



GROUP 3

31 Draycott Avenue | | LONDON | SW3 3BS

£2,550 Per month

ESON2
REAL ESTATE

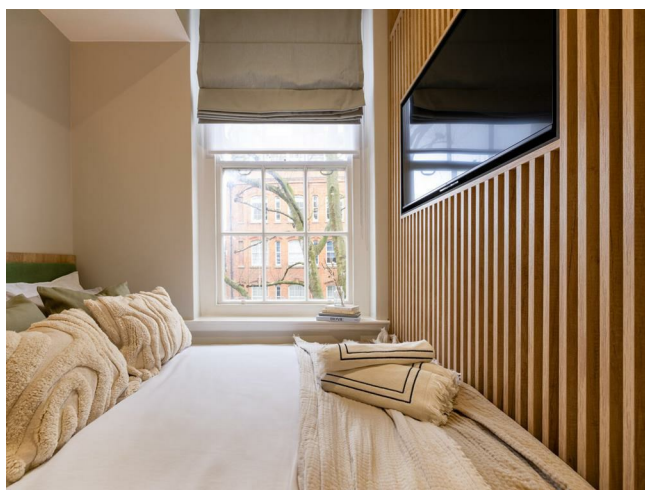
Key features

- Open-Plan Living
- High-End Kitchen
- Luxurious Bathroom
- Smart Design
- On-site Gym
- Workspace Facilities
- 24/7 Security

Description

A newly renovated studio in Chelsea SW3 featuring a sleek, space-efficient layout, modern kitchen with premium appliances, and stylish bathroom. Includes built-in storage, dining and study areas, 24/7 gym access, co-working spaces, secure entry, and CCTV. Prime location near King's Road, Knightsbridge, and luxury shopping—ideal for professionals or students.

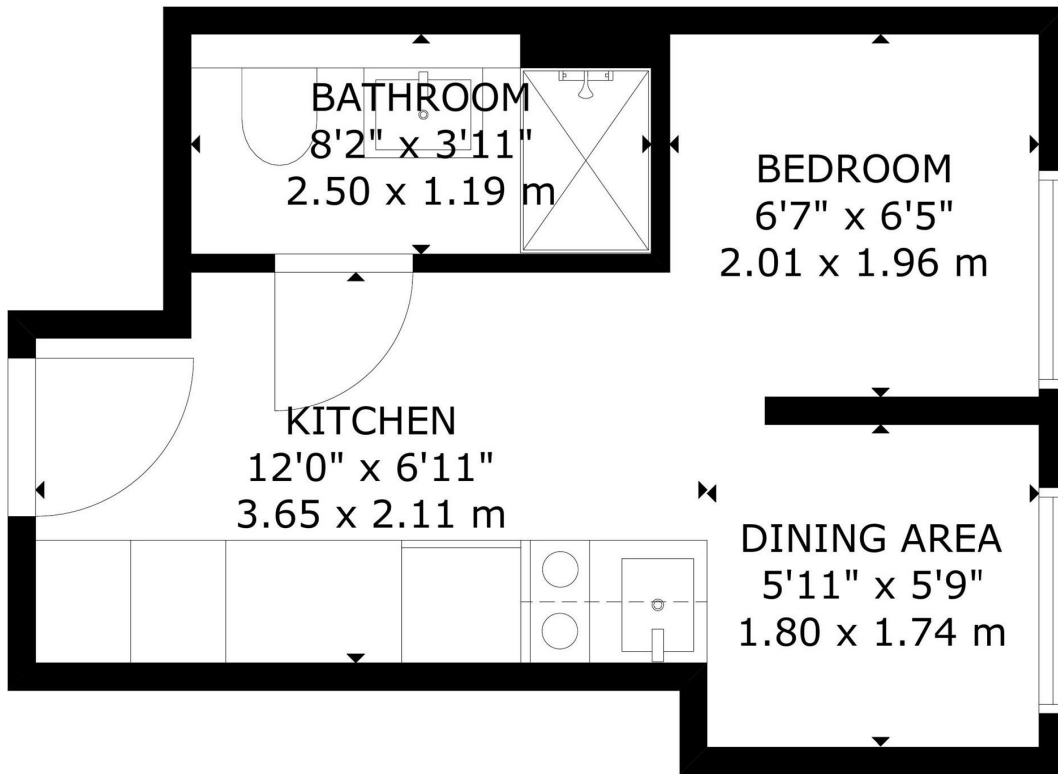
Directions



A bright, newly refurbished studio in Chelsea SW3, combining contemporary design with practical, city-ready living. The open-plan layout maximises natural light, with a large window by the bed creating a welcoming and airy space.

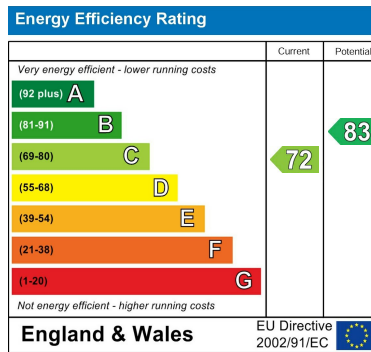


Floor plans



GROSS INTERNAL AREA
 TOTAL: 18 m²/193 sq ft
 THIRD FLOOR: 18 m²/193 sq ft
 SIZE AND DIMENSIONS ARE APPROXIMATE, ACTUAL MAY VARY

THIRD FLOOR



Council Tax Band New Build EPC Rating C



301 Michelin House 81 Fulham road
 London
 Greater London
 SW3 6RD
 07920 257649
 fayeel@eson2.co.uk
 www.eson2.co.uk