

## Herons Lea, N6

£700,000

In a small and select block with large communal gardens, a beautifully presented two bedroom flat with a large lounge, two balconies along with a newly fitted kitchen and bathroom.

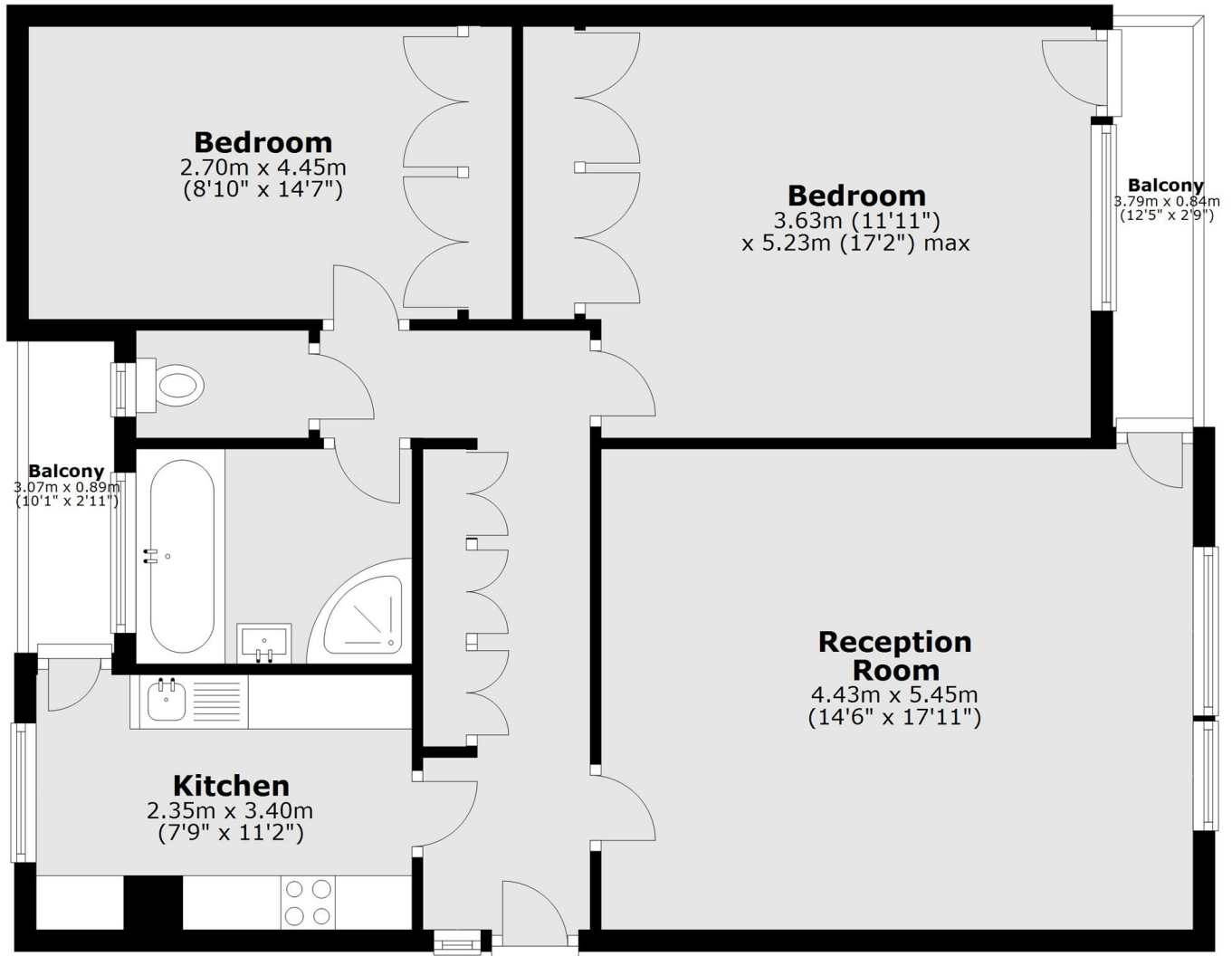
Located on this highly respected and quiet tree-lined avenue, Herons Lea is situated between the local tube stations and has Hampstead Heath at the top of the road.

### Features

- Two Bedrooms
- New Kitchen
- New Bathroom
- Two Balconies
- Off-Street Parking
- External Storage

# Herons Lea, London, N6

## First Floor



Main area: Approx. 81.7 sq. metres (879.7 sq. feet)  
Plus balconies, approx. 5.9 sq. metres (63.7 sq. feet)