



## THORNTON AVENUE, W4

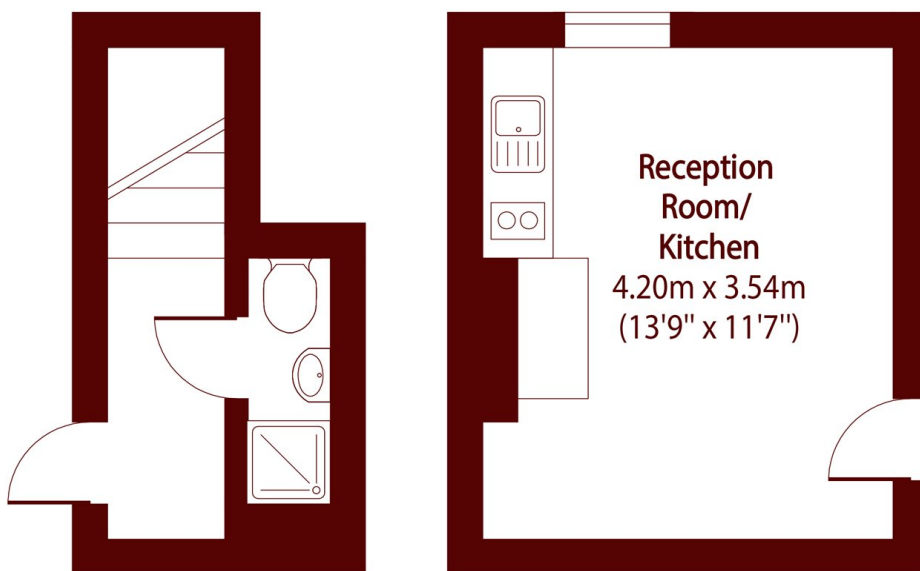
£1,300 PCM

A recently refurbished studio, located on one of Chiswick's prime location, with a one minute walk to Turnham Green Terrace and all of it's amenities.

Studio room  
Separate bathroom  
Furnished

Communal gardens  
Some bills included  
Energy rating: d

# STEP INSIDE THORNTON AVENUE



Communal Bathroom &  
First Floor Entrance

Second Floor

Total area (approx): 14.70 sq m (158 sq. ft)

Chiswick  
020 8994 2556

Energy Rating: D We aim to make our particulars both accurate and reliable. However, they are not guaranteed; nor do they form part of an offer or contract. If you require clarification on any points then please contact us, especially if you're traveling some distance to view. Please note that appliances and heating systems have not been tested and therefore no warranties can be given as to their good working order

MARSH &  
PARSONS