



Curlew Gardens, Waterlooville PO8 9UD

welcome to

Curlew Gardens, Waterloooville

Spacious four bed end terrace with flexible living space, low maintenance garden, and ample street parking. Close to amenities, schools, and transport links. Three double bedrooms, one single, WC, family bathroom. No onward chain.

Hallway

Under stair storage. Doors to:

Cloakroom

Double glazed window to front aspect. Low level W/C. Wash basin.

Kitchen

Double glazed window to front aspect. Vinyl flooring. Wall and base units. Sink and drainer. Space for; Washing machine, oven and hob, fridge/freezer.

Dining Room

Double glazed sliding door to rear aspect. Vinyl flooring. Radiator.

Reception Room

Double glazed window to front aspect. Carpet. Radiator.

Reception Room

Double glazed window to rear aspect. Carpet. Radiator.

Bedroom One

Double glazed window to front aspect. Carpet. Radiator.

Bedroom Two

Double glazed window to front aspect. Carpet. Radiator.

Bedroom Three

Double glazed window to rear aspect. Carpet. Radiator.

Bedroom Four

Double glazed window to rear aspect. Carpet. Radiator.

Family Bathroom

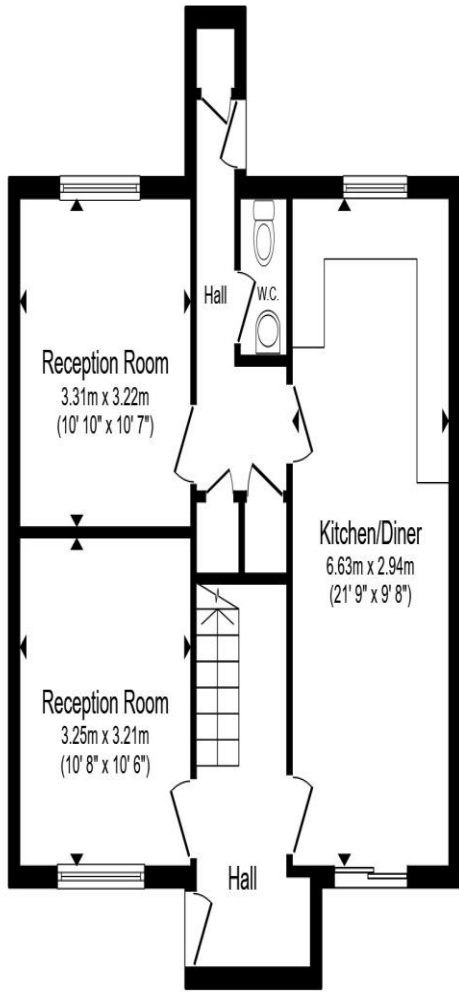
Vinyl flooring. Double glazed window to rear aspect. Bath. Low level W/C. Wash basin.

Rear Garden

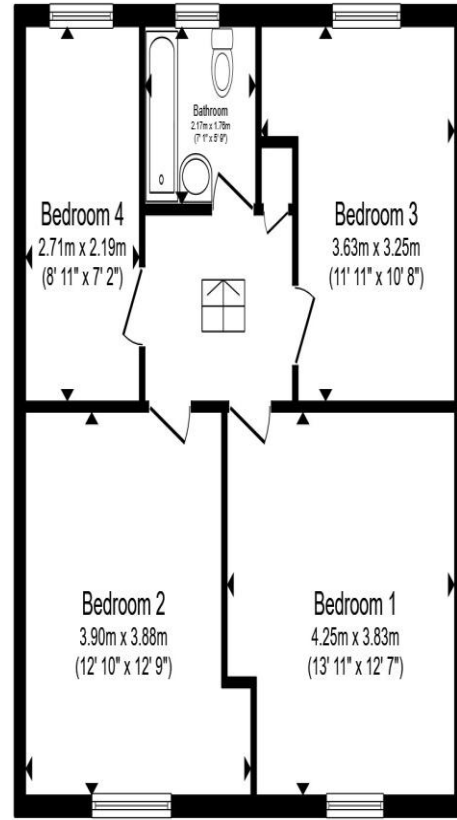
Fenced rear garden. Rear pedestrian access. Pato. Shrub border.

Front Garden

Walled front garden. Lawn. Shrub border.



Ground Floor



First Floor

Total floor area 117.6 m² (1,266 sq.ft.) approx

This floor plan is for illustrative purposes only. It is not drawn to scale. Any measurements, floor areas (including any total floor area), openings and orientation are approximate. No details are guaranteed, they cannot be relied upon for any purpose and they do not form part of any agreement. No liability is taken for any error, omission or misstatement. A party must rely upon its own inspection(s). Powered by www.propertybox.io



welcome to

Curlew Gardens, Waterlooville

- No Forward Chain!
- Four Bed End Terrace
- Spacious Lounge
- Kitchen / Diner
- Three Double Bedrooms

Tenure: Freehold EPC Rating: D

Council Tax Band: C

guide price

£280,000



view this property online fox-and-sons.co.uk/Property/WLV109570



Property Ref:
WLV109570 - 0005

1. MONEY LAUNDERING REGULATIONS Intending purchasers will be asked to produce identification documentation at a later stage and we would ask for your co-operation in order that there is no delay in agreeing the sale. 2. These particulars do not constitute part or all of an offer or contract. 3. The measurements indicated are supplied for guidance only and as such must be considered incorrect. Potential buyers are advised to recheck measurements before committing to any expense. 4. We have not tested any apparatus, equipment, fixtures or services and it is in the buyers interest to check the working condition of any appliances. 5. Where an EPC, or a Home Report (Scotland only) is held for this property, it is available for inspection at the branch by appointment. If you require a printed version of a Home Report, you will need to pay a reasonable production charge reflecting printing and other costs. 6. We are not able to offer an opinion either written or verbal on the content of these reports and this must be obtained from your legal representative. 7. Whilst we take care in preparing these reports, a buyer should ensure that his/her legal representative confirms as soon as possible all matters relating to title including the extent and boundaries of the property and other important matters before exchange of contracts.

Fox & Sons is a trading name of Sequence (UK) Limited which is registered in England and Wales under company number 4268443, Registered Office is Cumbria House, 16-20 Hockliffe Street, Leighton Buzzard, Bedfordshire, LU7 1GN. VAT Registration Number is 500 2481 05.

fox & sons



023 9226 2447



Waterlooville@fox-and-sons.co.uk



81B London Road, WATERLOOVILLE,
Hampshire, PO7 7ES



fox-and-sons.co.uk