



DOVECOTE SOUTHEND-ON-SEA

£1,000 PER MONTH

Available to let is this well-presented one-bedroom first floor flat situated in a quiet residential cul-de-sac in Shoeburyness. The property offers a bright and spacious living area, a modern fitted kitchen, one double bedroom and a contemporary bathroom, making it an ideal home for a single professional or couple. The flat is neutrally decorated throughout and benefits from ample natural light.

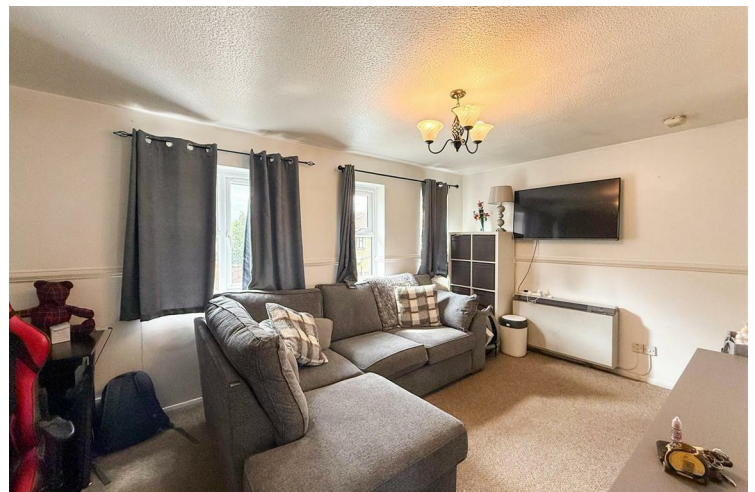


- One Double Bedroom • Garage • One Off Street Parking Space • Double Glazed Throughout • External Storage

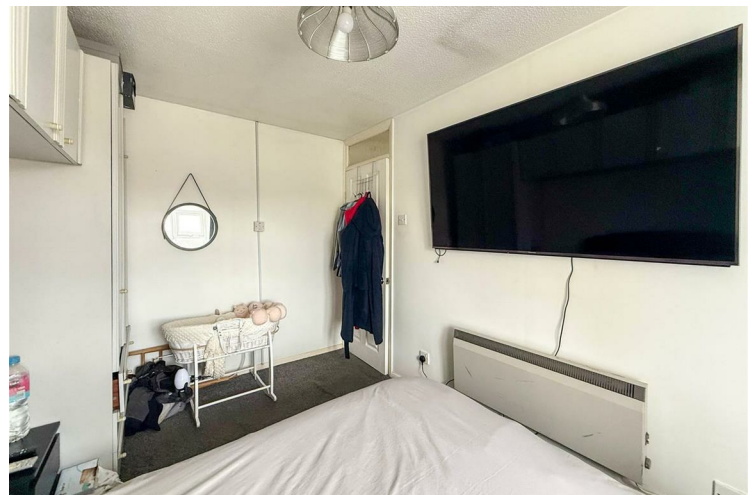
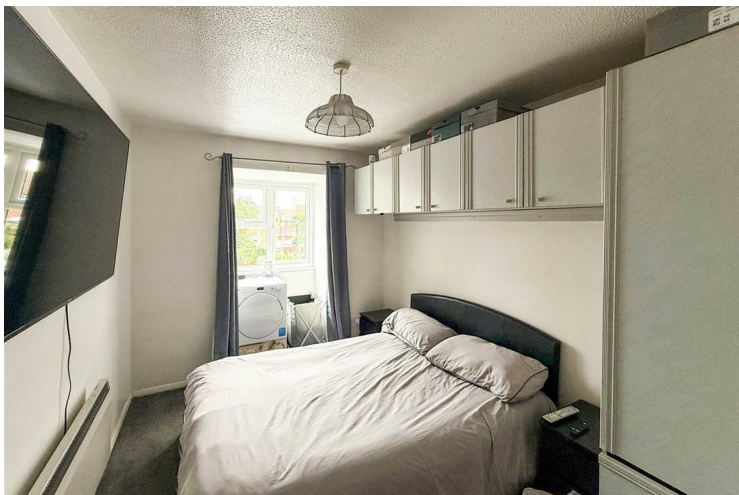
In addition to the internal space, the property also boasts a private garage, an allocated parking space, and further outside storage – providing convenient and secure options for vehicles, bikes or seasonal belongings. Located within easy reach of local shops, seafront attractions and Shoeburyness train station, this home offers both comfort and excellent connectivity.

The property falls within council tax band A, offering one of the most affordable rates in the area, and holds an EPC rating of D, ensuring good energy efficiency. A five-week security deposit will be required prior to the start of the tenancy.

The property is available immediately and early viewing is strongly recommended to avoid disappointment.



- Close to Amenities • Working Tenants • Non-Smokers • Pets Considered • Available mid July








Additional Information

Local Authority -
Council Tax - Band A
Viewings - By
Appointment Only

Floor Area - sq ft
Tenure -



Energy Efficiency Rating		
	Current	Potential
<i>Very energy efficient - lower running costs</i>		
(92 plus) A		
(81-91) B		
(69-80) C		
(55-68) D	57	72
(39-54) E		
(21-38) F		
(1-20) G		
<i>Not energy efficient - higher running costs</i>		
England & Wales	EU Directive 2002/91/EC 	

Agents Note: Whilst every care has been taken to prepare these particulars, they are for guidance purposes only. All measurements are approximate and are for general guidance purposes only and whilst every care has been taken to ensure their accuracy, they should not be relied upon and potential buyers/tenants are advised to recheck the measurements

RP & C Estate Agents
 15 Nelson Street
 Southend On Sea
 SS1 1EF

01702 844984
 info@rpcestateagents.co.uk
 www.rpcestateagents.co.uk

