



GEORGE STREET, W1H

£315,000

Studio
Meticulously finished
Naturally lit
Murphy bed
Modern kitchen
24 hour porter

@marshandparsons
marshandparsons.co.uk

MARSH &
PARSONS

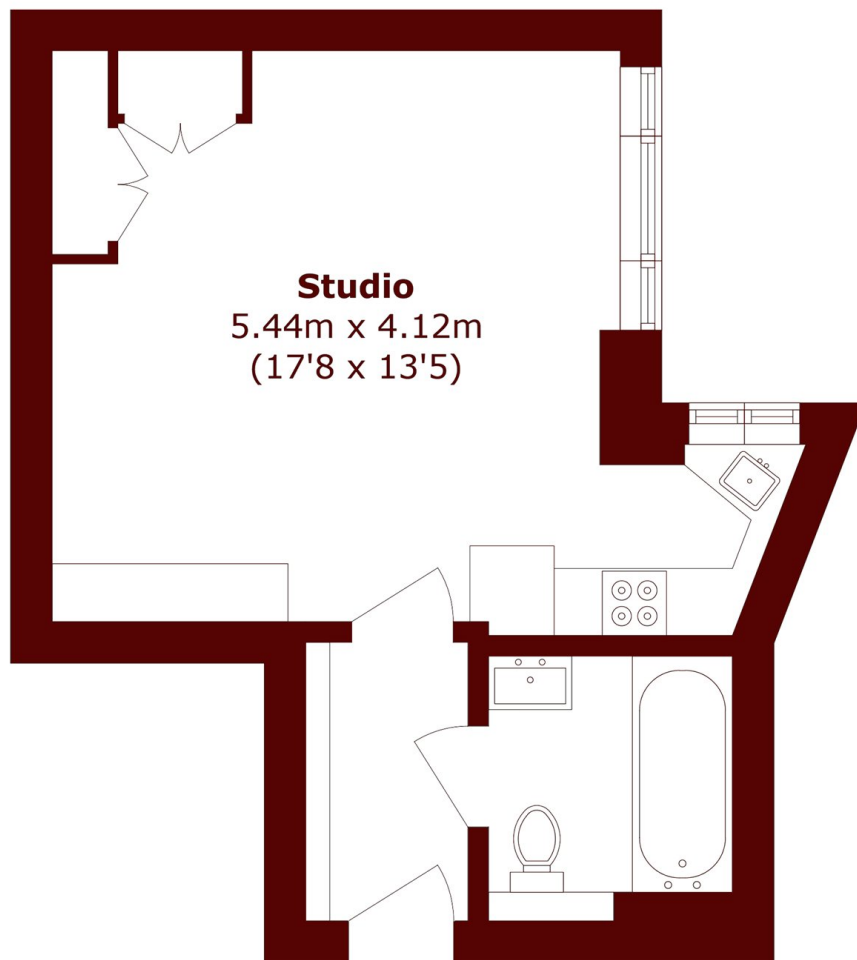


ABOUT THE PROPERTY

This beautifully presented studio flat has been meticulously finished throughout, offering a perfect blend of modern style, comfort, and intelligent design. The property features a bright open-plan living space with high-quality finishes, a fully fitted contemporary kitchen with integrated appliances, and a sleek, modern bathroom. A bespoke Murphy bed cleverly folds away to maximise floor space, seamlessly transforming the room from a comfortable sleeping area into a stylish living and entertaining space. With its neutral décor, efficient layout, and attention to detail, this property provides an ideal low-maintenance home for first-time buyers, professionals, or investors alike.



STEP INSIDE GEORGE STREET



Total area (approx.): 24.9 sq. m (268.0 sq. ft)

Marylebone & Mayfair
020 7935 1775

Energy Rating: E We aim to make our particulars both accurate and reliable. However, they are not guaranteed; nor do they form part of an offer or contract. If you require clarification on any points then please contact us, especially if you're traveling some distance to view. Please note that appliances and heating systems have not been tested and therefore no warranties can be given as to their good working order

**MARSH &
PARSONS**