



Connells

Robin Hill
Bedford



Property Description

Occupying a delightful position overlooking a picturesque green in the highly sought-after northern part of Bedford, this extended three-bedroom semi-detached home has been beautifully maintained throughout and offers spacious, versatile accommodation ideal for modern family living.

Upon entering the property, you are welcomed by a bright and inviting entrance hall, which provides access to a convenient downstairs cloakroom/WC. The generous living room offers a comfortable space to relax, while the separate dining room enjoys patio doors opening directly onto the beautifully maintained rear garden, creating the perfect setting for entertaining and family gatherings.

To the rear of the property, the well-appointed kitchen is complemented by a separate utility room, providing additional storage and practicality.

The first floor comprises three well-proportioned bedrooms, all presented to an exceptional standard, together with a modern family bathroom.

Externally, the property continues to impress with a private, low-maintenance rear garden featuring a patio area, ideal for outdoor dining and enjoying the warmer months. To the front, there is ample off-road parking for multiple vehicles.



Ground Floor

Entrance Hall

Cloakroom

Lounge

Dining Room

Kitchen

Utility Room

First Floor

Landing

Bedroom One

Bedroom Two

Bedroom Three

Bathroom

External

Rear Garden

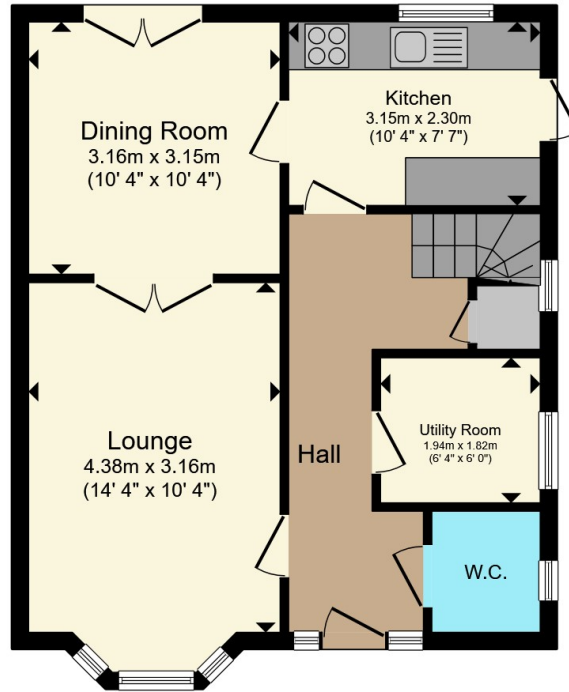
Summer House

Parking

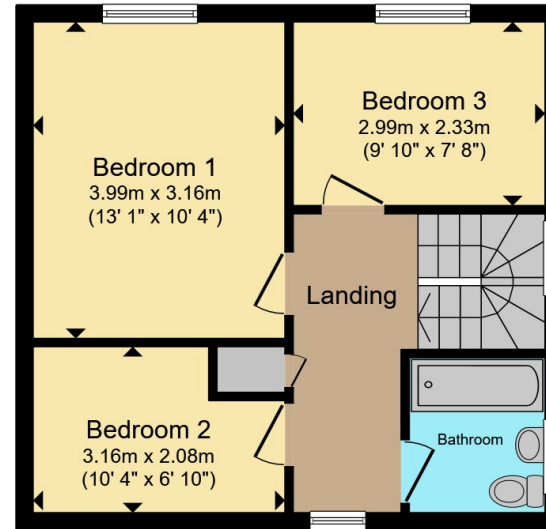








Ground Floor



First Floor

Total floor area 89.0 m² (958 sq.ft.) approx

This floor plan is for illustrative purposes only. It is not drawn to scale. Any measurements, floor areas (including any total floor area), openings and orientation are approximate. No details are guaranteed, they cannot be relied upon for any purpose and they do not form part of any agreement. No liability is taken for any error, omission or misstatement. A party must rely upon its own inspection(s). Powered by www.propertybox.io



To view this property please contact Connells on

T 01234 345 303
E bedford@connells.co.uk

42 Allhallows
 BEDFORD MK40 1LN

EPC Rating: C Council Tax
 Band: C

Tenure: Freehold

view this property online connells.co.uk/Property/BED309085



1. MONEY LAUNDERING REGULATIONS Intending purchasers will be asked to produce identification documentation at a later stage and we would ask for your co-operation in order that there will be no delay in agreeing the sale. 2. These particulars do not constitute part or all of an offer or contract. 3. The measurements indicated are supplied for guidance only and as such must be considered incorrect. Potential buyers are advised to recheck measurements before committing to any expense. 4. We have not tested any apparatus, equipment, fixtures, fittings or services and it is in the buyers interest to check the working condition of any appliances.

Connells Residential is registered in England and Wales under company number 1489613, Registered Office is Cumbria House, 16-20 Hockliffe Street, Leighton Buzzard, Bedfordshire, LU7 1GN. VAT Registration Number is 500 2481 05.

See all our properties at www.connells.co.uk | www.rightmove.co.uk | www.zoopla.co.uk

Property Ref: BED309085 - 0002