



- A smart and well presented two bedroom cottage
- Cosy lounge with an attractive fitted burner
- Nicely fitted kitchen with a selection of integrated appliances
- Enclosed garden with riverside BBQ area
- Allocated parking for two vehicles to the front
- Super convenient location for the town, schools and countryside walks



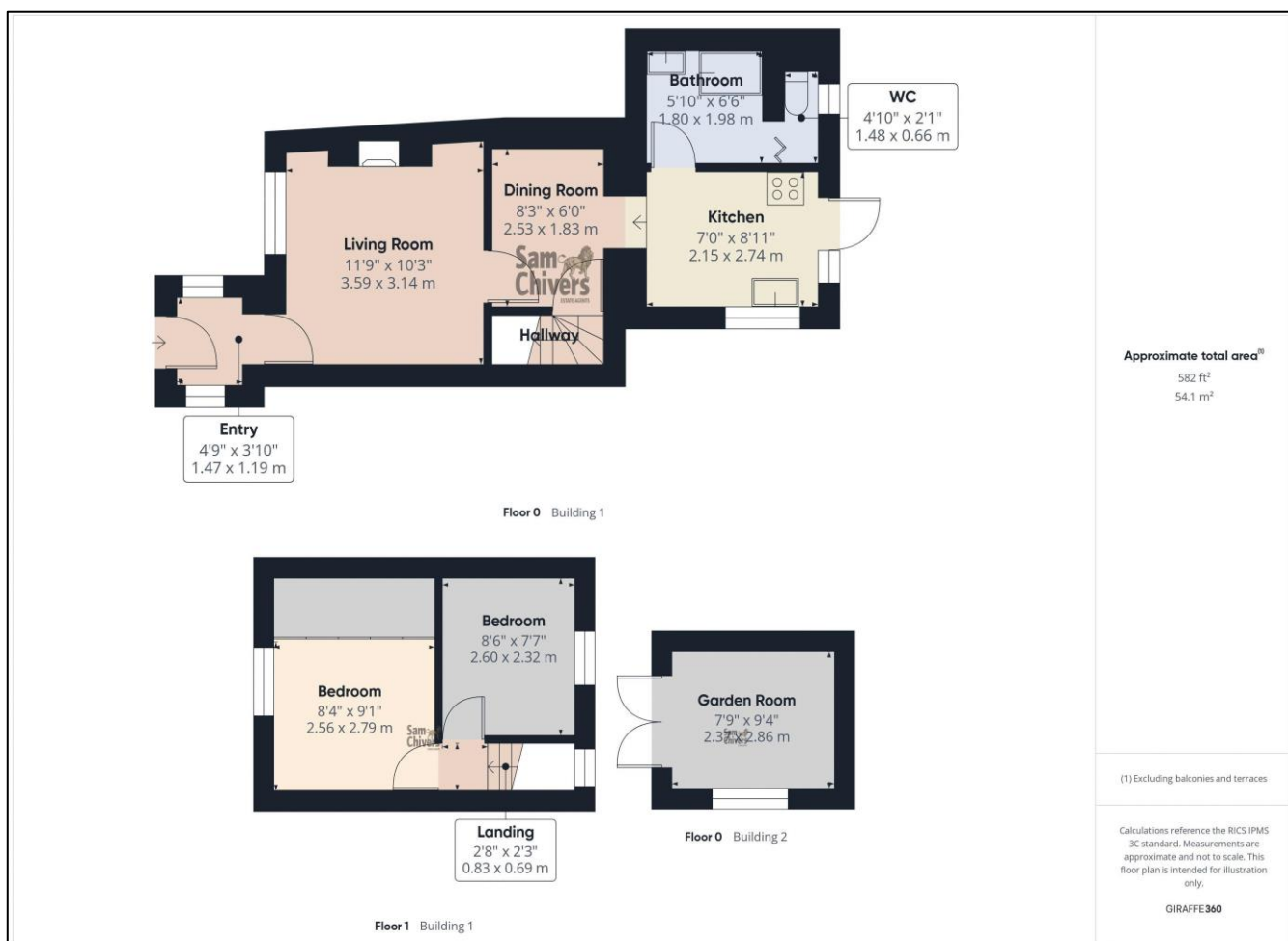
***'A pretty, end of terrace cottage that is packed with charm and has a lovely finish throughout and has both the town and local schools within easy level walking distance!'***

Quietly tucked away at the end of a terrace of just 4 cottages, lies this beautifully presented two bedroom home that could be moved into with the minimum of fuss! The property enjoys well proportioned accommodation comprising an entrance porch that is perfect shoes, boots and coats and this leads into a cosy lounge with tiled floor and a lovely multi-fuel burner in keeping with the style of the property. The property has a dining area with stairs to the first floor and this connects into an attractive, well fitted kitchen with a range of integrated appliances and doors to the rear garden. The bathroom is also located on the ground floor. On the first floor there are two comfortable bedrooms with the main bedroom having been finished with well fitted wardrobes for excellent storage. The property has gas central heating, has had new windows in 2017 and has had a refurbished roof in 2020.

Externally the property has parking for two cars side by side at the front as well as a riverside BBQ area. At the rear there is an enclosed garden which is low maintenance and has had a large summerhouse/cabin added to act as a craft room with power and lighting and could well be utilised as an office. Artificial turf and there is a large timber shed.

Redfield Road is a really convenient location being just a five minute level walk into the town centre where there are a good variety of shops, services and schools and there is access close by to countryside walks via the nearby bridleway. Regular public transport is located on the doorstep. Bath city centre is eleven miles and Bristol city centre is fourteen miles.





Find us online!



[www.samchiversproperty.co.uk](http://www.samchiversproperty.co.uk)



Facebook: Sam Chivers Estate Agents



Instagram: @samchiversestateagents

**rightmove**  **Zoopla**

Score	Energy rating	Current	Potential
92+	A		
81-91	B		85 B
69-80	C		
55-68	D	61 D	
39-54	E		
21-38	F		
1-20	G		

Sam Chivers Estate Agents can also provide mortgage and conveyancing recommendations should you require such a service. Please contact our office on:

01761 411020 or email us at [sales@samchiversproperty.co.uk](mailto:sales@samchiversproperty.co.uk)

These sales particulars provide an approximate guide and form no part of a contract. It is the purchaser's responsibility to satisfy themselves that the property has been accurately described and that all fixtures and apparatus are functioning correctly. Your home may be at risk if you do not keep up repayments secured against it.