



Times Square, E1

£2,350 Per calendar month

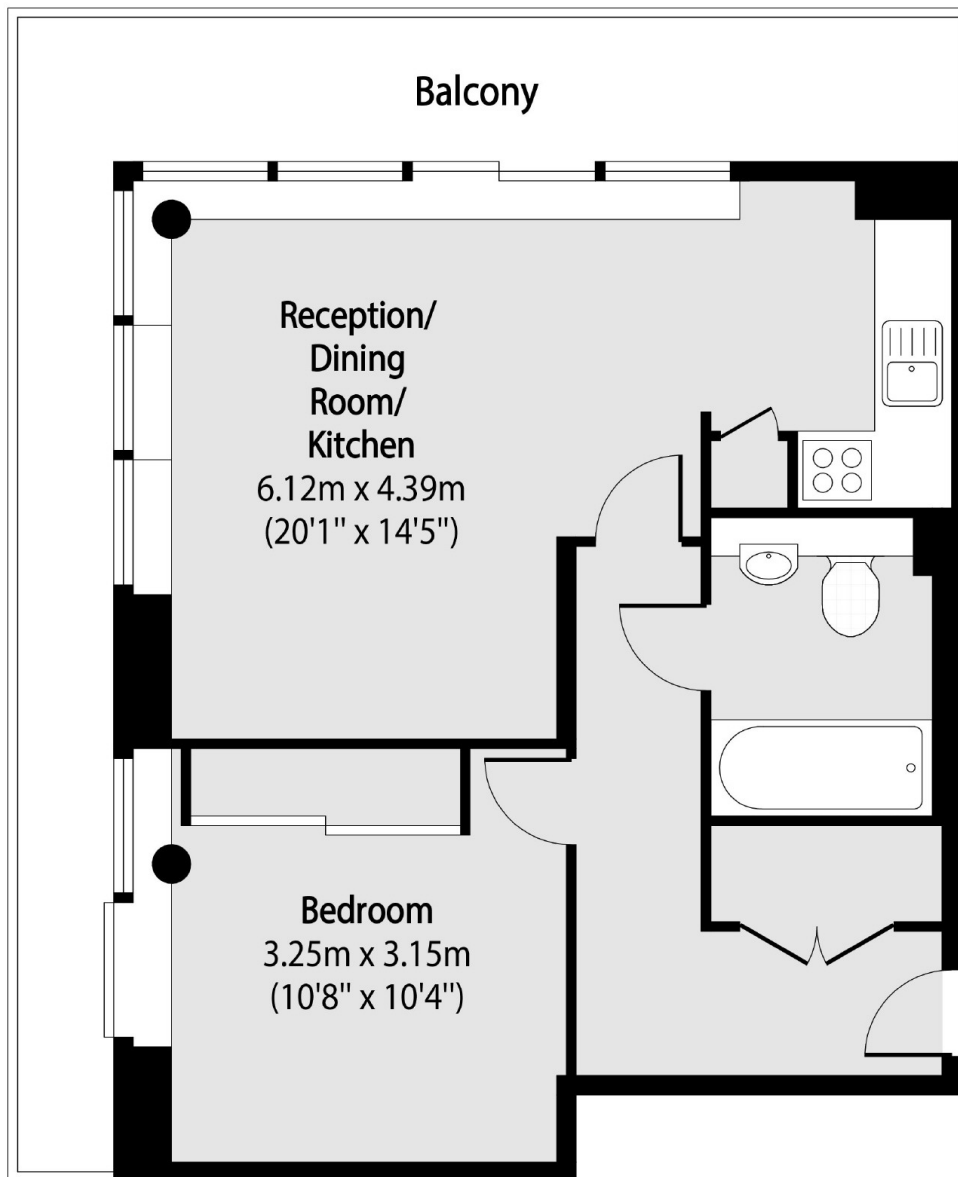
A one double bedroom apartment is based in the popular Time Square development in the heart of the City. The property has great natural light with floor to ceiling windows and a private wrap around balcony. An ideal property for a single Tenant or professional couple.

Hooper Street is situated between Spitalfields and St Katharine Docks, which is an ideal place to be when it comes to looking for the best restaurants, bars and cafés in the area.

Features

- One Double Bedroom
- Top Floor
- Lift Access
- 24 Hour Concierge
- Private Balcony
- Heart of the City

Times Square, London, E1



Total area (approx): 47.38 sq m (510 sq. ft)

Balcony total area (approx): 14.68 sq m (158 sq. ft)