



Montague Road, W7

£685,000

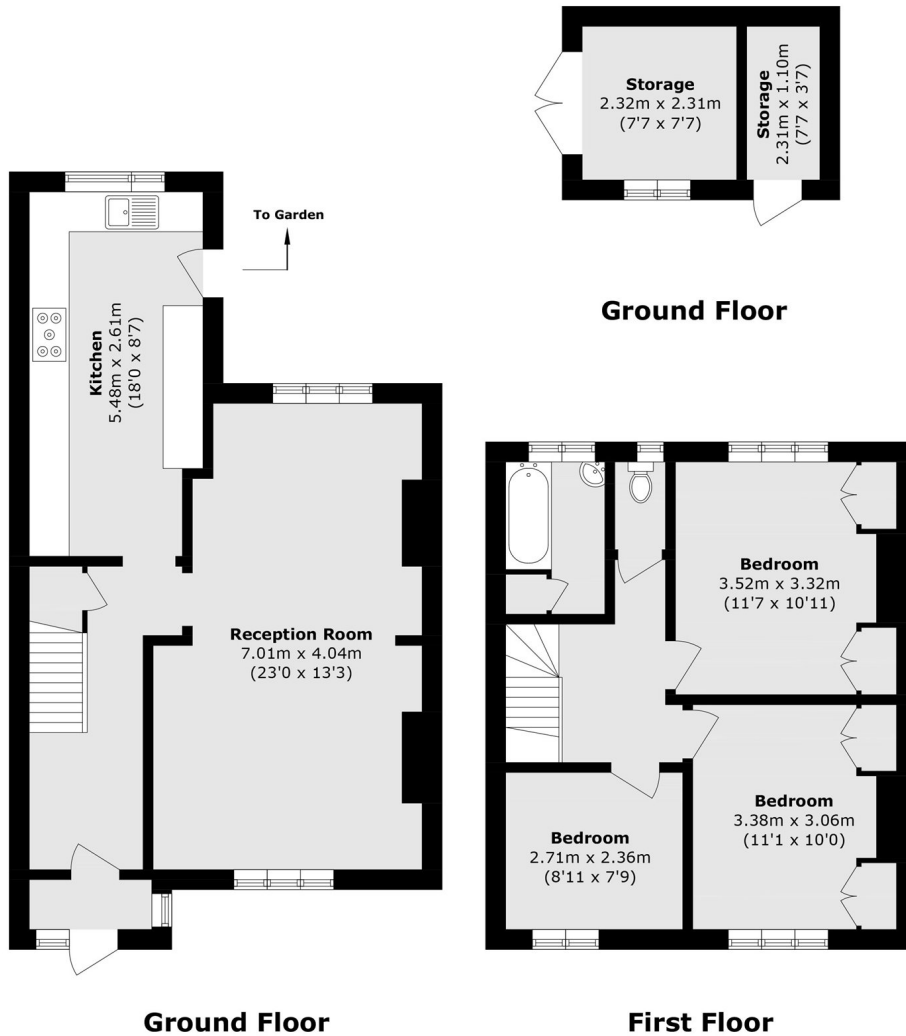
A well-presented three bedroom mid-terraced home offering comfortable living space throughout. The property has a large through lounge with a bright dining area. The well fitted modern kitchen opens out to the west facing garden which has a patio area and a versatile outhouse. Attractive shutters feature in most rooms and there is also potential to further extend the property (STPP).



Located close to Hanwell Broadway, the local amenities and transport links available on Boston Road and within catchment of St.Marks and Oaklands primary schools and Elthorne Park high school. Hanwell (Elizabeth line) and Boston Manor (Piccadilly line) stations are just over half a mile away.

- Three Bedrooms • Mid-Terraced • West Facing Garden •
- Outhouse • Potential To Extend (STPP) • Elizabeth Line •





Total area (approx.): 92.5 sq. m (995.6 sq. ft)
Outbuilding area (approx.): 8.2 sq. m (88.2 sq. ft)

Robertson Smith & Kempson Hanwell Sales
69 Greenford Avenue, London,
W7 1LL
020 8566 2339
hanwellsales@robertsonsmithandkempson.co.uk

Energy Rating: C. We aim to make our particulars both accurate and reliable. However they are not guaranteed; nor do they form part of an offer or contract. If you require clarification on any points then please contact us, especially if you're traveling some distance to view. Please note that appliances and heating systems have not been tested and therefore no warranties can be given as to their good working order.