



Lant Street, SE1

£475,000

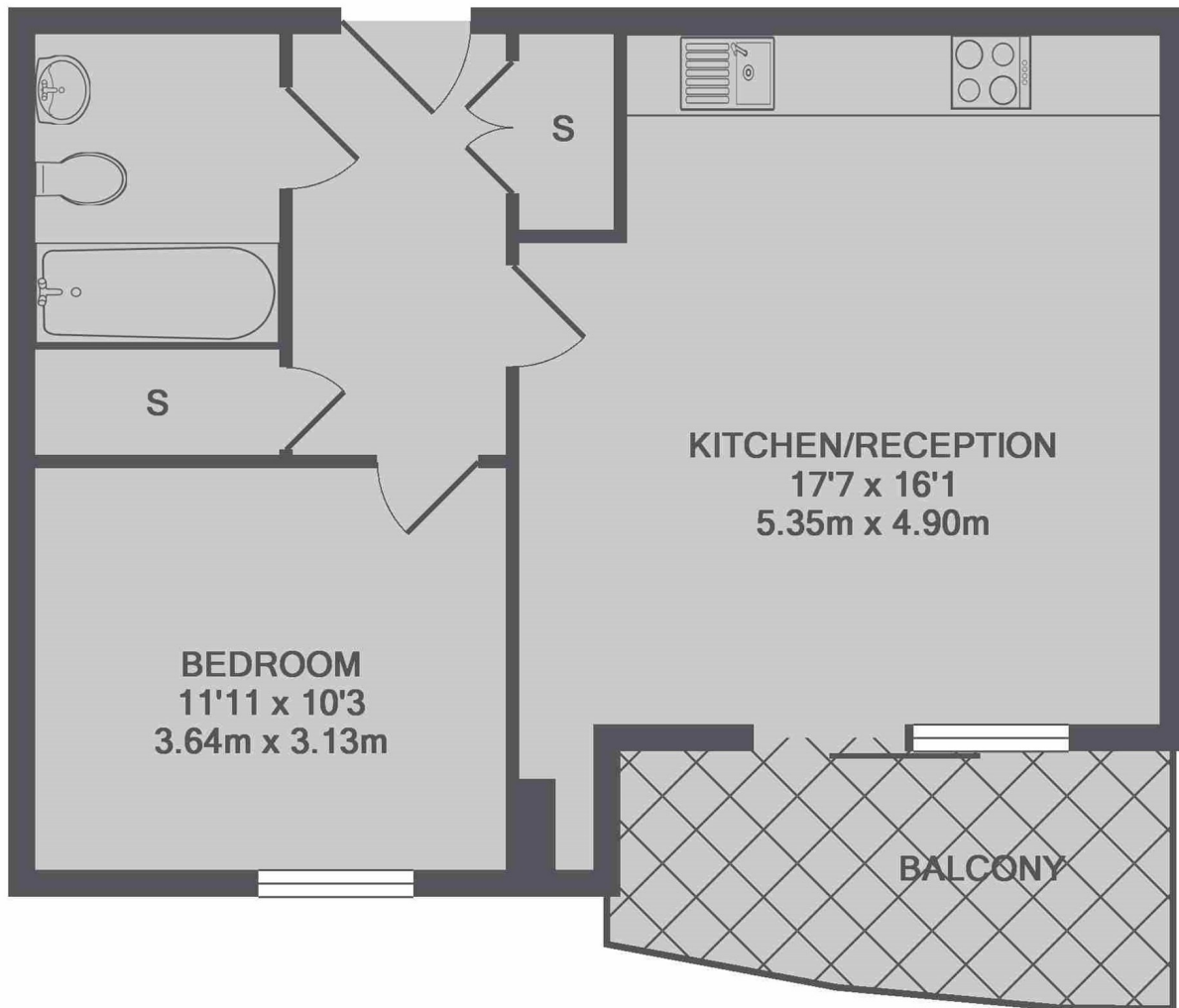
A contemporary one-bedroom apartment set within a secure gated development. The property features a bright open-plan kitchen and living area with access to a private balcony, a well-proportioned double bedroom, a stylish three-piece bathroom, and the added convenience of a separate storage and laundry room. Offers in excess of £475,000.

Perfectly located in the heart of SE1, Lant Street enjoys excellent transport links with Borough Underground Station just moments away, plus with London Bridge, Southwark and Elephant & Castel all nearby. The South Bank, Borough Market and Tate Modern are all within easy reach, placing some of London's most iconic landmarks right on your doorstep.

Features

- One Bedroom Apartment
- Modern Development
- Open Plan Living Space
- Lift Access & Secure Entry
- Private Balcony
- Excellent Transport Links
- Offers in Excess of £475,000

Lant Street, London, SE1



TOTAL APPROX. FLOOR AREA 540 SQ.FT. (50.1 SQ.M.)