



JEROEN HOPPE

exp[®] UK

@jeroen.hoppe@exp.uk.com

🌐 jeroenhoppe@exp.uk.com

☎ 07837 093 554

Bakery Close, Oval/Stockwell SW9

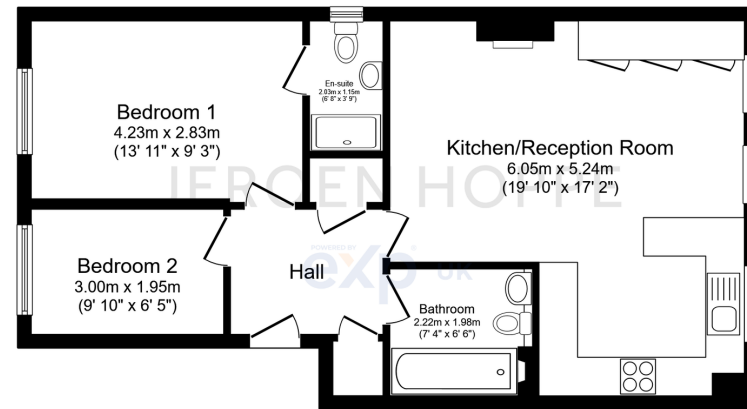
Guide Price £500,000-£550,000

🛏️ 2 🚿 2 🚻 1



- Share of Freehold
- Chain Free
- Top Floor
- 2 Bed, 2 Bath
- Allocated Off Street Gated Parking
- Gated Development
- Oval/Stockwell Tube
- Quote JH0676





Floor Plan
 Floor area 60.3 sq.m. (649 sq.ft.)

Total floor area: 60.3 sq.m. (649 sq.ft.)

This floor plan is for illustrative purposes only. It is not drawn to scale. Any measurements, floor areas (including any total floor area), openings and orientations are approximate. No details are guaranteed, they cannot be relied upon for any purpose and do not form any part of any agreement. No liability is taken for any error, omission or misstatement. A party must rely upon its own inspection(s). Powered by www.Propertybox.io

JEROEN HOPPE
 exp UK

Secure Gated Development with Allocated Parking- 2bed 2bath -
 Top Floor with Loft Access for Storage - Communal Gardens -
 Chain Free

