



Apartment (EPC Rating:)

**FLAT 4 GLOUCESTER HOUSE, DYER STREET,
CIRENCESTER, GLOUCESTERSHIRE, GL7 2PF
PCM**

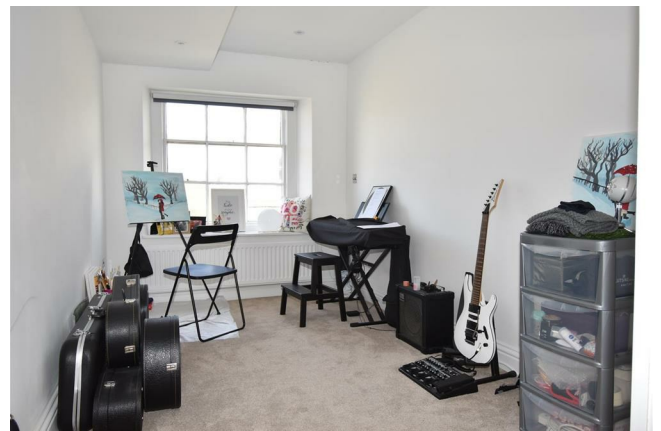
£1,250 PCM

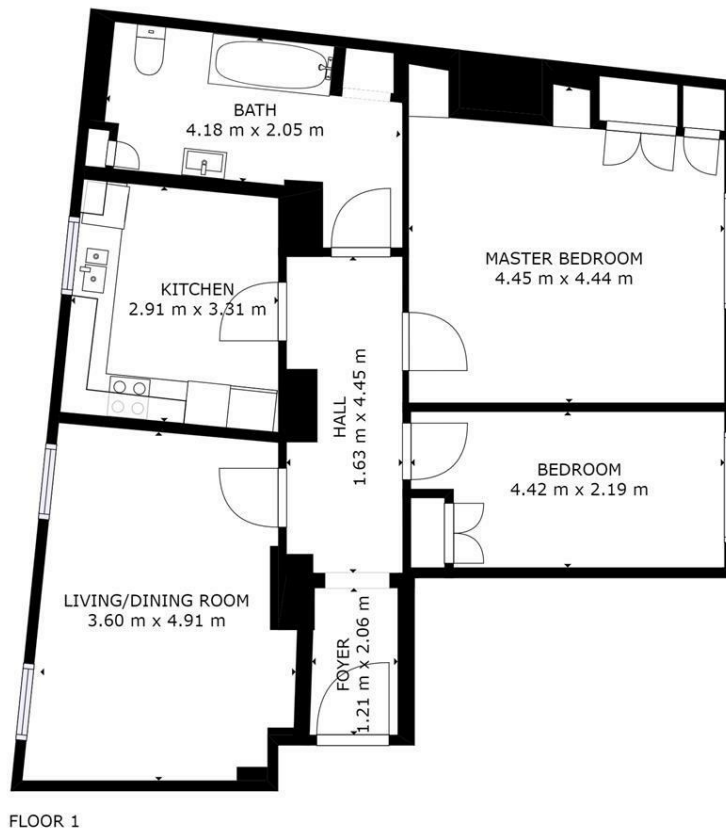
CANNON ESTATES
SALES & LETTINGS



2 Bedroom Apartment located in Cirencester

Cannon Estates are proud to present this spacious, two bedroom luxury apartment, in the heart of Cirencester Town Centre. Located within a Grade II Listed building with lift. Comprising of entrance hall, spacious living room, modern kitchen featuring a full range of new appliances, two double bedrooms and a contemporary bathroom. This luxury apartment is finished to a high standard throughout and available March.





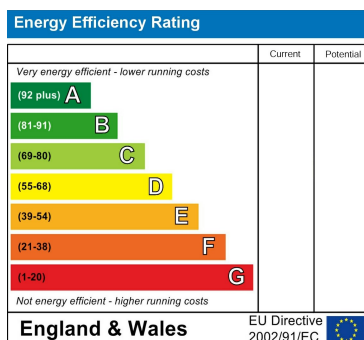
GROSS INTERNAL AREA
FLOOR 1: 79 m²
TOTAL: 79 m²
SIZES AND DIMENSIONS ARE APPROXIMATE, ACTUAL MAY VARY.



Council Tax Band

B

Energy Performance Graph



Call us on

01285 706900

info@cannon-estates.co.uk

<https://www.cannon-estates.co.uk/>

Agents Note: Whilst every care has been taken to prepare these particulars, they are for guidance purposes only. All measurements are approximate and are for general guidance purposes only and whilst every care has been taken to ensure their accuracy, they should not be relied upon and potential buyers are advised to recheck the measurements.

CANNON ESTATES
SALES & LETTINGS