

**2 Bed
Apartment
located in**

AiHOMES.

Modern 2B2B Apartment | Victoria Residence | Manchester M15 | 478150VR



£385,000

AiHOMES is delighted to present this exquisite 2-bedroom apartment located on the 13th floor of the prestigious Victoria Residence, part of the exclusive Crown Street development. This remarkable property spans 73 square feet and offers an unparalleled living experience, characterised by elegance and comfort, alongside breathtaking views of Manchester's skyline.

As you enter, you are welcomed by a modern open-plan layout that creates a bright and airy atmosphere. The floor-to-ceiling windows allow natural light to flood the interiors, enhancing the sense of space and warmth. The stylish kitchen is fully equipped with premium appliances, including an integrated oven, induction hob, refrigerator, and dishwasher, making it ideal for both entertaining guests and everyday cooking.

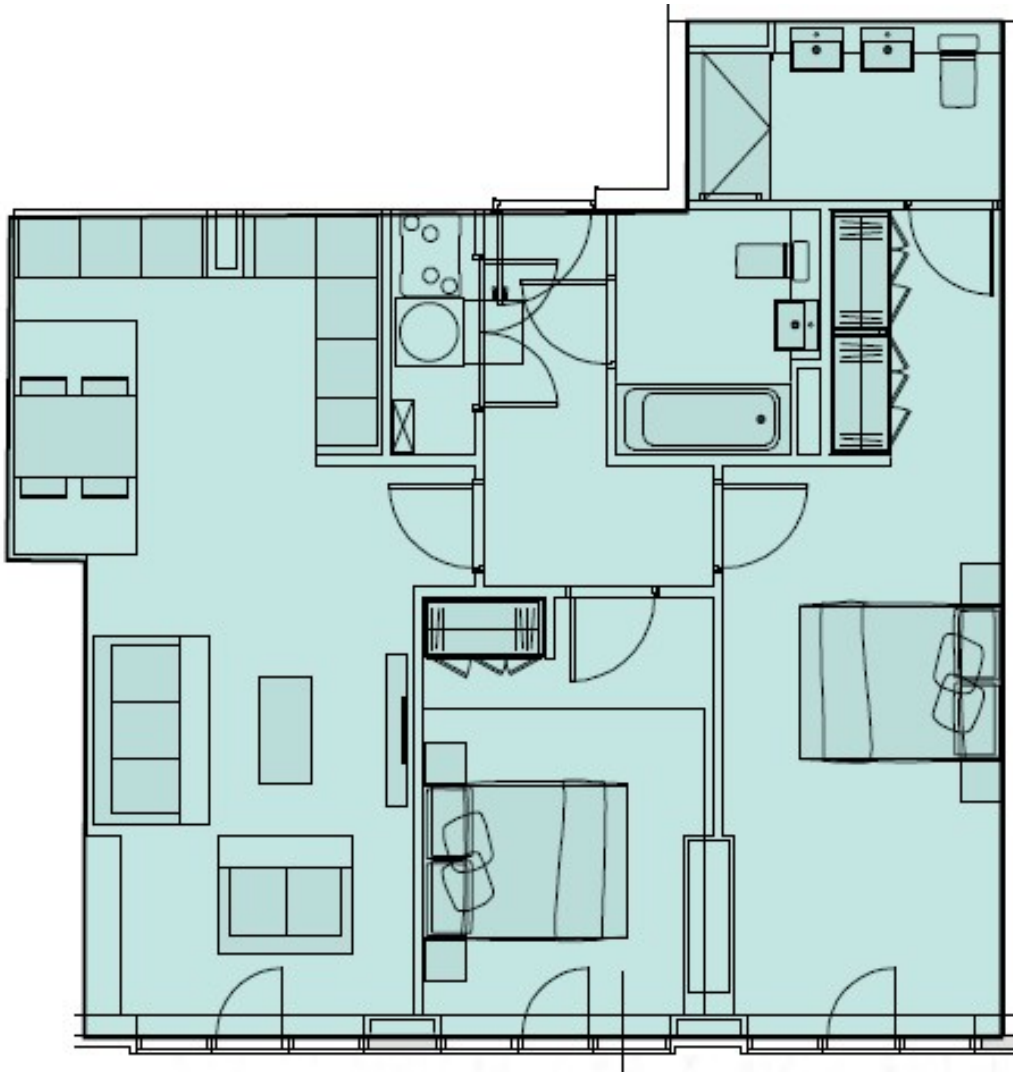
The apartment features two spacious bedrooms, each adorned with plush carpeting and ample storage, ensuring a restful retreat with stunning city views. The contemporary bathrooms are elegantly finished with premium tiles and sleek fittings, combining style with comfort for your daily routines.

One of the standout features of this property is the unmatched city views, which can be enjoyed from your elevated vantage point. Additionally, residents have access to world-class amenities, including one of Europe's exclusive high-rise swimming pools, providing a serene retreat, and a state-of-the-art fitness centre equipped with top-tier equipment to help you achieve your wellness.





**Modern 2B2B Apartment | Victoria Residence |
Manchester M15 | 478150VP**



Energy Efficiency Rating		
	Current	Potential
<i>Very energy efficient - lower running costs</i>		
(92 plus) A		
(81-91) B		
(69-80) C		
(55-68) D		
(39-54) E		
(21-38) F		
(1-20) G		
<i>Not energy efficient - higher running costs</i>		
England & Wales	EU Directive 2002/91/EC	

EPC Rating:
Council Tax Band: D

CONTACT

5th floor, Empress Business Center
380 Chester Road
Manchester
M16 9EA

E: info@aihomes.uk

T: 0127 332 8069

