



Tapestry Way, London E1

Price £545 per week - Furnished





Description

A stunning studio apartment situated on the 18th floor of Jacquard Point, part of the Silk District development, E1.

This luxury studio apartment offers great living space and is fully furnished to a high standard with window blinds installed. The apartment comprises an open plan living room and integrated kitchen, separate sleeping area with large fitted wardrobes, bathroom with porcelain finish, tiled flooring throughout, good storage space and balcony overlooking the East side of London and Canary Wharf.

The Silk District is a development from Mount Anvil and offers its residents fantastic amenities which include 24 hour concierge, on site gym, cinema room, rooftop gardens and resident's lounge. The development is within easy reach of the City of London and in the heart of the Whitechapel regeneration area, approximately 0.2 miles from Whitechapel Underground / Crossrail station which connects you to the Elizabeth line. Also close by you can find Queen Mary University of London (0.1 miles) and London Islamic School (0.2 miles).

We understand that cooling / heating is delivered via a communal system for which separate charges apply.

Rent is payable on a monthly basis and you may be required to pay more than a month's rent in advance, depending on your circumstances. You will be required to pay a 1 week holding deposit following a successful offer, and a five week deposit during the Tenancy. Utility bills, council tax, telephone line and broadband are not included in the rent. As well as paying the rent, you may also be required to make some additional permitted payments. If your tenancy does not qualify as an AST, additional fees may apply. Please visit jll.co.uk/fees for details of fees which may be payable when renting a property.

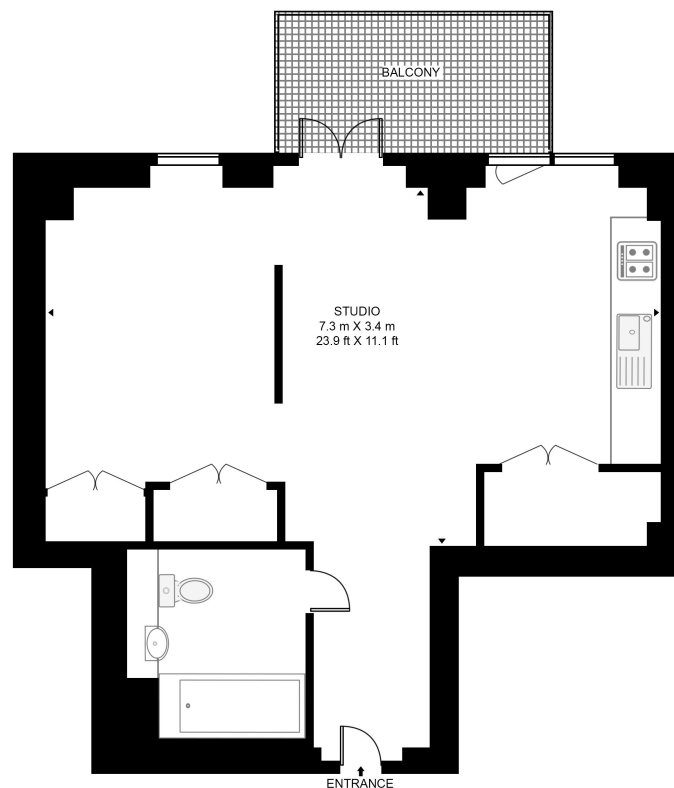
- | | |
|--|---|
| • Studio | 24 hour concierge |
| • 1 Bathroom | On-site leisure facilities including cinema and gym |
| • 18th Floor | 0.2 miles from Whitechapel Station |
| • Balcony overlooking the East side of London and Canary Wharf | Council Tax Band: D |
| • Rooftop gardens | Approx. 416 (38.7 sq m) |



Floorplan

416 sq ft | 39 sq m

JACQUARD POINT, THE SILK DISTRICT
APPROXIMATE GROSS INTERNAL FLOOR AREA 416 SQ.FT (38.7 SQ.M)



EIGHTEENTH FLOOR



This floor plan has been defined by the RICS Code of Measurement. This floor plan and all others are for approximate representative purposes only and upon usage is agreed to as such by the client.
WWW: hdvirtualart.com | TEL: 0203.974.1567 | EMAIL: info@hdvirtualart.com

City
25 Walbrook The Walbrook
Building,
London EC4N 8AF
+4420 7337 4000

Urban living, your way.

jll.co.uk/residential

© 2019 Jones Lang LaSalle IP, Inc. All rights reserved. All information contained herein is from sources deemed reliable; however, no representation or warranty is made to the accuracy thereof.

