



Westbourne Apartments
Fulham, SW6

CHESTERTONS



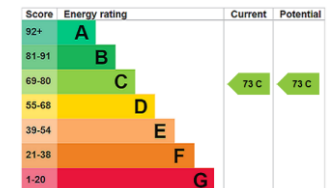


A modern fourth floor apartment within a roof-top development arranged as an open plan kitchen/reception space with balcony, together with double bedroom, bathroom and utility.

The development is situated on the banks of the River Thames just a short distance from the Hurlingham Club and New King's Road. Extensive amenities can be found of both Townmead Road and Wandsworth Bridge Road.

- Modern fourth floor apartment
- Within a roof-top development
- Open plan kitchen/reception, balcony
- Double bedroom, bathroom, utility

Offers in excess of
£550,000



Tenure: Leasehold 985 years 6 months
Service Charge: £4466
Ground Rent: £497
Local Authority: Hammersmith & Fulham
Council Tax Band: E

Chestertons Fulham Road Sales

654 Fulham Road
 Fulham
 London
 SW6 5RU

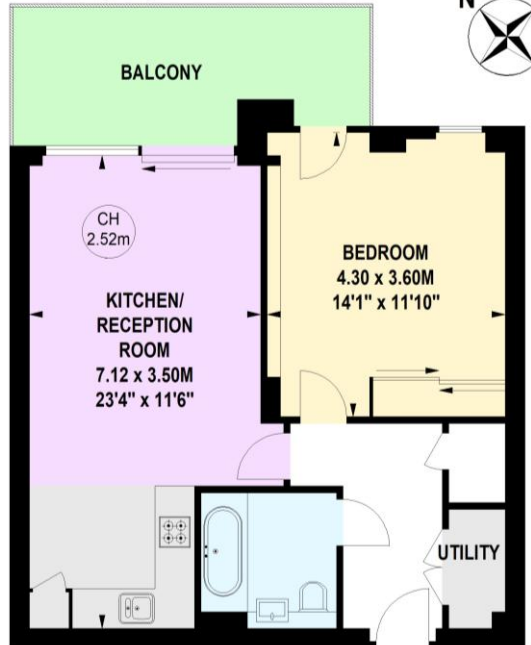
fulham@chestertons.co.uk
 020 7384 9898

Westbourne Apartments, SW6

Approximate gross internal area

52.58 sq m / 566 sq ft

Key :
CH - Ceiling Height



Fourth Floor

The floor plan is not to scale and measurements and areas shown are approximate and therefore should be used for illustrative purposes only.

The plan has been prepared in accordance with the RICS code of Measuring Practice and whilst we have confidence in the information produced, it must not be relied on.

If there is any aspect of particular importance, you should carry out or commission your own inspection of the property.

