



fineandcountry.com

FINE & COUNTRY

The Gables, North Fambridge CM3

£1,250,000

🛏️ 5 🚿 4 🛋️ 3



Nestled in the sought-after riverside village of North Fambridge with views across countryside to the River Crouch, this beautifully styled five-bedroom home offers an exceptional blend of luxury, comfort, and modern elegance. Boasting three en-suite bedrooms including a stunning principal suite complete with a private dressing room, this residence is perfectly designed for refined family living. At the heart of the home lies a bespoke kitchen/dining/family room, thoughtfully crafted to meet the highest standards, ideal for both everyday living and entertaining. Additional highlights include a spacious double garage, large sun terrace and south facing garden which overlooks open countryside towards the river.

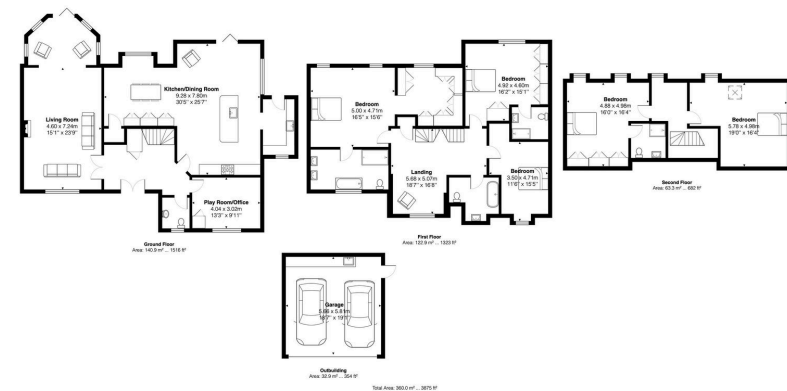
A gated entrance opens to a sweeping paved driveway, providing ample parking for multiple vehicles and leading to a detached double garage with internal heating and a pitched roof. Step inside the property, which is set over three floors, with double entrance doors leading into a welcoming hallway with a cloakroom/wc and coats storage. The ground floor offers underfloor heating throughout. Features of this high-spec residence include Villeroy & Boch sanitaryware, oak flooring, walnut internal doors, Sonos sound system, 'Zebrano wood' fitted wardrobes, double glazing and bi-folding doors, Rako lighting, LPG heating system, vertical radiators and stylish décor throughout. Step outside and the sun terrace sweeps around the property providing lots of relaxing and entertaining space with Sonos speakers. Beyond is the garden which offers well tended lawns, flowers and shrubs with boundary fencing offering open views to the rear.

Located in one of North Fambridge's favoured residential locations only being a short walk away from the popular Ferryboat Inn, the Crouch estuary and of course the Marina which is home to numerous privately owned sailing boats and yachts. The area has a strong sailing and maritime history with a marina and is a haven for walkers due to its close proximity to the Saltmarsh Coastal trail, spanning approx. 75 miles of stunning coastline in the Maldon District. North Fambridge railway station is approximately a 10 to 15 minute walk away with trains to Stratford and Liverpool Street.





- Views across to the River Crouch
- Four bathrooms, principal bedroom suite with walk-in dressing room
- Top floor bedroom/cinema room
- Sonos system, Rako lighting, bi-folding doors
- Private gated entrance
- Beautifully styled 5 bedroom interior over three levels
- Ground floor entertaining/family space with underfloor heating
- High specification throughout, energy-saving features
- Detached double garage with heating
- Rail links to central London nearby



FOR ILLUSTRATIVE PURPOSES ONLY: NOT TO SCALE
 Whilst every attempt has been made to ensure the accuracy of the floor plan shown, all measurements, positioning, fixtures, features, fittings and any other data shown are an approximate interpretation for illustrative purposes only and are not to scale. The responsibility is taken for any errors, omissions, mis-statement or use of data shown.
 Property marketing provided by www.matthewstyle.co.uk

FINE & COUNTRY MID & SOUTH ESSEX

1st Floor, 101-135 Kings Road, Brentwood, Essex, CM14 4DR

T 01277 714044 | E midessex@fineandcountry.com

fineandcountry.com

