

FREEHOLD



House - Semi-Detached (EPC Rating: C)

# 90 MARSHLANDS ROAD, LITTLE NESTON, NESTON, CH64 0SU

Offers in the region of

## £323,000

### FEATURES

- Immaculate 4-bedroom home
- Peaceful Little Neston location
- Close to King Charles Path
- Modern interior design
- No onward chain
- Near Burton Marshlands
- Ideal for outdoor families
- Three double bedrooms



**HC** Hodgson Carr  
SALES & LETTINGS

# 4 Bedroom House - Semi-Detached located in Neston

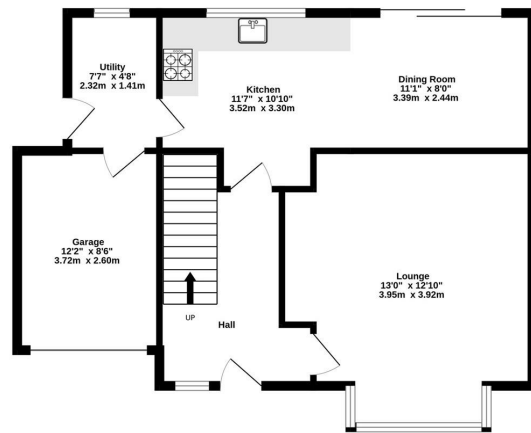
Nestled in the serene surroundings Little Neston, this immaculate four-bedroom home offers a perfect blend of modern living and natural beauty. This impressive property has been perfectly extended and maintained by the current owner. Ideally situated just moments away from the picturesque Burton Marshlands, the scenic King Charles Coastal Path, and a convenient cycle route leading to North Wales. This location is perfect for families who cherish outdoor activities while enjoying the tranquillity of village life.

The home is presented in excellent condition and is offered with no onward chain, making it an attractive option for prospective buyers. The interior boasts a bright and contemporary design, featuring three spacious double bedrooms and a large single room, providing ample space for a growing family. The master bedroom includes a modern ensuite, while the family bathroom is stylishly appointed to meet the needs of everyday living.

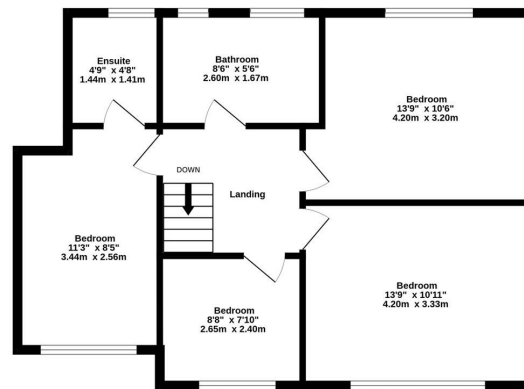
Call us on  
**0151 832 1888**  
[info@hodgsoncarr.com](mailto:info@hodgsoncarr.com)

**Council Tax Band**  
**B**

GROUND FLOOR



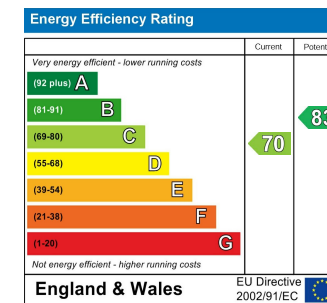
FIRST FLOOR



MARSHLANDS ROAD, LITTLE NESTON

TOTAL FLOOR AREA: 1141sq.ft. (106.0 sq.m.) approx.

While every attempt is made to ensure the accuracy of this floorplan, measurements are approximate only and no responsibility is accepted by Metropix ©2023 in relation to any error, omission or mis-statement. The plan is for illustrative purposes only and should be used as such by any prospective purchaser. Made with Metropix ©2023



Agents Note: Whilst every care has been taken to prepare these particulars, they are for guidance purposes only. All measurements are approximate and are for general guidance purposes only and whilst every care has been taken to ensure their accuracy, they should not be relied upon and potential buyers are advised to recheck the measurements.