



MARCO HARRIS  
THE PROPERTY PROFESSIONALS

## Goodlands Vale, Hedge End, Southampton, SO30

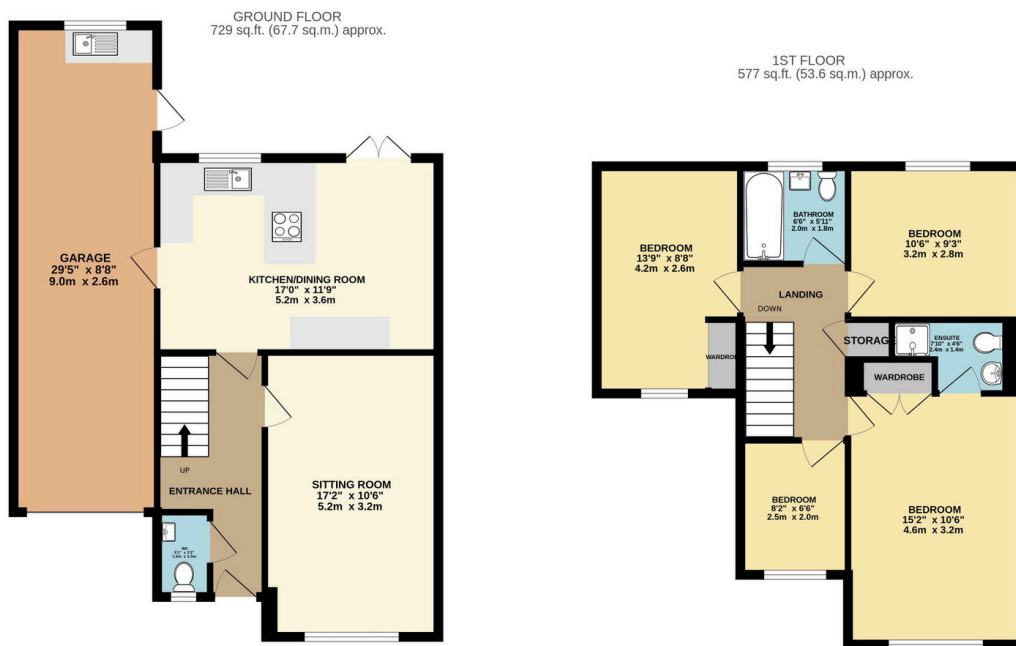
Guide Price £450,000

4 2 1





- Extended Four Bedroom Detached Family Home Positioned In A Quiet Cul-De-Sac
- Spacious Open Plan Kitchen Dining Area Modernised Within The Last Two Years
- Principal Bedroom With Built-In Wardrobe & Modern En-Suite Shower Room
- Private Rear Garden Backing Onto Woodland, Featuring Decking Area & Lawn With Side Access
- Easy Access To Motorway Links, Bus Stops & Hedge End Train Station
- Sought After Residential Location In Goodlands Vale Walking Distance To Multiple Schools
- Stylish Fitted Kitchen With Integrated Appliances Including Dishwasher, Fridge/Freezer, Oven & Induction Hob
- Versatile Integral Garage Which Has Been Partial Conversion
- Driveway parking Plus Additional On Street Parking
- Walking Distance To Hedge End Retail Park & Hedge End Village



TOTAL FLOOR AREA: 1306 sq.ft. (121.4 sq.m.) approx.  
Whilst every attempt has been made to ensure the accuracy of the floorplan contained here, measurements of doors, windows, rooms and any other items are approximate and no responsibility is taken for any error, omission or mis-statement. This plan is for illustrative purposes only and should be used as such by any prospective purchaser. The services, systems and appliances shown have not been tested and no guarantee as to their operability or efficiency can be given.  
Made with Metropix ©2020.

Discover this beautifully extended four-bedroom detached home in the highly desirable Goodlands Vale. Perfectly suited for family life, the property combines generous living spaces, a contemporary open-plan kitchen-dining area, and a serene rear garden overlooking woodland. With modernised bathrooms, versatile bedrooms, and excellent access to local schools, motorways, and retail amenities, this home offers both comfort and convenience in one exceptional package.