



Price
£775,000

Freehold

4x  2x  1x 

**Hartington Road,
Walthamstow, E17**

 **DOUGLAS
ALLEN**
Helping you move forwards



Main features

- Stunning period family home
- Bright and spacious through lounge
- Well-presented fitted kitchen with ample storage
- Lovely rear garden
- Located on the edge of St James Park
- Excellent transport links & close to local amenities

Accommodation

GROUND FLOOR

Lounge/Dining Area: 24'8 x 13'3 (7.52m x 4.04m)
Kitchen/Breakfast Room: 13'8 x 10'3 (4.17m x 3.13m)

FIRST FLOOR

Bedroom 1: 13'5 x 10'4 (4.09m x 3.15m)
Bedroom 2: 11'2 x 8'2 (3.41m x 2.49m)
Bathroom

SECOND FLOOR

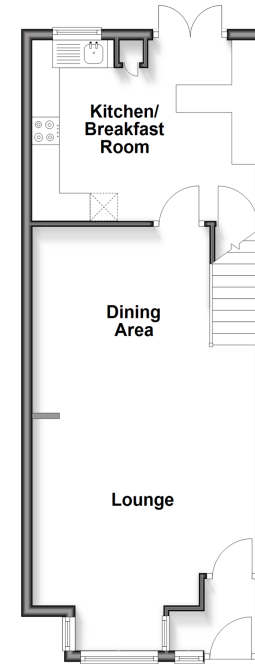
Bedroom 3: 12'3 x 10'6 (3.74m x 3.20m)
Bedroom 4: 9'7 x 8'5 (2.92m x 2.57m)
Second Floor Bathroom

OUTSIDE

Front Garden
Rear Garden

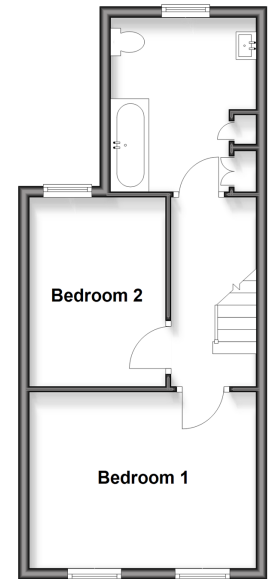
Ground Floor

Approx. 45.1 sq. metres (485.5 sq. feet)



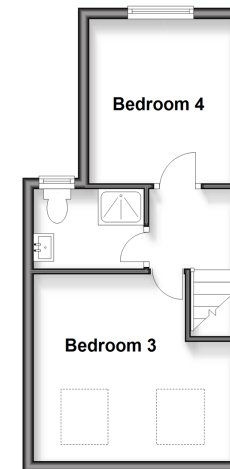
First Floor

Approx. 36.5 sq. metres (392.9 sq. feet)



Second Floor

Approx. 25.9 sq. metres (278.6 sq. feet)



Call Walthamstow - 020 8509 0092 ■ douglasallen.co.uk

- A private rental licensing scheme applies to some properties in this area, please check with the Local Authority before proceeding
- Legal advice should be taken to verify fixtures/fittings, planning, alterations and/or lease details
- Appliances & services are untested, dimensions are approximate and floor plans are not to scale



53118077/20260117/KS/SC