



Greenham Road, N10

£1,550,000

This well presented Edwardian home boasts five double bedrooms, two reception rooms and stunning period features throughout. The house also benefits from having two w/c's, Ensuite and a spacious reception room leading on to a mature sized garden with a roof terrace with fantastic views.

Situated off of Coppetts Road which leads directly up to Muswell Hill Broadway and frequent bus routes that make all local underground stations easily accessible. The property falls within high demand catchments such as Fortismere secondary school and Coldfall primary school.

Features

- Five Bedrooms
- Guest WC
- Two Receptions
- Private Roof Terrace
- Period Features
- Double Glazing



Greenham Road, N10

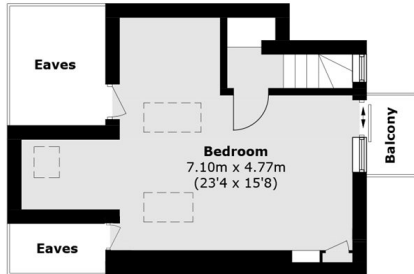
On entrance, you are greeted by a spacious hallway with high ceilings and hand crafted Edwardian woodwork. To the right of the hallway is access to generously sized dining/kitchen area perfect for entertaining. Down the hallway you are met with another reception room with direct access via the bi-folding doors to the garden. Off the hallway there is also a guest WC and a cellar suitable for storage.

The first floor comprises of three double bedrooms with one benefitting from an en-suite bathroom. There is also a shared family bathroom on the first floor decorated to a high standard.

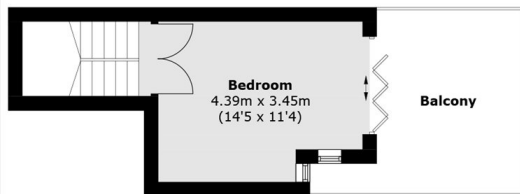
The second floor has another well proportioned bedroom offering fantastic skyline views from a well designed roof terrace. Further up the stairs there is another double bedroom boasting lots of natural light and a private balcony space.



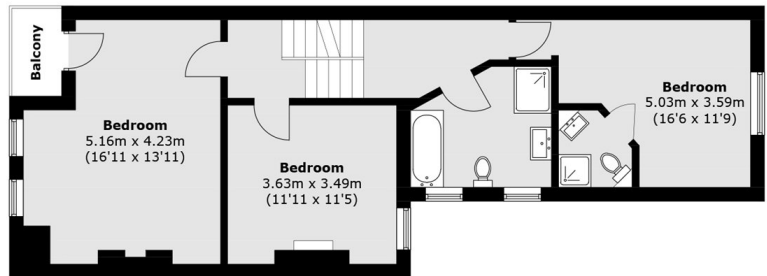
Greenham Road, London, N10



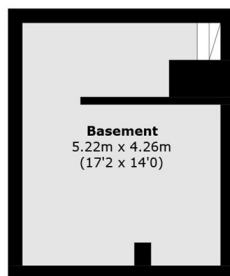
Third Floor



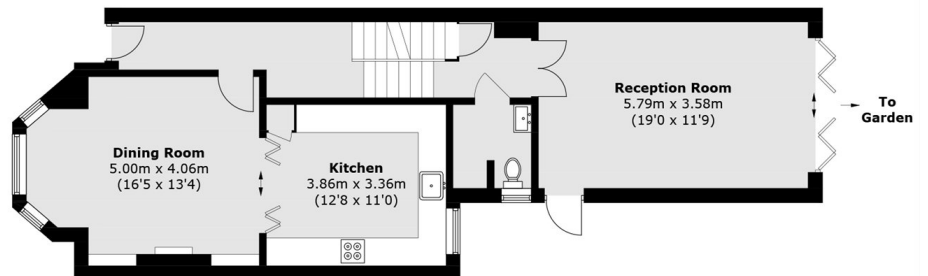
Second Floor



First Floor



Lower Ground Floor



Ground Floor

Total area (approx.): 207.4 sq. m (2,232.4 sq. ft)
(Including Basement / Excluding Eaves)
Balcony: 17.0 sq. m (183.0 sq. ft)