



**Allsop Place, NW1**  
**£1,500,000**

**Dexters**



## Allsop Place, NW1

A beautifully presented two double bedroom, two bathroom apartment with a private balcony and secure under-building parking. Ideally located between Regent's Park and Marylebone High Street.

This modern apartment offers spacious living with two well-proportioned double bedrooms, including a principal bedroom with en-suite bathroom, a stylish family bathroom, and an open-plan living and dining area leading to a private balcony. The property also benefits from secure underground parking, lift access, and a concierge service.

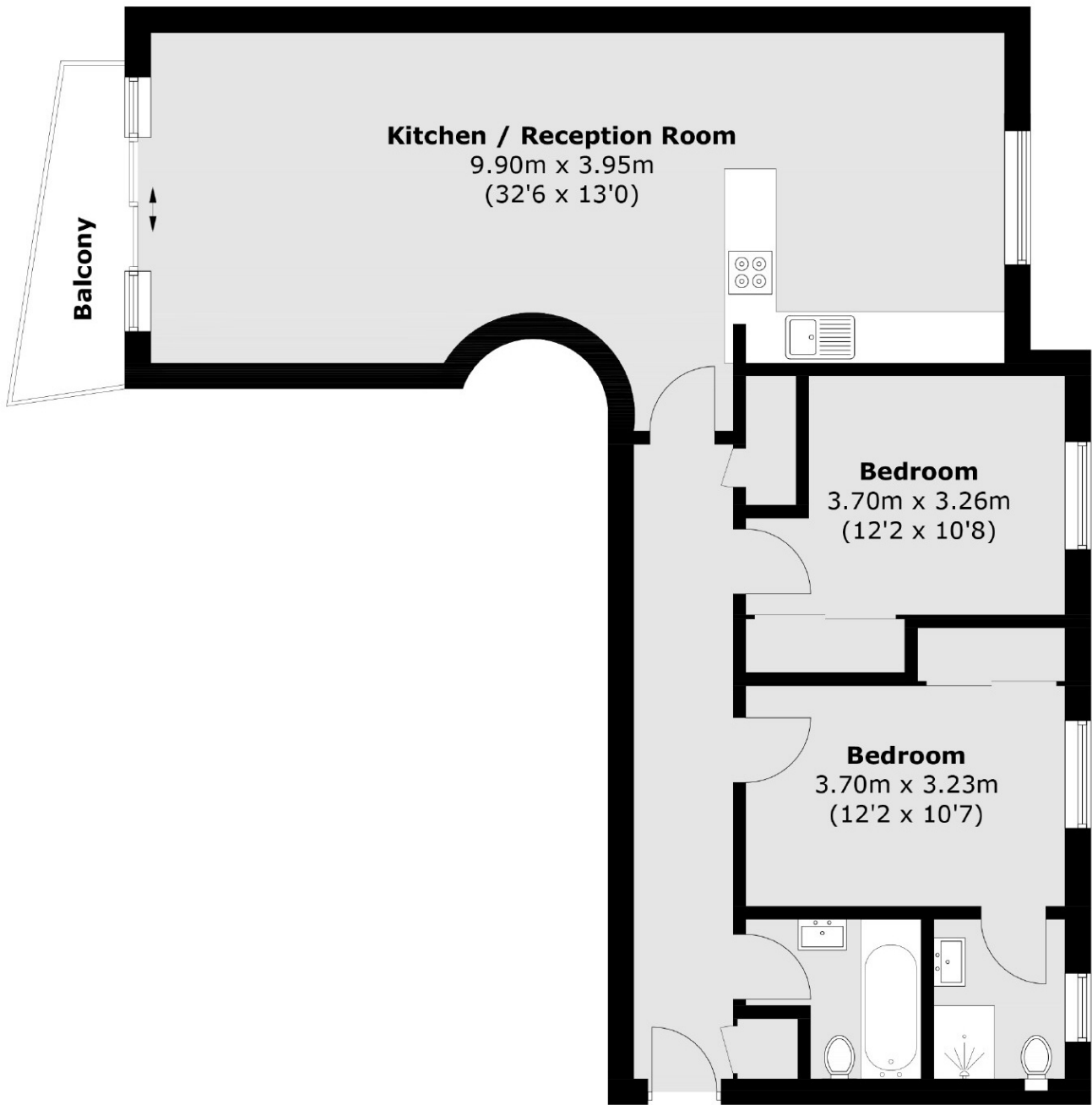
Situated in a prime central London location, residents enjoy close proximity to the open spaces of Regent's Park and the vibrant shops, restaurants, and cafés of Marylebone High Street.

### Features

- Two Double Bedrooms
- Two Bathrooms
- Under Building Parking Space
- Day Porter And Lift
- Third Floor
- Lease 999 From 2010



# Allsop Place, London, NW1



**Third Floor**