



Wild Wood Cottage Cutlers Green, Thaxted Dunmow £895,000 **Freehold**



# Key Features



- Stunning Grade II Listed detached thatched cottage
- Four double bedrooms
- Large sitting room with open fire
- Spacious dining room with lounge area
- Gorgeous modern kitchen/diner

Wild Wood Cottage is a beautifully presented Grade II listed detached thatched cottage offering an abundance of character, charm and exceptional living space. Originally two separate cottages, the property has been thoughtfully improved by the current owners while retaining a wealth of period features throughout.

Approached via a gravelled driveway providing ample parking for several vehicles, the cottage immediately impresses with its attractive appearance and idyllic setting. Entering through the porch, you are welcomed into a spacious sitting room where exposed timbers, period detailing and a stunning inglenook fireplace create a warm and inviting atmosphere. The accommodation

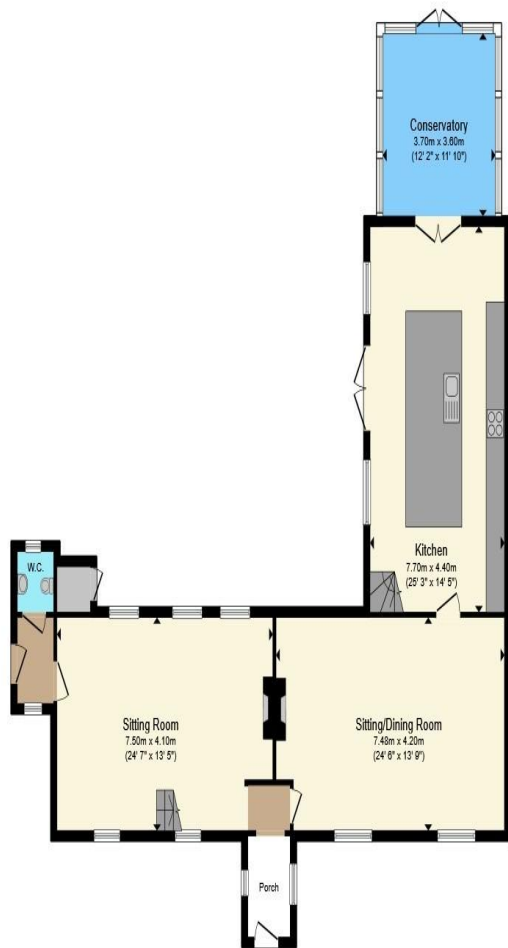


flows seamlessly into a second generous reception room, featuring a dedicated dining area with exposed beams and a comfortable lounge space centred around a further open fireplace. The dining area leads through to the breathtaking kitchen/breakfast room, undoubtedly the heart of the home. Beautifully appointed with a large central island, integrated appliances and ample space for everyday family living, this superb room opens into a conservatory that enjoys delightful views over the gardens and provides the perfect space for relaxation. A downstairs cloakroom completes the ground floor accommodation.

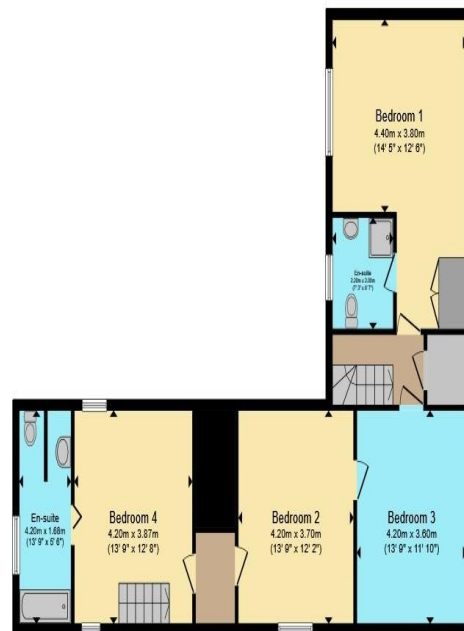
The bedroom accommodation is arranged over two staircases, enhancing the cottage's unique character. One staircase leads to a spacious double bedroom with a contemporary en-suite bathroom, while a second staircase from the kitchen provides access to three further double bedrooms, including the principal bedroom with a stylish modern en-suite.

Outside, the property continues to impress with generous lawned gardens to both the front and rear, complemented by a patio

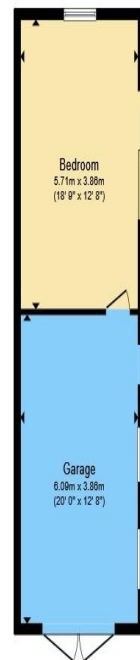




**Ground Floor**



**First Floor**



**Outbuilding**

Total floor area 255.6 sq.m. (2,751 sq.ft.) approx

This floor plan is for illustrative purposes only. It is not drawn to scale. Any measurements, floor areas (including any total floor area), openings and orientation are approximate. No details are guaranteed, they cannot be relied upon for any purpose and they do not form part of any agreement. No liability is taken for any error, omission or misstatement. A party must rely upon its own inspection(s). Powered by [www.propertybox.io](http://www.propertybox.io)



area ideal for outdoor entertaining and al fresco dining. Further enhancing the property's versatility is an annexe adjoining the garage, offering excellent potential as guest accommodation, a home office or studio space. This exceptional character home must be viewed to be fully appreciated. Early viewing is highly recommended.

Hallway

Downstairs Cloakroom

Sitting Room  
7.50m x 4.10m  
24'7" x 13'6"

Lounge & Dining Room  
7.48m x 4.20m  
24'8" x 13'9"

Kitchen/Breakfast Room  
7.70m x 4.40m  
25'3" x 14'5"

Conservatory  
3.70m x 3.60m  
12'2" x 11'10"

To view this property call Kevin Henry on:  
01799 513632

# Selling your property?

Contact us to arrange a FREE home valuation.

 01799 513632

 1 Market Street, SAFFRON WALDEN, Essex, CB10 1JB

 [sales@kevinhenry.co.uk](mailto:sales@kevinhenry.co.uk)

 [www.Kevinhenry.co.uk](http://www.Kevinhenry.co.uk)



 SCAN ME



Kevin Henry is a trading name of Sharman Quinney Holdings Limited which is registered in England and Wales under company number 4174227, Registered Office is Cumbria House, 16-20 Hockliffe Street, Leighton Buzzard, Bedfordshire, LU7 1GN. VAT Registration Number is 500 2481 05.

1: These particulars do not constitute part or all of an offer or contract. 2: The measurements indicated are supplied for guidance only and as such must be considered incorrect. 3: Potential buyers are advised to recheck the measurements before committing to any expense. 4: Kevin Henry has not tested any apparatus, equipment, fixtures, fittings or services and it is the buyers interests to check the working condition of any appliances. 5: Kevin Henry has not sought to verify the legal title of the property and buyers must obtain verification from their legal representative. 6: Intending purchasers will be asked to produce identification documentation at a later stage and we would ask your co-operation in order that there will be no delay in agreeing the sale. Ref: SAF102858 - 0004

