

£295,000

Cambridge Heath Road

London, E1 5RZ

Located just moments from Bethnal Green and Whitechapel Underground Stations is this 2nd floor 1 bedroom apartment set on the 2nd floor of a purpose built block.

The property features a good size reception room, fitted kitchen, family bathroom and double bedroom.

Located in a perfect location for commuting into and out of the city with transport links in all directions including, Bethnal Green tube and mainline stations, Whitechapel tube, Stepney Green tube, Cambridge Heath mainline as well as major bus routes close by. Crossrail is due to be completed shortly and provides another great transport hub.

Victoria Park, Brick Lane and Shoreditch all within a short reach from the property.

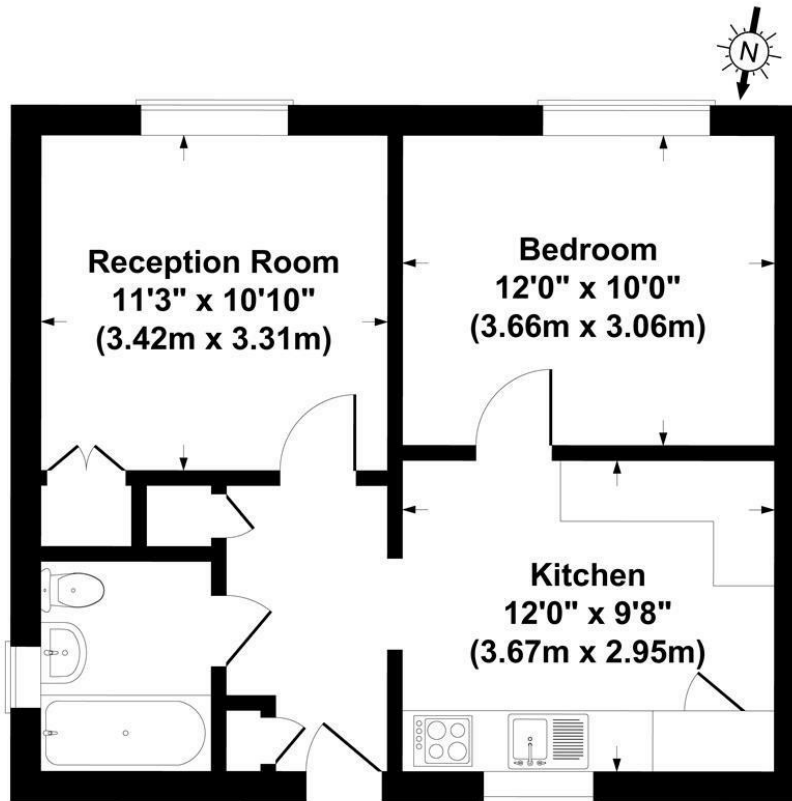
Leasehold: 87 years

Service Charge: £1223 per annum

Ground Rent: £10 per annum

Council Tax: Band B






Second Floor

Sovereign House, London, E1

Gross Internal Area 484 sq ft / 45 sq metres
 Not to Scale. Produced by The Plan Portal 2026
For Illustrative Purposes Only.

Energy Efficiency Rating		
	Current	Potential
<i>Very energy efficient - lower running costs</i>		
(92 plus) A		
(81-91) B		
(69-80) C	75	79
(55-68) D		
(39-54) E		
(21-38) F		
(1-20) G		
<i>Not energy efficient - higher running costs</i>		
England & Wales	EU Directive 2002/91/EC 	

Agents Note: Whilst every care has been taken to prepare these particulars, they are for guidance purposes only. All measurements are approximate and are for general guidance purposes only and whilst every care has been taken to ensure their accuracy, they should not be relied upon and potential buyers/tenants are advised to recheck the measurements

OFFICE ADDRESS
 88 Cheshire Street
 London
 E2 6EH

OFFICE DETAILS
 0207 739 6969
 info@peachproperties.com
 www.peachproperties.com