



Greenleaf Walk, UB1

£703 Per week

A truly spectacular three bedroom penthouse apartment that has been finished to the highest specification throughout. The property offers an abundance of living space and a South facing balcony overlooking an impressive skyline.

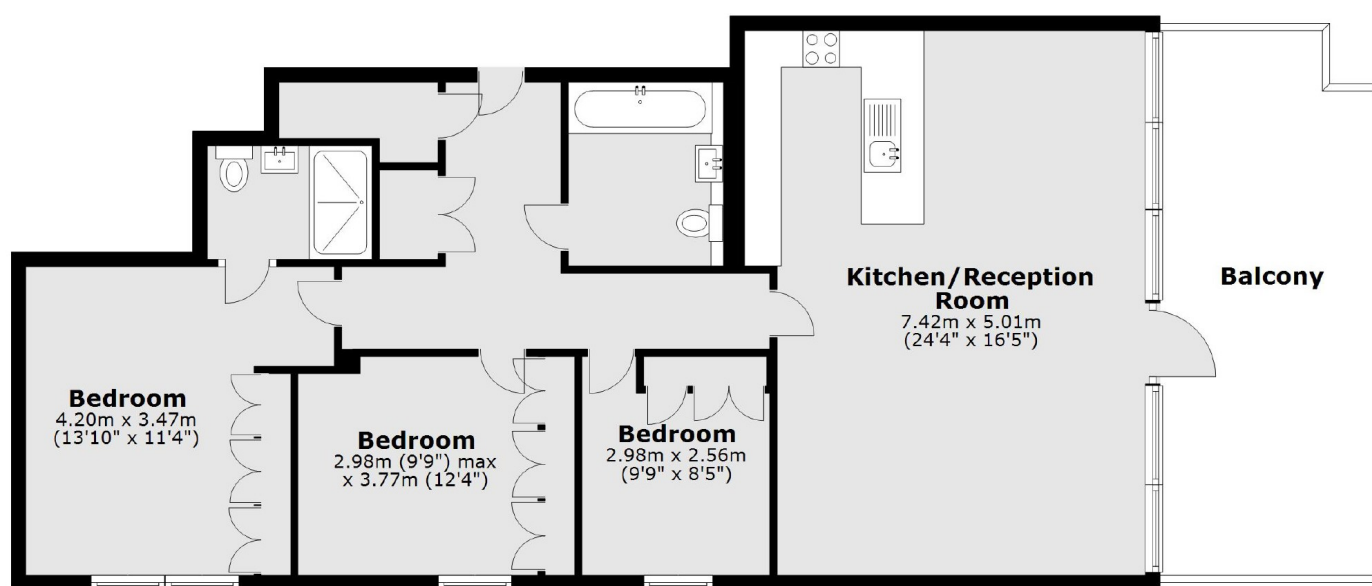
Watson House is Located in this new quiet development, just a short walk from Southall Station on the new Elizabeth line. Southall is renowned for its colourful markets and vibrant high street.

Features

- New Build
- Three Bedrooms
- Two Bathrooms
- Large Terrace
- South Facing
- 15 Minutes into Paddington

Greenleaf Walk,
Southall, UB1

Eighth Floor



Main area: Approx. 99.1 sq. metres (1067.2 sq. feet)
Plus balconies, approx. 21.7 sq. metres (233.6 sq. feet)

Dexters

Northfields
140 Northfield Avenue
London
W13 9SB
Lettings
020 8545 8589

Energy Rating: B. We aim to make our particulars both accurate and reliable. However they are not guaranteed; nor do they form part of an offer or contract. If you require clarification on any points then please contact us, especially if you're traveling some distance to view. Please note that appliances and heating systems have not been tested and therefore no warranties can be given as to their good working order.

 **RICS** | Regulated
Estate Agent
and Letting Agent

dexters.co.uk