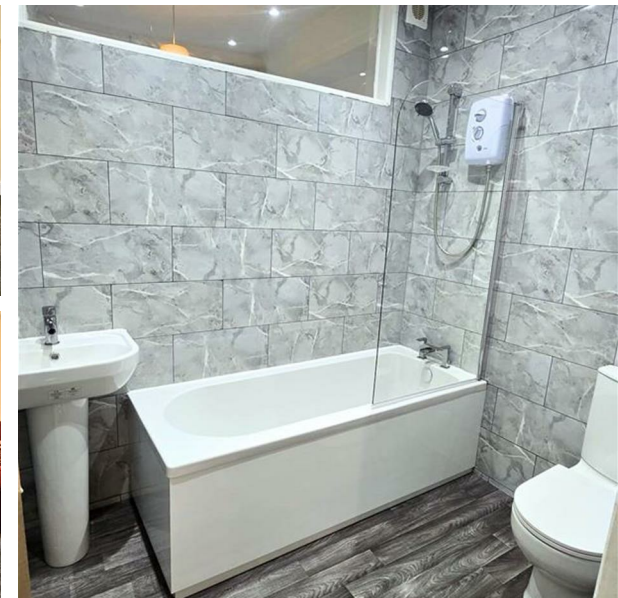


Highbury Road, Manchester, M16 8PT

£1,190 Per Month

Council Tax Band: A





\*Available and reduced\*

This beautifully furnished one-bedroom flat is situated in a quiet, residential area on Highbury Road, M16 8PT — ideal for professional couples or students seeking comfort, convenience, and excellent connectivity.

Key Features:

- Bright and spacious layout
- Modern open-plan kitchen and living area
- Generous double bedroom
- Quiet and peaceful residential location
- Excellent transport links
- Short distance from the city centre and the universities
- Close to shops, supermarkets, cafes, and other local amenities



Open House South Manchester



Energy Efficiency Rating		
	Current	Potential
Very energy efficient - lower running costs		
(92 plus) A		
(81-91) B		
(69-80) C		
(55-68) D	69	
(39-54) E		
(21-38) F		
(1-20) G		
Not energy efficient - higher running costs		
England & Wales	EU Directive 2002/91/EC	