



The Rowan, Restrop Road, Purton
Wiltshire

£650,000



The Rowan, Restrop Road

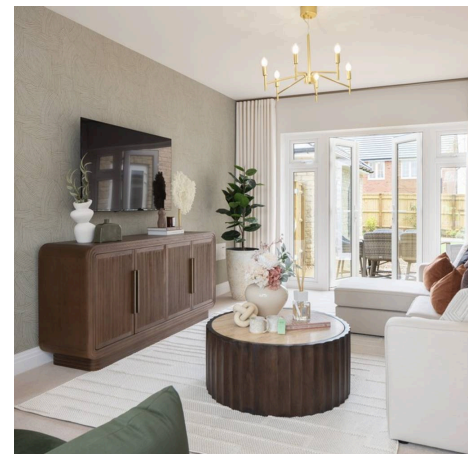
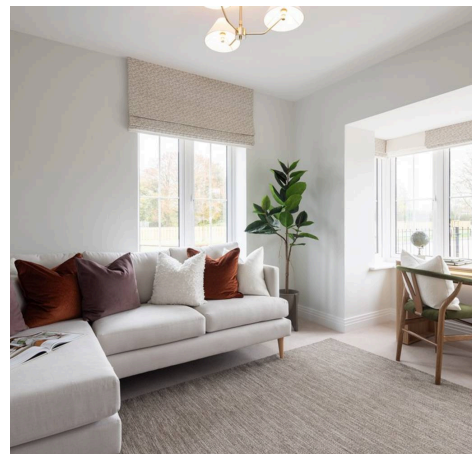
Purton, Wiltshire

This IMPRESSIVE DETACHED NEW HOME offers CONTEMPORARY LIVING with a thoughtful layout, perfect for families and professionals alike. READY TO MOVE INTO, this property is ideal for those seeking a seamless transition to their next home. The welcoming entrance hall leads to a BRIGHT AND SPACIOUS KITCHEN / DINING ROOM, fitted with HIGH-QUALITY APPLIANCES and ample storage, making it the heart of the home for entertaining or family meals. The SEPARATE SITTING ROOM provides a comfortable retreat, while a dedicated STUDY / FAMILY ROOM offers versatile space for remote working or relaxation. A practical UTILITY ROOM and ground floor WC add to the convenience of modern living. Upstairs, there are FOUR WELL-PROPORTIONED BEDROOMS, including TWO LUXURIOUS EN-SUITES and a stylish FAMILY BATHROOM, ensuring comfort and privacy for all.

The property benefits from a SINGLE GARAGE and TWO PARKING SPACES, providing ample off-road parking for residents and guests.

Please note images shown are taken from various showhomes or have been generated by computer (for indicative purposes only and are not to be presumed to be entirely accurate.) Showhome images feature fittings, décor, flooring, soft furnishings and landscaping that are not included as standard. Images are used to suggest possible finishes that can be achieved in your home at an additional cost. Please consult a Sales Representative for further details. Some images have been enhanced.

*subject to terms and conditions



Entrance Hall

Sitting Room

19' 2" x 11' 0" (5.85m x 3.36m)

Kitchen / Dining Room

17' 3" x 14' 4" (5.26m x 4.37m)

Study / family Room

12' 8" x 9' 9" (3.85m x 2.97m)

Utility

WC

Landing

Bedroom 1

17' 5" x 14' 4" (5.31m x 4.37m)

En-Suite

Bedroom 2

14' 6" x 9' 8" (4.41m x 2.95m)

En-suite

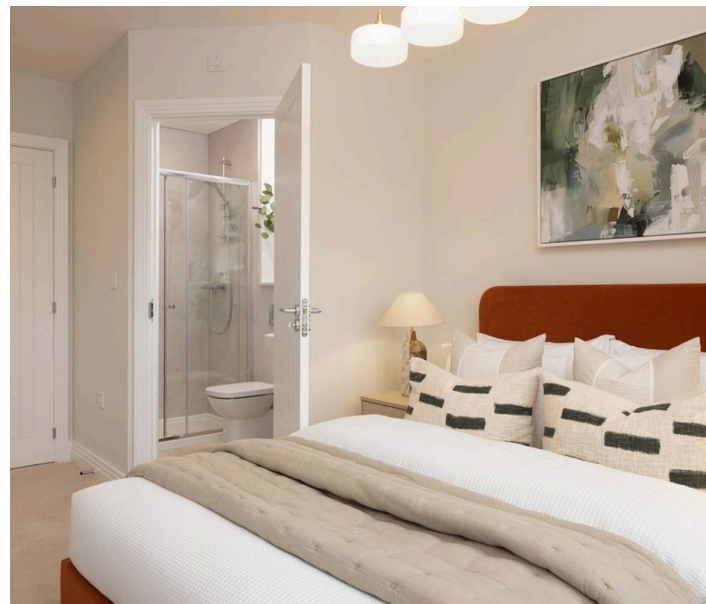
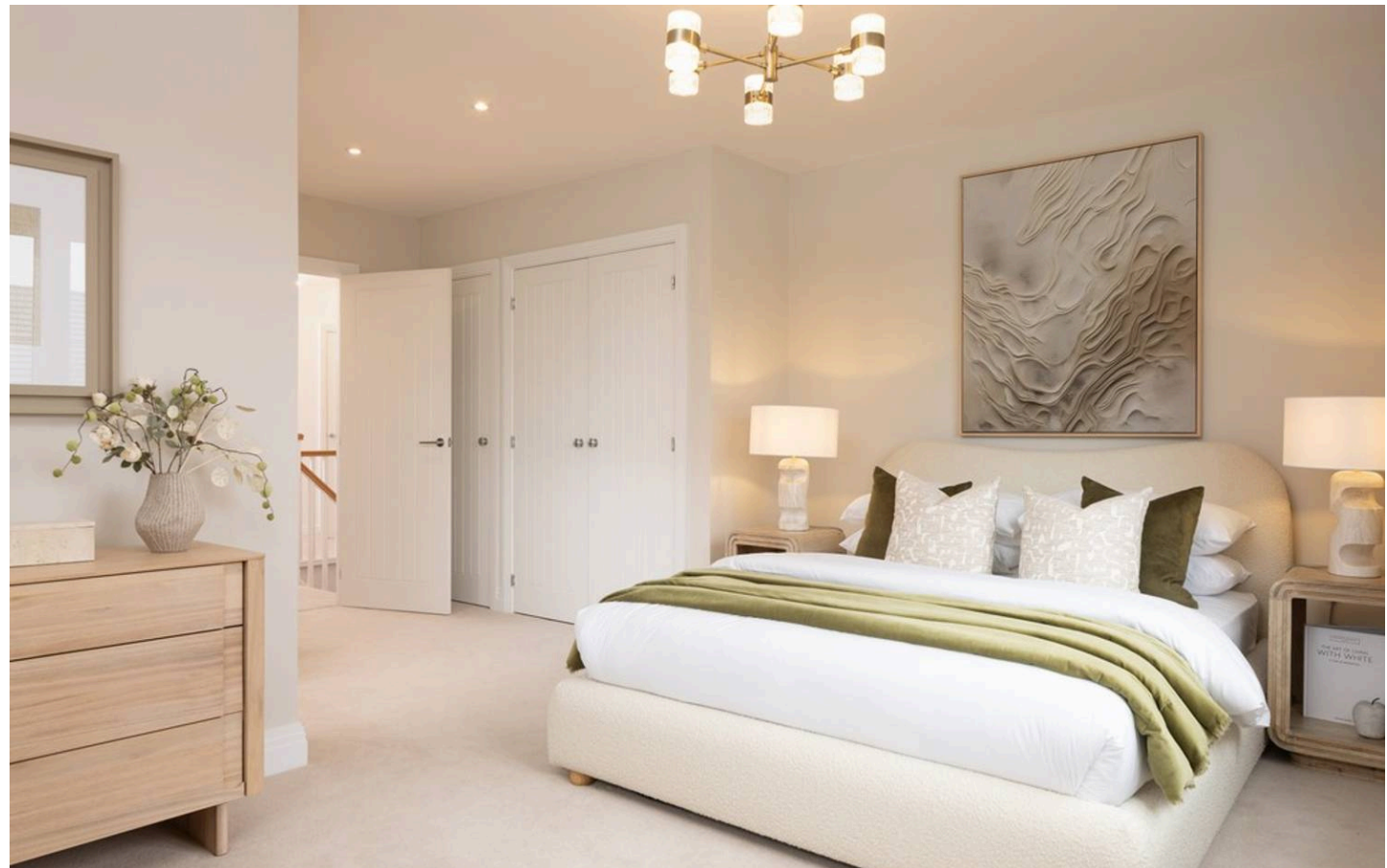
Bedroom 3

8' 2" x 13' 5" (2.49m x 4.08m)

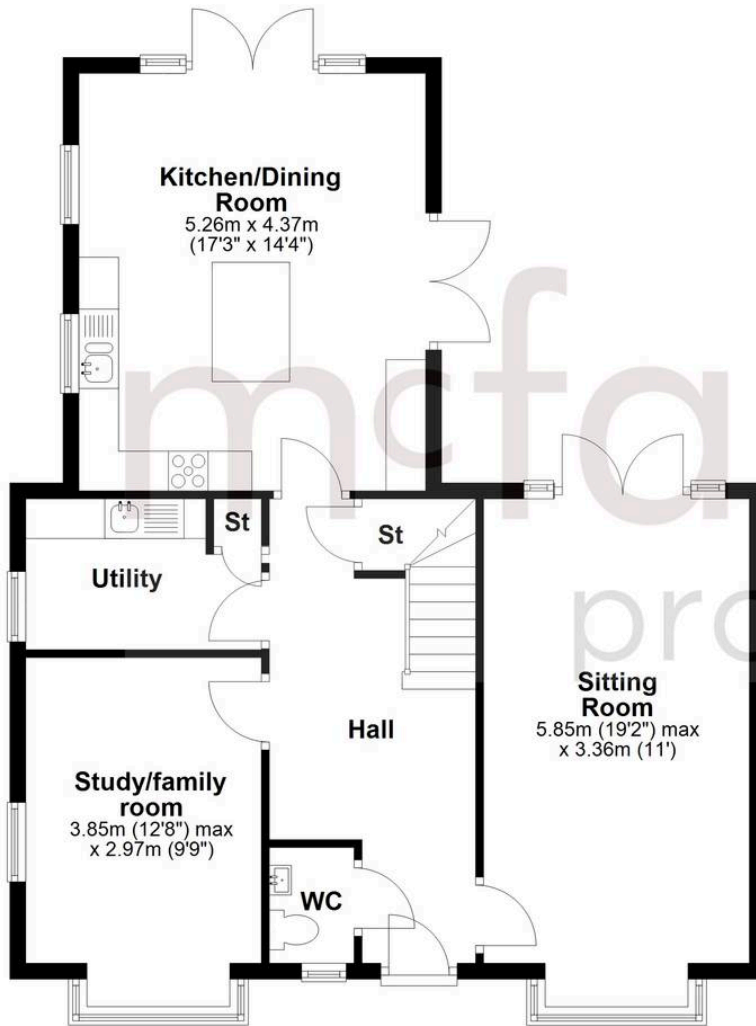
Bedroom 4

8' 1" x 11' 1" (2.47m x 3.39m)

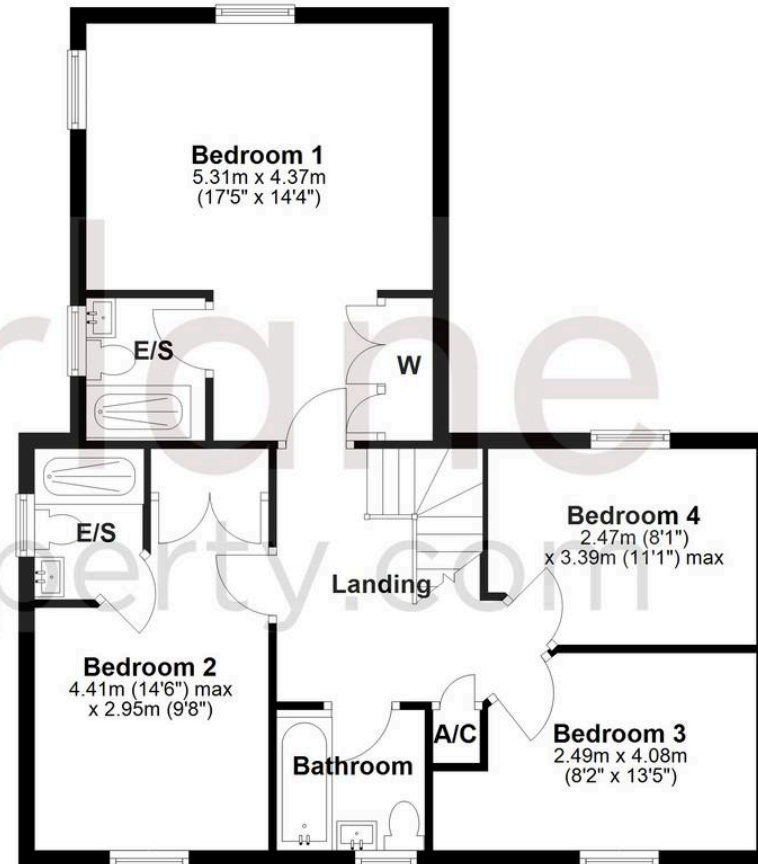
Bathroom



Ground Floor



First Floor



McFarlane Sales & Lettings

Cricklade Sales 36 High Street, Cricklade - SN6 6AY

01793 751044 • cricklade@mcfarlaneproperty.com • www.mcfarlaneproperty.com/