



Guide Price
£550,000

Freehold

3x  1x  2x 

**Ilfracombe Gardens,
Chadwell Heath, Essex,
RM6**

OVER 60?

Secure this property
for up to **59% less!**

 **DOUGLAS
ALLEN**
Helping you move forwards



Main features

- Attractive terraced house with off street parking
- Lounge & separate family room
- Spacious kitchen/diner
- Garage/Outbuilding
- Walking distance to Goodmayes station
- Close to schools, shops & places of worship

Accommodation

GROUND FLOOR

Entrance Hall

Lounge: 11'7 x 10'8 (3.53m x 3.25m)

Family Room : 12'1 x 10'3 (3.69m x 3.13m)

Kitchen/Diner: 10'1 x 9'3 (3.08m x 2.82m) plus
5'8 x 15'9 (1.73m x 4.80m)

BASEMENT

Basement

FIRST FLOOR

Landing

Bedroom 1: 12'6 x 9'1 (3.81m x 2.77m)

Bedroom 2: 11'9 x 10'9 (3.58m x 3.28m)

Bedroom 3: 9'6 x 6'0 (2.90m x 1.83m)

Bathroom

OUTBUILDING 1

Garage

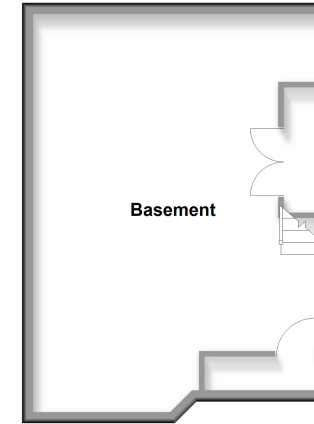
OUTSIDE

Rear Garden

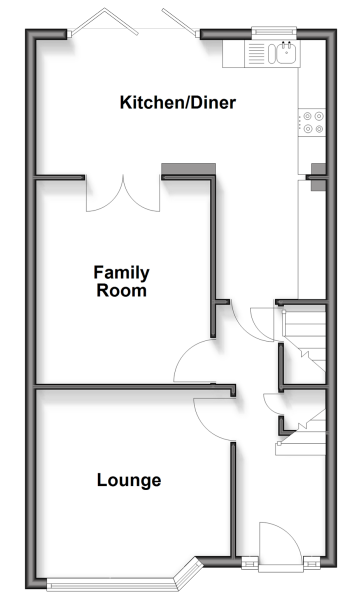
Off Street Parking

Basement

Approx. 36.2 sq. metres (390.1 sq. feet)

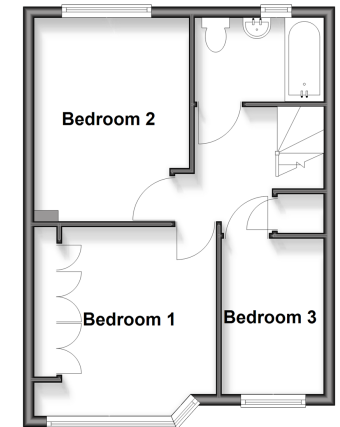


Ground Floor
Approx. 49.4 sq. metres (531.4 sq. feet)



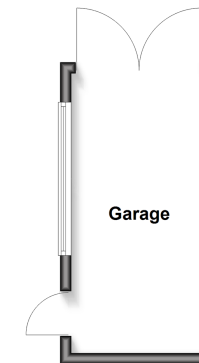
First Floor

Approx. 36.3 sq. metres (390.5 sq. feet)



Outbuilding 1

Approx. 12.3 sq. metres (132.1 sq. feet)



Call Chadwell Heath - 020 8597 0043 ■ douglasallen.co.uk

- A private rental licensing scheme applies to some properties in this area, please check with the Local Authority before proceeding
- Through a Homewise Home For Life Plan people aged 60+ can secure this property for up to 59% less, by purchasing a Lifetime Lease



50714363/20260330/CN/NK