



METROPOLITAN CRESCENT, SW4

£825,000

A fantastic opportunity to secure this beautiful two bedroom, two bathroom apartment located in the historical development known as Metropolitan Crescent. This apartment offers 824 square feet of living space with the living/dining area to be set in an open-plan layout that will be a showcase of natural light.

- 824 Sq Ft
- Modernised Kitchen
- 0.3 Miles To Clapham Common
- Big Windows
- Two Bedroom
- Two Bath

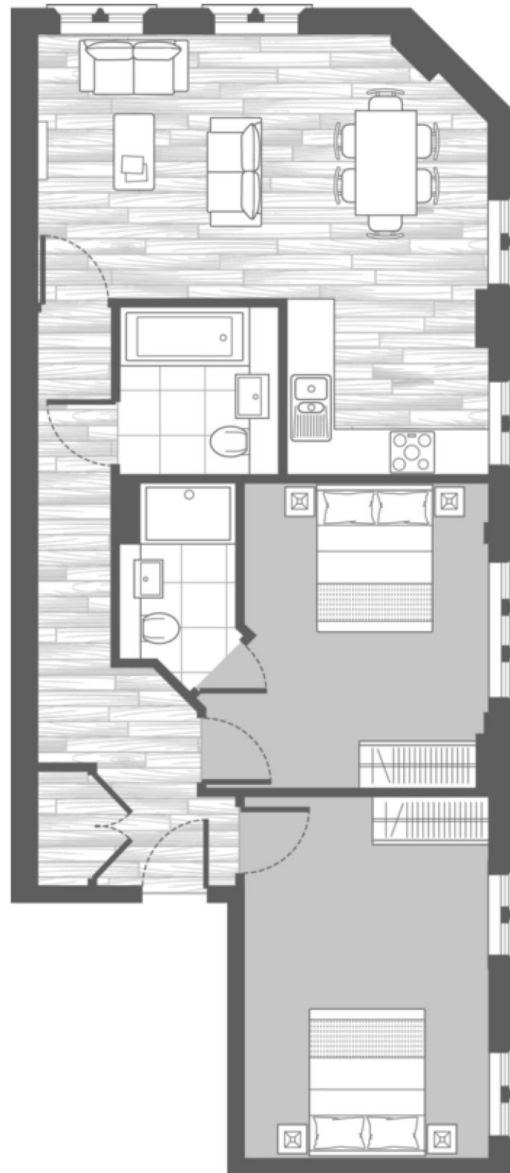


ABOUT THE HOME

Located in the heart of Clapham Common and 0.3 miles from Clapham Common station.







INTERNAL AREA	76.5 SQ M	824 SQ FT
LIVING / DINING	5.9 x 3.4 M	19'3" x 11'2"
KITCHEN AREA	2.3 x 2.6 M	7'6" x 8'6"
MASTER BEDROOM	4.0 x 3.6 M	13'0" x 11'10"
BEDROOM 2	4.7 x 3.1 M	15'4" x 10'2"

LiFE RESIDENTIAL

11 Flagstaff House, London,
SW8 2LZ

Sales: 020 7476 1408

Lettings: 020 7582 7989

Energy Rating: . We aim to make our particulars both accurate and reliable. However they are not guaranteed; nor do they form part of an offer or contract. If you require clarification on any points then please contact us, especially if you're traveling some distance to view. Please note that appliances and heating systems have not been tested and therefore no warranties can be given as to their good working order.