

Willowherb Drive, Horsham

Guide Price £485,000

3 2 1



A Modern Three Bedroom Family Home located in a Popular Development, boasting Two Allocated Parking Spaces, Luxurious En Suite and Cul De Sac Location.

Tenure: Freehold

Council Tax Band: E

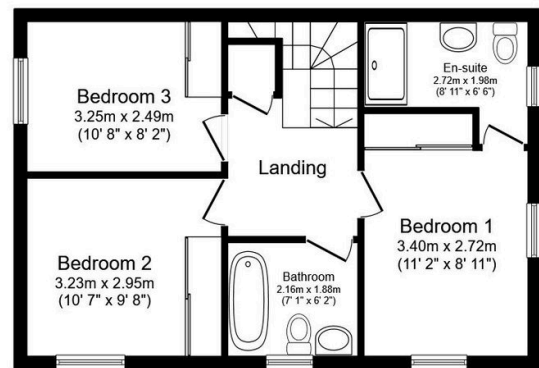
EPC: Current B - Potential A

Key Features

- Watch Our Video Tour
- Cul De Sac Location
- Built In 2024
- 18'2" Kitchen Dining Area
- Built In Wardrobes In All Bedrooms
- Three Bedroom Family Home
- Luxurious En Suite
- Ground Floor WC
- Stylish Bathroom
- Beautifully Presented Throughout



Ground Floor
Floor area 47.3 sq.m. (510 sq.ft.)



First Floor
Floor area 45.8 sq.m. (493 sq.ft.)

Total floor area: 93.2 sq.m. (1,003 sq.ft.)

This floor plan is for illustrative purposes only. It is not drawn to scale. Any measurements, floor areas (including any total floor area), openings and orientations are approximate. No details are guaranteed, they cannot be relied upon for any purpose and do not form any part of any agreement. No liability is taken for any error, omission or misstatement. A party must rely upon its own inspection(s). Powered by www.Propertybox.io