




HOMES BY VICTORIA
ESTATE AGENCY

48 Abbotswood Close, Redditch, B98 0QD

Offers Over £270,000

 3  1  2



Welcome to Abbotswood Close, nestled within the highly sought-after area of Winyates Green. This beautifully presented three-bedroom semi-detached home is truly move-in ready, making it an ideal purchase for first-time buyers or those looking to step onto the property ladder with ease.

[homesbyvictoria.co.uk](https://www.homesbyvictoria.co.uk)

victoria@homesbyvictoria | 07833 136521

FOR M HOMES MIDLANDS LIMITED trading as Homes By Victoria Company Number: 13688840 VAT no: 470190115



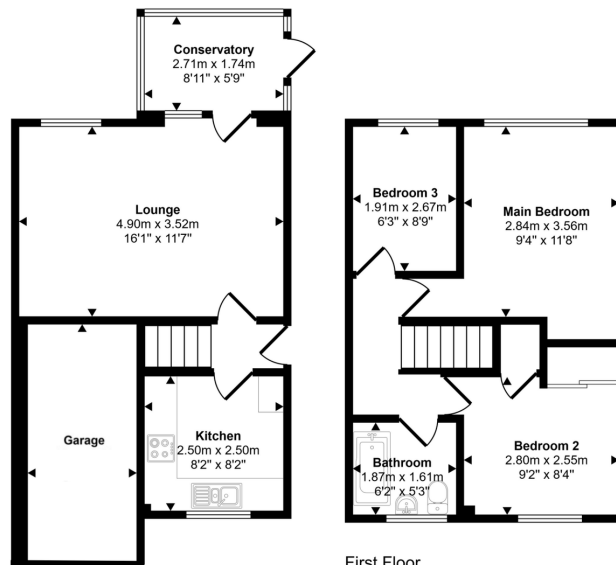
HOMES BY VICTORIA
ESTATE AGENCY



Key Features

- LOCATED IN THE WELL REGARDED WINYATES GREEN
- WELL PRESENTED THREE BEDROOM SEMI DETACHED
- FITTED KITCHEN
- LOUNGE / DINER
- SPACIOUS CONSERVATORY
- THREE WELL PROPORTIONED BEDROOMS
- FAMILY BATHROOM
- PRIVATE REAR GARDEN
- SINGLE GARAGE AND DRIVEWAY
- COUNCIL TAX BAND C

Approx Gross Internal Area
83 sq m / 895 sq ft



First Floor
Approx 35 sq m / 375 sq ft

Ground Floor
Approx 48 sq m / 520 sq ft

This floorplan is only for illustrative purposes and is not to scale. Measurements of rooms, doors, windows, and any items are approximate and no responsibility is taken for any error, omission or mis-statement. Icons of items such as bathroom suites are representations only and may not look like the real items. Made with Made Snappy 360.