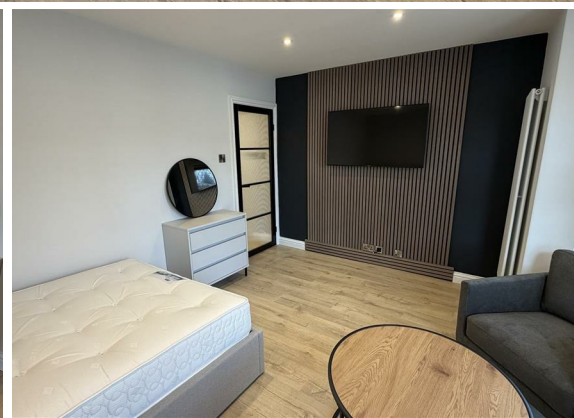


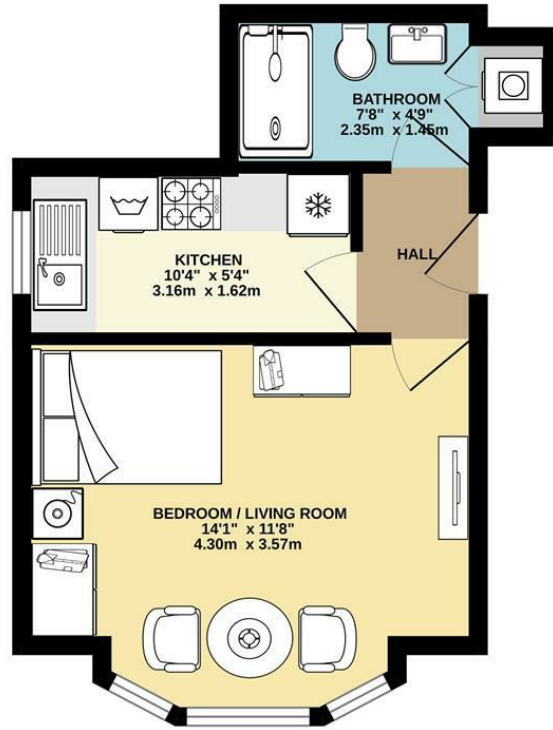


**0 Bed  
Studio  
located in West  
Didsbury**

**£900 PCM**



GROUND FLOOR  
270 sq.ft. (25.1 sq.m.) approx.



TOTAL FLOOR AREA : 270 sq.ft. (25.1 sq.m.) approx.

Whilst every attempt has been made to ensure the accuracy of the floorplan contained here, measurements of doors, windows, rooms and any other items are approximate and no responsibility is taken for any error, omission or mis-statement. This plan is for illustrative purposes only and should be used as such by any prospective purchaser. The services, systems and appliances shown have not been tested and no guarantee as to their operability or efficiency can be given.  
Made with Metropix ©2026

Energy Efficiency Rating		
	Current	Potential
Very energy efficient - lower running costs		
(92 plus) <b>A</b>		
(81-91) <b>B</b>		
(69-80) <b>C</b>	70	73
(55-68) <b>D</b>		
(39-54) <b>E</b>		
(21-38) <b>F</b>		
(1-20) <b>G</b>		
Not energy efficient - higher running costs		
<b>England &amp; Wales</b>	EU Directive 2002/91/EC	

## DIRECTIONS

## CONTACT

31 Barlow Moor Road  
Didsbury  
Manchester  
M20 6TW

E: [office@stantonproperties.co.uk](mailto:office@stantonproperties.co.uk)  
T: 01614345307

