

35 Dorset Drive, Patterdown, SN15 2QZ

£335,000

Located on the Western side of Chippenham, on the new development of Rowden Gate, a three bedroom terrace house. Accommodation comprises: Hallway, living room, kitchen / diner, three bedrooms one with en suite and bathroom. There is allocated parking with the property. Chippenham has a main line rail connection to London Paddington and also provides easy road links to the M4 Motorway Junction 17. Available Now!

Entrance Hallway



Living Room 16'4" x 10'05" (4.98m x 3.18m)



Cloakroom



Kitchen / Diner 15'8" x 9'1" (4.78m x 2.77m)



Bedroom One 9'0" x 8'11" (2.74m x 2.72m)



En Suite



First Floor Landing

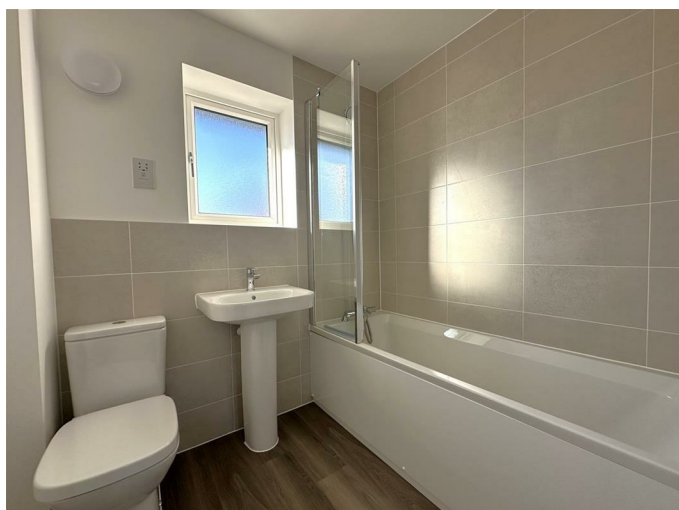


Bedroom Two 9'6" x 9'0" (2.90m x 2.74m)



Bedroom Three 10'6" x 7'0" (3.20m x 2.13m)

Bathroom



Outside

Garden



Parking



Allocated.

Tenure

Freehold.

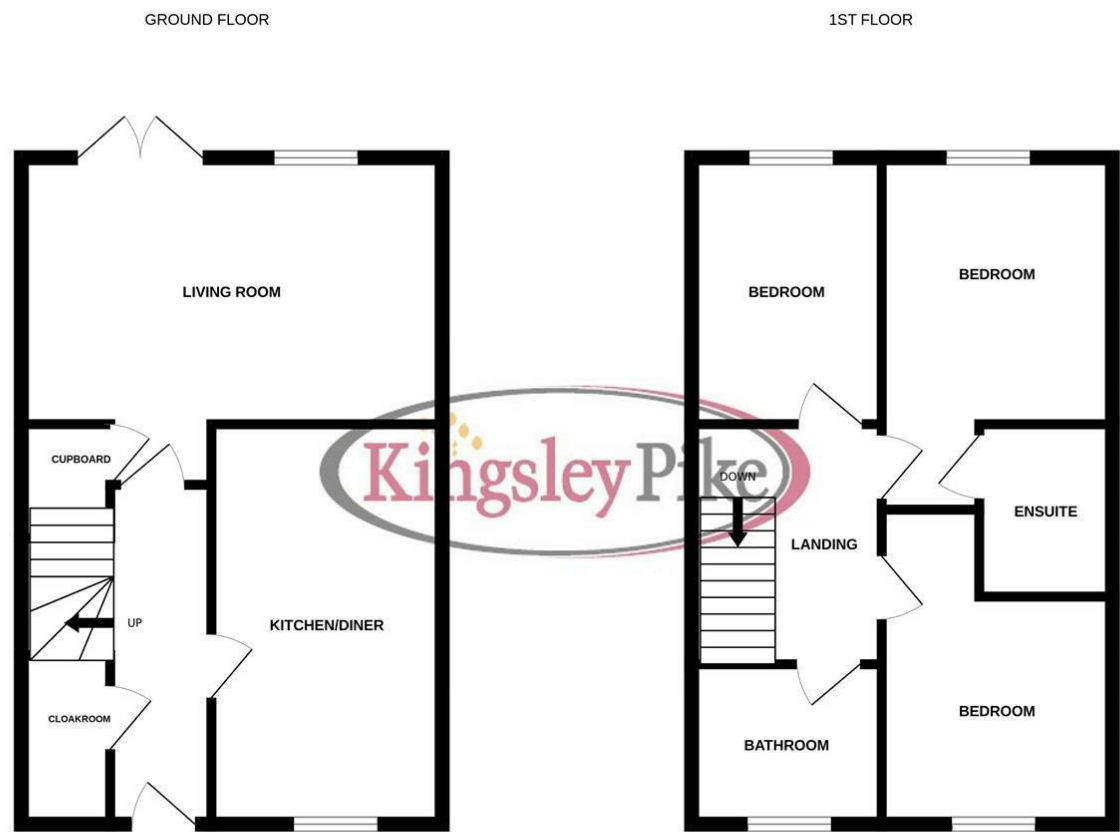
Council Tax Band

To Be Confirmed.

Development Charge

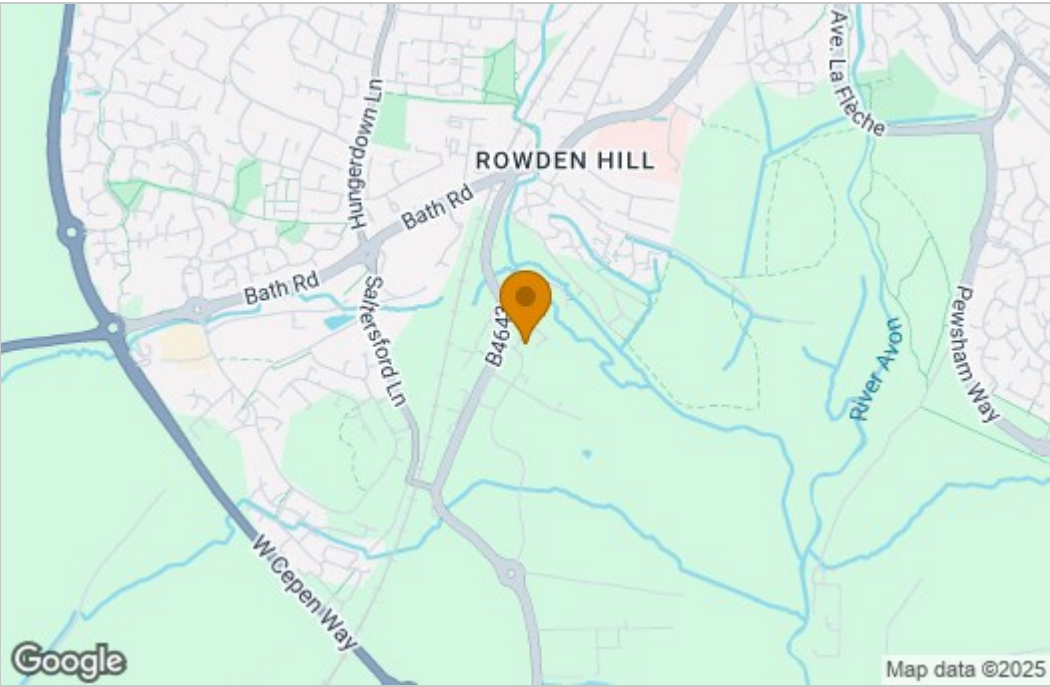
£259.41 / Annual service charge.

Floor Plan

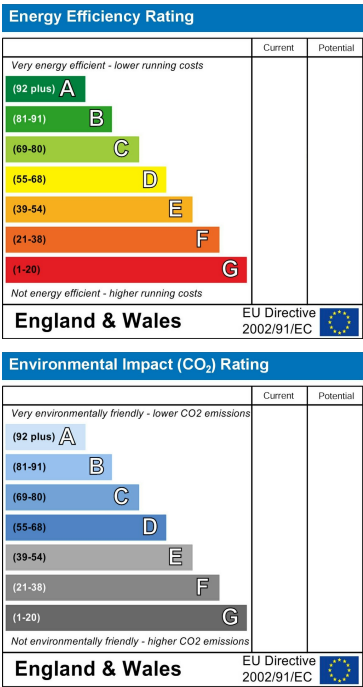


Whilst every attempt has been made to ensure the accuracy of the floorplan contained here, measurements of doors, windows, rooms and any other items are approximate and no responsibility is taken for any error, omission or mis-statement. This plan is for illustrative purposes only and should be used as such by any prospective purchaser. The services, systems and appliances shown have not been tested and no guarantee as to their operability or efficiency can be given.
Made with Metropix 6/2025

Area Map



Energy Efficiency Graph



These particulars, whilst believed to be accurate are set out as a general outline only for guidance and do not constitute any part of an offer or contract. Intending purchasers should not rely on them as statements of representation of fact, but must satisfy themselves by inspection or otherwise as to their accuracy. No person in this firms employment has the authority to make or give any representation or warranty in respect of the property.