



## South Lambeth Road, SW8

£595,000

An exceptionally well presented two double bedroom ground floor flat, featuring a private garden and a share of the freehold. Recently fully renovated to a high standard, the property offers stylish and contemporary living throughout. Highlights include an open-plan reception room with seamless access onto a beautifully maintained garden ideal for entertaining and a cellar providing excellent utility and storage space.

Conveniently located within a short walk of Stockwell tube station. This convenient location is well served with regular bus links, a number of local shops and it is just on the edge of the hugely exciting Nine Elms Development.

### Features

- Two Double Bedrooms
- Private Garden
- Modern Finish
- No Onward Chain
- Share Of Freehold
- Superb Transport Links



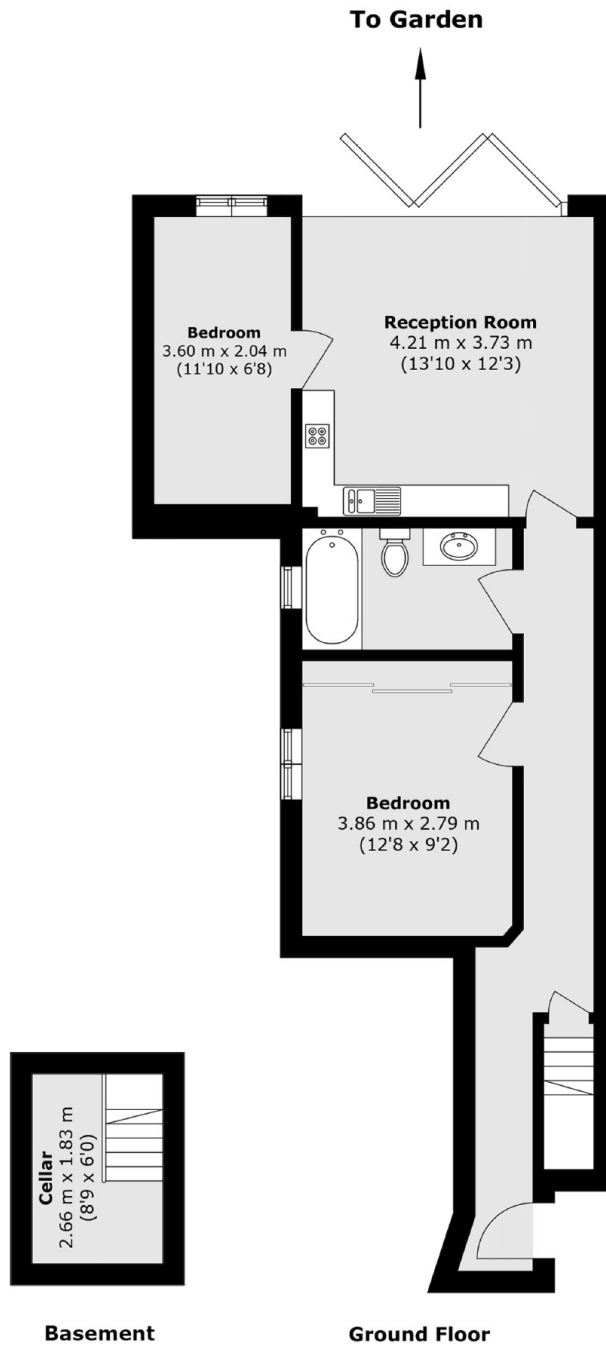
## South Lambeth Road, SW8

Occupying the rear of this beautiful Victorian building, this peaceful home has undergone full refurbishment throughout. The open plan living room is stylish in design, benefitting from a high specification integrated kitchen that combines brilliantly with the living area. Bi-fold doors open up onto a beautifully kept rear garden which becomes a real extension of the living space.

The principle bedroom has built in wardrobes and both bedrooms are served by sumptuous bathroom. Further benefits include a cellar providing excellent storage and utility space for a washing machine and dryer.



# South Lambeth Road, London, SW8



Total area (approx.): 59.4 sq. m (639.3 sq. ft)