



29 Bramble Way, Burscough

£150,000

Bramble Way, Burscough

Situated on the sought-after Heathfields development, this well-presented top floor apartment offers spacious and comfortable living, ideal for first-time buyers, downsizers or investors.

The accommodation comprises an entrance hall, a bright and airy lounge, kitchen, two bedrooms, with the principal bedroom benefiting from an en-suite, along with a main bathroom. Externally, the property benefits from a single garage, allocated parking and access to communal gardens, enhancing both convenience and lifestyle.

Offered to the market with no onward chain, this is a fantastic opportunity to acquire a property in a highly desirable residential location.

Council Tax band: B

Tenure: Leasehold

EPC Energy Efficiency Rating: C

- 2nd Floor Apartment
- Two Bedrooms
- Bathroom & En-Suite
- Juliette Balcony
- Single Garage
- Sought After Development
- Allocated Parking
- No Onwards Chain



Entrance

Front door in to porch with doors leading into utility cupboard and hallway. Window to side.

Lounge

11' 10" x 15' 8" (3.60m x 4.77m)

French doors to Juliette balcony, window to side and open plan into kitchen.

Kitchen

11' 9" x 6' 6" (3.58m x 1.98m)

A range of eye and low level units incorporating a stainless steel sink and drainer unit, built in electric oven and hob with extractor hood over, integrated fridge freezer and built in breakfast bar table. Window to front and open plan into lounge.

Bedroom One

10' 2" x 9' 8" (3.10m x 2.95m)

Window to rear, door in to En-suite and built in double wardrobes.

En-Suite

6' 2" x 4' 5" (1.88m x 1.35m)

Three piece suite comprising shower cubicle with mixer shower over, pedestal wash hand basin and low level WC.

Bedroom Two

12' 0" x 7' 11" (3.65m x 2.41m)

Window to rear, built in desk and wardrobe.

Bathroom

6' 6" x 7' 5" (1.97m x 2.26m)

Three piece suite comprising panelled bath, vanity wash hand basic and low level WC. Window to front.

Garage


Single garage with up and over door, electrics and plenty of storage.



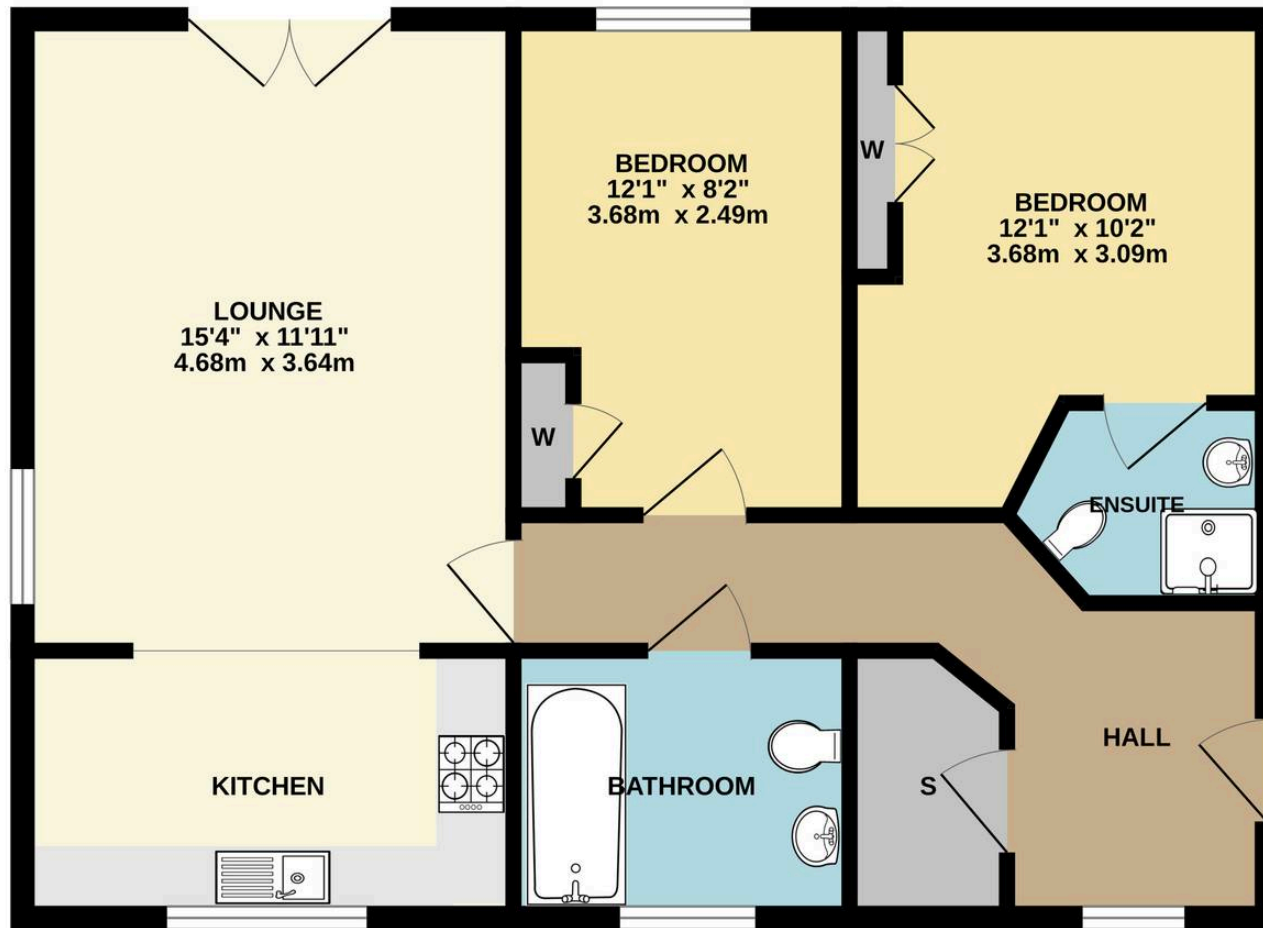




Energy Efficiency Rating

	Current	Potential
<i>Very energy efficient - lower running costs</i>		
(92+) A		
(81-91) B		
(69-80) C	70	70
(55-68) D		
(39-54) E		
(21-38) F		
(1-20) G		
<i>Not energy efficient - higher running costs</i>		
England, Scotland & Wales		EU Directive 2002/91/EC 

GROUND FLOOR





Victoria Estates & Property Management

49 Liverpool Road North, Burscough - L40 0SA

01704 897647 • tori@vepm.co.uk • <http://vepm.co.uk>

