



Greenacres Ring, Angmering, BN16 4BU

Freehold

A three bedroom terraced house • Two reception rooms • Walking distance to Angmering village • CHAIN FREE • Option to purchase a garage in the block for parking/storage • For more information visit the Cooper Adams website

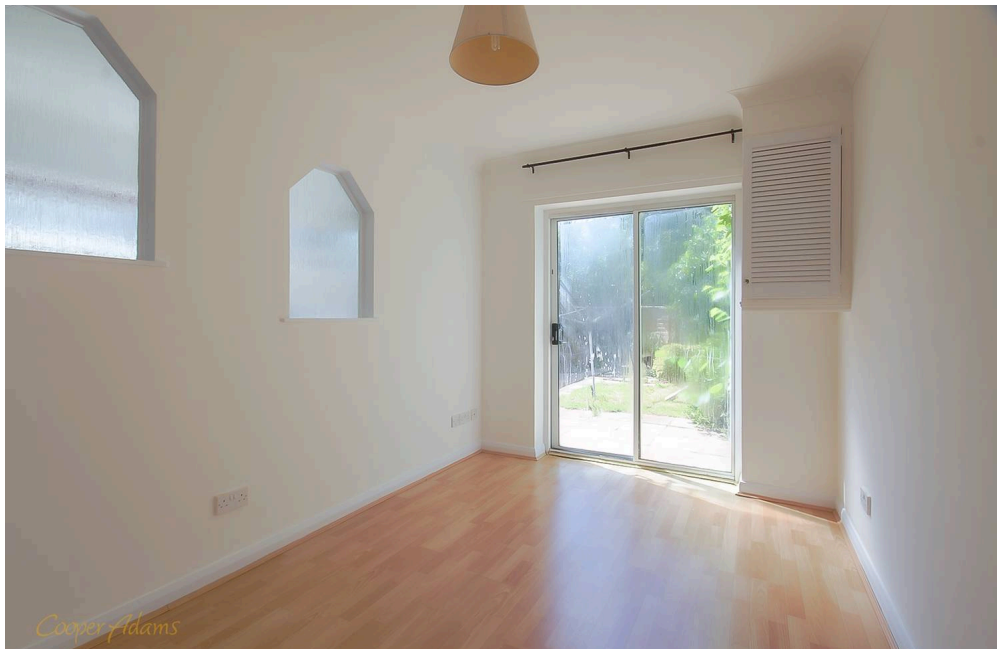
Cooper Adams

****NO CHAIN****

A well-proportioned three-bedroom terraced home, in need of modernisation, ideally situated within walking distance of Angmering village shops, cafés and local schools.

The property is entered via a porch leading into the entrance hall. The spacious living room benefits from useful understairs storage and flows through to the extended kitchen/breakfast room, which has direct access to the rear garden. A separate dining room also enjoys doors opening onto the garden. The ground floor is completed by a convenient cloakroom. Upstairs, there are three bedrooms, comprising two double bedrooms and one single bedroom, along with a family bathroom.

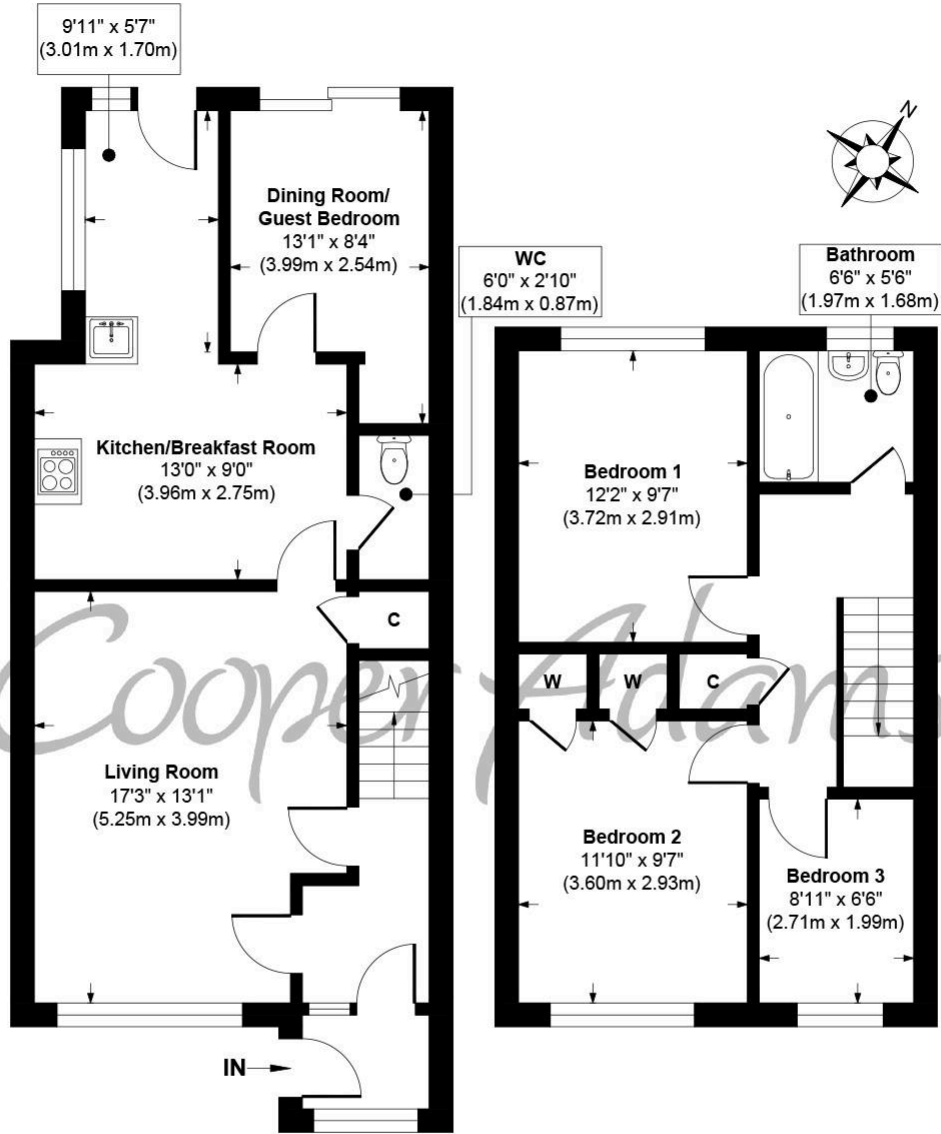
There is also the opportunity to purchase a garage within the nearby compound for an additional £20,000, providing valuable extra storage or secure parking.



Angmering, a charming village near the South Downs, offers shops, schools, a health club, and a golf course. Beaches are within 2 miles, and nearby shopping is available in Rustington and Worthing. Angmering station connects to London, Brighton, and more, with Gatwick 40 miles away and easy access to the A27 and A24 roads.

This property is "Legally Prepared." Cooper Adams has gathered key documents, including the title, plans, property forms, warranties, and EPC. Buyers must request these before offering.





Ground Floor
 Approximate Floor Area
 618 sq. ft
 (57.44 sq. m)

First Floor
 Approximate Floor Area
 451 sq. ft
 (41.93 sq. m)

Greenacres Ring, Angmering, BN16 4BU
Approx. Gross Internal Floor Area 1069 sq. ft / 99.37 sq. m

Illustration for identification purposes only, measurements are approximate, not to scale

Copyright © Cooper Adams



Material Information includes important facts that may affect a buyer's decision to view or buy, such as tenure, restrictions, utilities, construction, and other key details. Full information for this property is available at www.cooper-adams.com. We may offer buyer services and receive referral benefits – details on request. All content is copyright Cooper Adams. Details and floor plans are for guidance only and don't form part of any contract. Measurements are maximums including bays and alcoves. Floor plan sizes are approximate. Images, maps and plans are not to scale. Appliances/services not tested. Cooper Adams Estates Ltd, Bishopstone. Reg No: 07127482. VAT No: 982847172.