



jordan fishwick

14 Denewood Court, Queens Road, SK9
Guide Price £248,499



Denewood Court Wilmslow SK9 5HP

Guide Price £248,499




Jordan Fishwick are delighted to offer this well presented two bedroom ground floor apartment for sale with No Onward Vendor Chain. Denewood Court occupies a highly desirable location within easy walking distance of Wilmslow town centre, providing convenient access to an excellent range of shops, restaurants, cafés, and transport links. Accessed via a communal entrance, this well maintained ground-floor apartment offers generously proportioned and private accommodation throughout. Upon entering, the private entrance hallway provides a useful airing and storage cupboard and leads through to the main living spaces. The spacious living room enjoys a pleasant outlook over the lawned communal gardens and opens through to the adjoining dining room, which in turn provides direct access to the private terrace and gardens beyond. The refitted kitchen is fitted with a stylish range of base and wall units complemented by oak style work surfaces and incorporates a breakfast bar. The accommodation offers two well proportioned double bedrooms and completing the accommodation is a contemporary shower room with modern tiles, wash hand basin with fitted vanity, low level WC and shower cubicle. Externally, the private terrace offers a pleasant outlook over the beautifully maintained communal gardens and provides direct access to the garage and off road parking. The gardens are attractively landscaped with lawned areas creating a peaceful setting. Viewings essential.





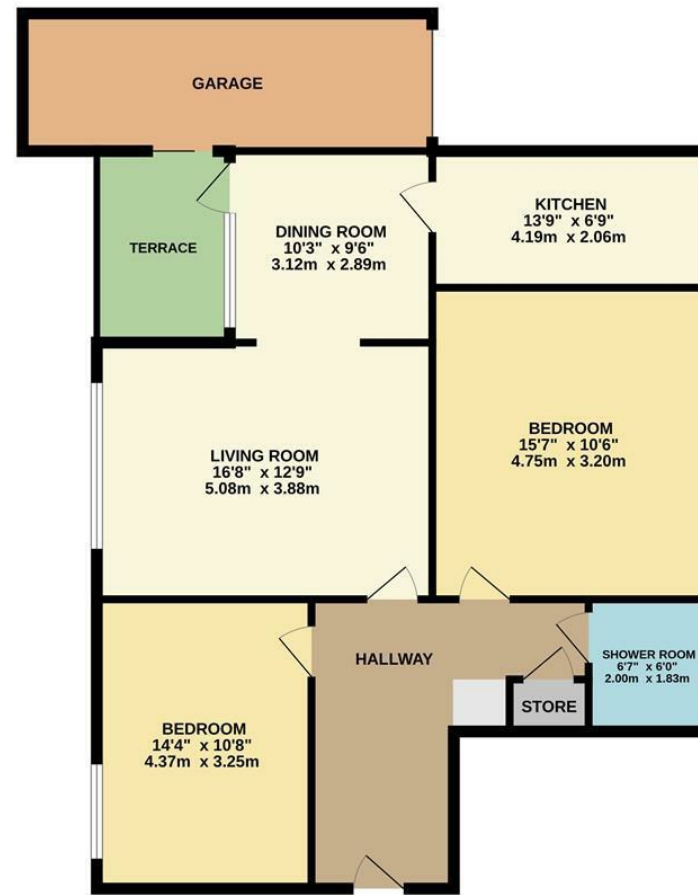
- No Chain
- Ground Floor Apartment
- Two Double Bedrooms
- Contemporary Shower Room
- Terrace
- Open Plan Living / Dining
- Modern Kitchen



Energy Efficiency Rating		
	Current	Potential
Very energy efficient - lower running costs		
(92 plus) A		
(81-91) B		
(69-80) C		
(55-68) D		68
(39-54) E	39	
(21-38) F		
(1-20) G		
Not energy efficient - higher running costs		
England & Wales		EU Directive 2002/91/EC 



GROUND FLOOR



Measurements are approximate. Not to scale. Illustrative purposes only.
Made with Metropix ©2025



These particulars are believed to be accurate but they are not guaranteed and do not form a contract. Neither Jordan Fishwick nor the vendor or lessor accept any responsibility in respect of these particulars, which are not intended to be statements or representations of fact and any intending purchaser or lessee must satisfy himself by inspection or otherwise as to the correctness of each of the statements contained in these particulars. Any floorplans on this brochure are for illustrative purposes only and are not necessarily to scale.

Offices at: Chorlton, Didsbury, Disley, Hale, Glossop, Macclesfield, Manchester Deansgate, Manchester Whitworth Street, New Mills, Sale, Wilmslow and Withington

36-38 Alderley Road, Wilmslow SK91JX
01625 532000

wilmslow@jordanfishwick.co.uk
www.jordanfishwick.co.uk