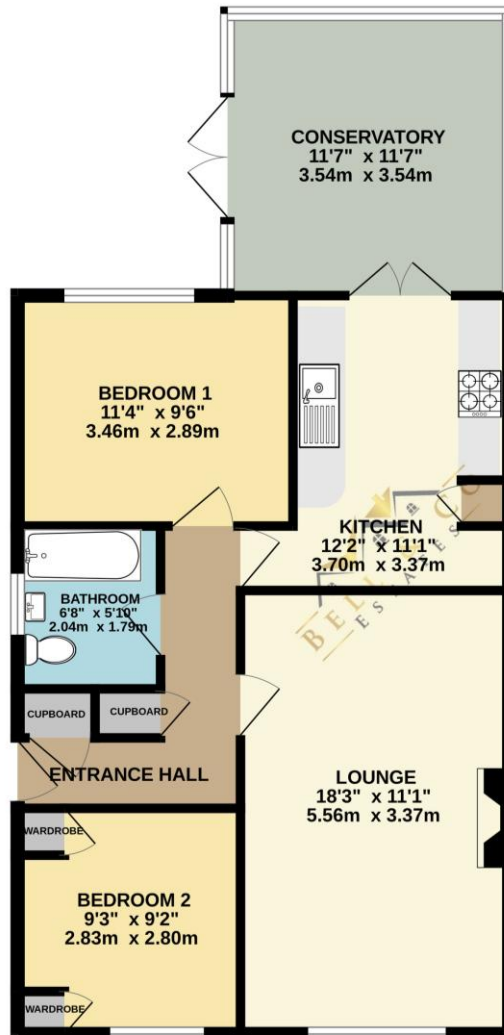




16 Meadow Close | Kiveton Park | Sheffield | S26 6SD

£227,500

Bell & Co Estates are thrilled to present this spacious two bedroom detached bungalow, tucked away in a sought-after residential area of Kiveton and ready to move straight into. Step inside through the welcoming entrance hall with plenty of cupboard space and discover a well-designed home with comfort and practicality at its heart. The bright and generous lounge, offering the perfect spot to relax or entertain, with plenty of natural light flooding the space. The modern fitted kitchen boasts ample cupboard, worktop space including integrated appliances, perfectly designed for both everyday living and entertaining, with direct access through to the bright and airy conservatory, a perfect place to relax and unwind. Both bedrooms are well-proportioned doubles — Bedroom One with views to the rear, while Bedroom Two features built-in wardrobes for convenience. The modern family bathroom is fitted with bath and overhead shower, wash basin, and WC. Outside, the property continues to impress — the rear garden offers a private space to enjoy, with patio, borders and planting opportunities. To the front, a neat garden and driveway provide off-road parking. Detached brick built garage with electricity internally. Ideally located close to local amenities, schools, transport links and green spaces, this bungalow offers both peace and convenience. Whether you're looking to downsize, invest, or find your forever home on one level, this beautifully maintained property ticks all the boxes. Contact Bell & Co Estates today to arrange your viewing — bungalows like this don't stay on the market for long!



Contact Details

79 Wales Road
Kiveton Park
Sheffield
South Yorkshire
S26 6RA

www.bellcoestates.com
info@bellcoestates.com
03333 580590

16 Meadow Close
Kiveton Park
SHEFFIELD
S26 6SD

Energy rating

C

Valid until
2 October 2035

Certificate number
2929-0111-7262-8993-6128

Property type Detached bungalow

Total floor area 59 square metres

Agents Note: Whilst every care has been taken to prepare these sales particulars, they are for guidance purposes only. All measurements are approximate are for general guidance purposes only and whilst every care has been taken to ensure their accuracy, they should not be relied upon and potential buyers are advised to recheck the measurements