



BYRNE ROAD, SW12

£799,999

Two double bedrooms
Two bathrooms
Victorian
Double fronted
Private entrance
Large private garden

@marshandparsons
marshandparsons.co.uk

MARSH &
PARSONS



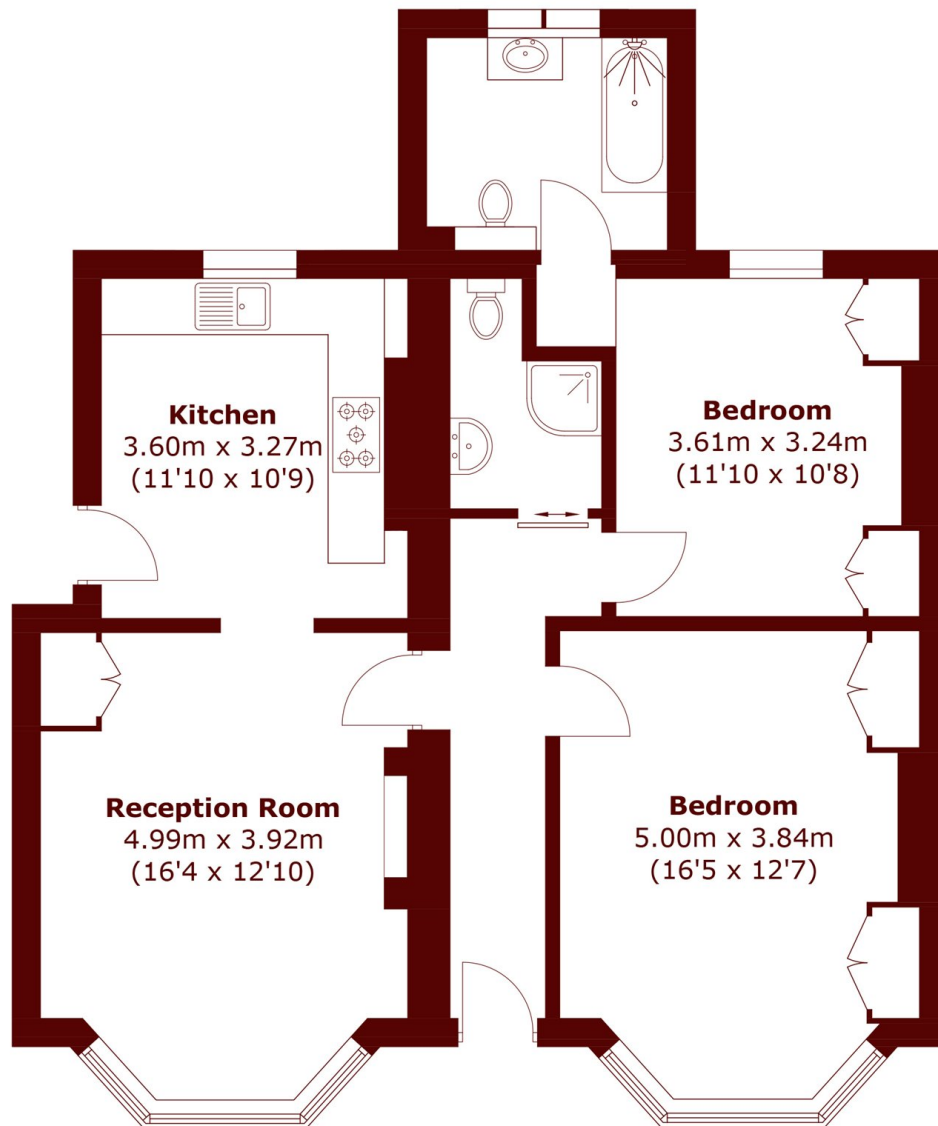
ABOUT THE PROPERTY

Through its own private entrance, this stunning double fronted raised ground floor Victorian apartment offers a spacious open kitchen living area, two double bedrooms, two bathrooms and an incredible private garden. There is a share of freehold and no onward chain.

Byrne Road provides easy access to both Tooting Bec Common and Balham High Road. Locally you will find some outstanding local restaurants, great pubs and a wide range of shops. Balham station is just a short walk with both Northern Line and National Railway services.



STEP INSIDE BYRNE ROAD



Raised Ground Floor

Total area (approx.): 82.7 sq. m (890.2 sq. ft)

Balham & Clapham South
020 7326 9920

Energy Rating: C We aim to make our particulars both accurate and reliable. However, they are not guaranteed; nor do they form part of an offer or contract. If you require clarification on any points then please contact us, especially if you're traveling some distance to view. Please note that appliances and heating systems have not been tested and therefore no warranties can be given as to their good working order

MARSH &
PARSONS