



Taylor Place, London, E3

BUTLER  STAG



Short Let 2 Months
One bedroom apartment
offering stunning views
from the 12th floor and
an abundance of natural
light through its floor-
to-ceiling windows.



- Short Let of 2 Months
- 12th Floor with a Private Balcony
- Close to Transport Links
- Part Furnished
- One Bedroom Apartment
- Secure Development with Concierge
- Westfield Stratford & Plenty of Parks Nearby
- Available Immediately

Featuring a large open-plan fitted kitchen / living-dining area, this versatile space is perfect for relaxation and entertaining and opens out onto a private balcony with far-reaching views.

Completed by a generously-sized bedroom and a contemporary bathroom, this wonderful property is set within a gated development with a concierge service.

The location is also ultra-convenient, connecting you to Canary Wharf and the City, as well as local hotspots like Victoria Park, the historic Roman Road and the Westfield shopping centre at Stratford.

Offered part furnished and available now for a 2 month let.

EPC Rating B
 Council Tax Band C





Fondant Court

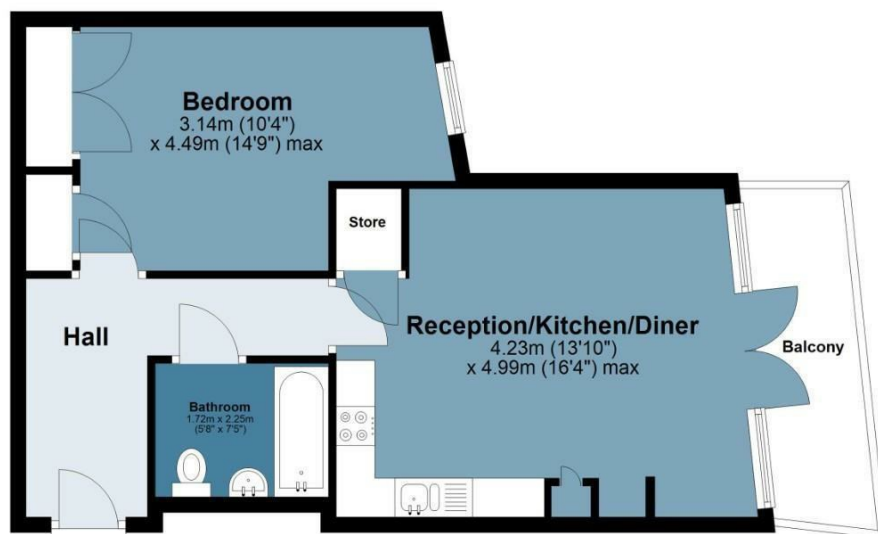
Approx. Gross Internal Area 49.5 Sq M (533.2 Sq Ft)

BUTLER & STAG



Twelfth Floor

Approx. 49.5 sq. metres (533.2 sq. feet)



Measurements are approximate and for illustration purposes only. While we do not doubt the accuracy and completeness, we advise you conduct a careful independent assessment of the property to determine monetary value.
© @modephoto.uk www.modephoto.co.uk

IMPORTANT NOTICE - These particulars have been prepared in good faith and they are not intended to constitute part of an offer or contract. We have not performed a structural survey on this property and the services, appliances and specific fittings have not been tested. All photographs, measurements, floor plans and distances referred to are given as a guide and should not be relied upon.

BUTLER & STAG

☎ 020 8102 1236

🏠 508 Roman Road, Bow, London, E3 5LU

✉ bow@butlerandstag.com

www.butlerandstag.uk