

Houghton Street
Millfield
Sunderland
SR4 7DY



Houghton Street

£675 Per Month

INTRODUCTION

VERY WELL PRESENTED AND SPACIOUS 1 DOUBLE BED UNFURNISHED MID TERRACE.

ENTRANCE HALL

Large spacious entrance hall which formally had a staircase leading to the loft which has now been removed, large double radiator, electric meter and gas meter. 1 door leading to double bedroom, 1 door leading to lounge.

BEDROOM 1

Carpet flooring, 1 double radiator, front facing white uPVC double-glazed window. This is a very spacious well-presented room.

LOUNGE

Carpet flooring, additional large double radiator, 2 white uPVC double-glazed windows looking out over rear courtyard, open plan door leading to kitchen area.

KITCHEN

A lovely light kitchen extension with white uPVC double-glazed window overlooking the rear courtyard, huge sky light built into the ceiling allowing lots of light to flood into this lovely space, carpet flooring. Fitted kitchen with a range of wall and floor units in a cream finish with natural woodwork surfaces. Ample space for appliances as required. Open plan doorway leading to rear lobby.

REAR LOBBY

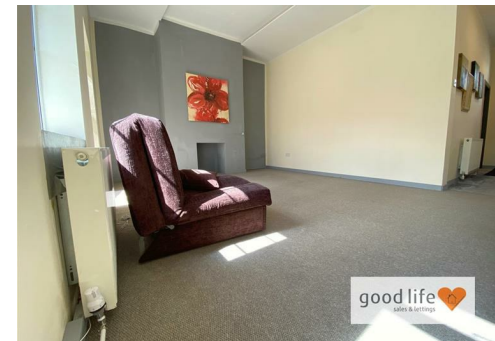
Vinyl flooring, white uPVC double-glazed door leading to rear courtyard, door leading into bathroom.

BATHROOM

Tiled flooring, white sink built into vanity unit with chrome tap, toilet with low level cistern, white corner shower cubicle with chrome shower fed from the main combi boiler system. The walls are completely finished in uPVC cladding as are the ceilings. White uPVC double-glazed window facing into the rear courtyard. Extractor fan.

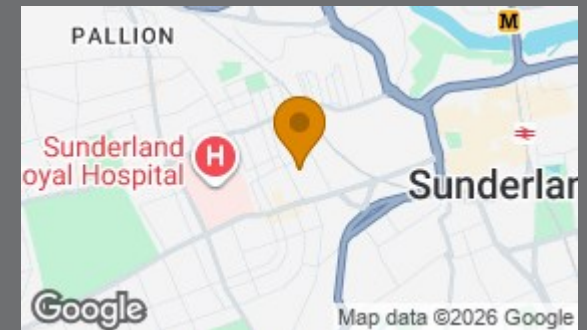
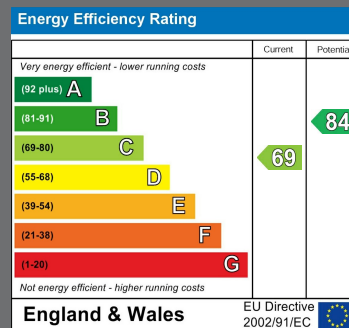
EXTERNALLY

Has timber gated access wide enough to accommodate a vehicle for off street parking.



Local Authority
Sunderland

Council Tax Band
A



Agents Note: Whilst every care has been taken to prepare these particulars, they are for guidance purposes only. All measurements are approximate and are for general guidance purposes only and whilst every care has been taken to ensure their accuracy, they should not be relied upon and potential buyers/tenants are advised to recheck the measurements



Contact

0191 565 6655

info@goodlifehomes.co.uk

www.goodlifehomes.co.uk

Good Life Homes - Sales

46 Windsor Terrace
Sunderland
Tyne and Wear
SR2 9QF



good life 
sales & lettings