



Shearwater Avenue, Astley
Manchester



£325,000

26 Shearwater Avenue

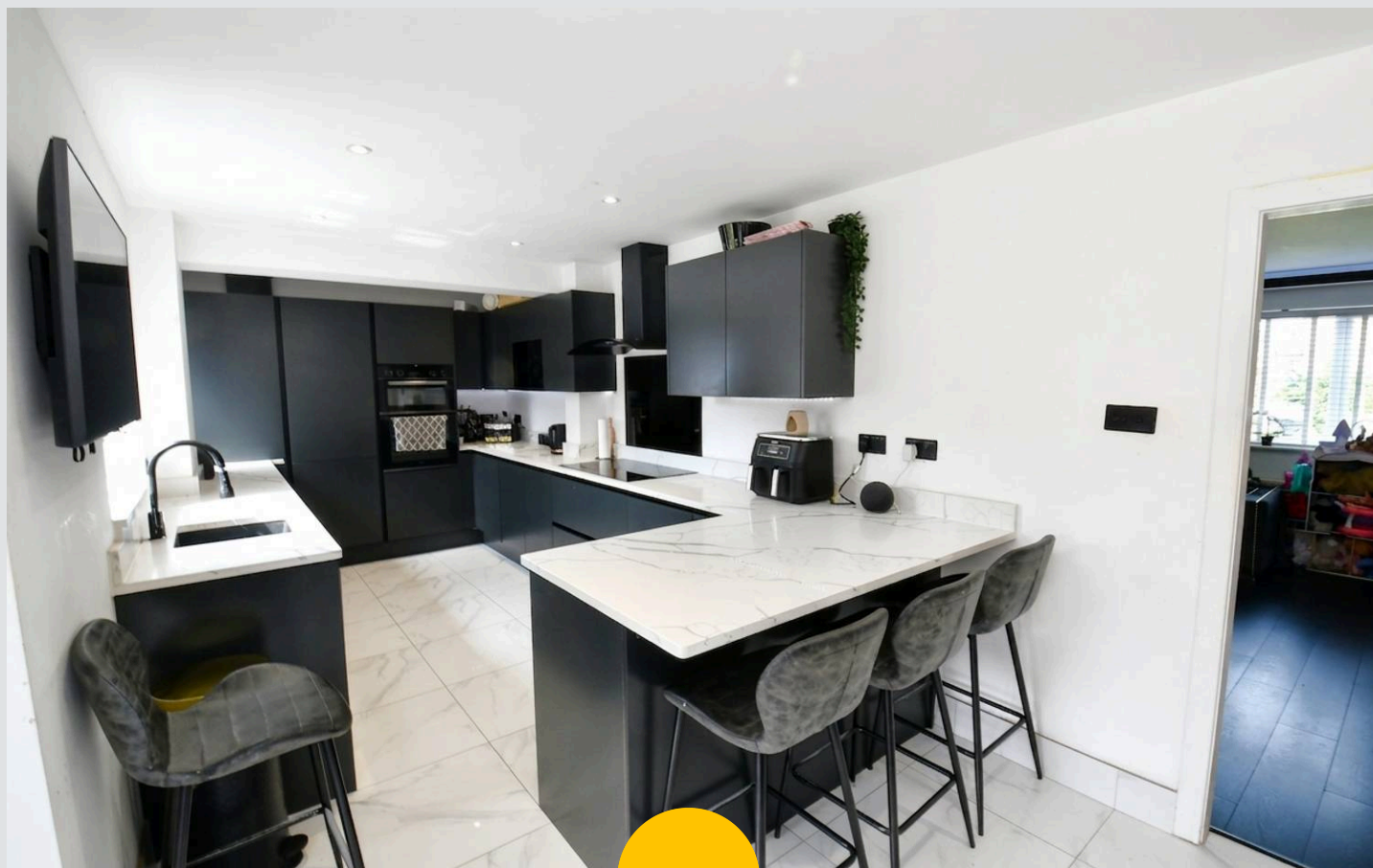
Astley, Manchester

Stylish Three Bedroom Detached Property Boasting a Contemporary Four-Piece Bathroom, a Modern Kitchen Diner and an Extra Reception Room for use as an Office, Play Room or Beauty Room!

Council Tax band: D

Tenure: Leasehold

- Stylish Three Bedroom Detached Property, Tastefully Decorated Throughout
- Situated in a Popular Area Close to Astley Street Park and Tyldesley Town Centre
- Within Walking Distance of the Guided Busway, which Provides Direct Access into Manchester City Centre
- Spacious Family Lounge and a Beauty Room/Office/Playroom
- Beautifully Presented, Modern Kitchen Diner with Plenty of Storage and Patio Doors to the Rear Letting Natural Light in
- High Specification, Contemporary Four-Piece Family Bathroom
- Three Well-Proportioned Bedrooms, with a Walk-in Wardrobe to the Main Bedroom
- Driveway for Off-Road Parking to the Front
- Generously-Sized Gardens to the Front and Rear
- Close to Transport Links to Manchester and Warrington



HILLS



Porch

Lounge

15' 7" x 11' 9" (4.74m x 3.59m)

Beauty Room/Office

14' 5" x 5' 5" (4.40m x 1.64m)

Kitchen Diner

21' 6" x 8' 9" (6.56m x 2.66m)

Landing

Bedroom One

15' 7" x 8' 11" (4.74m x 2.73m)

Walk-In Wardrobe

5' 9" x 5' 5" (1.76m x 1.64m)

Bedroom Two

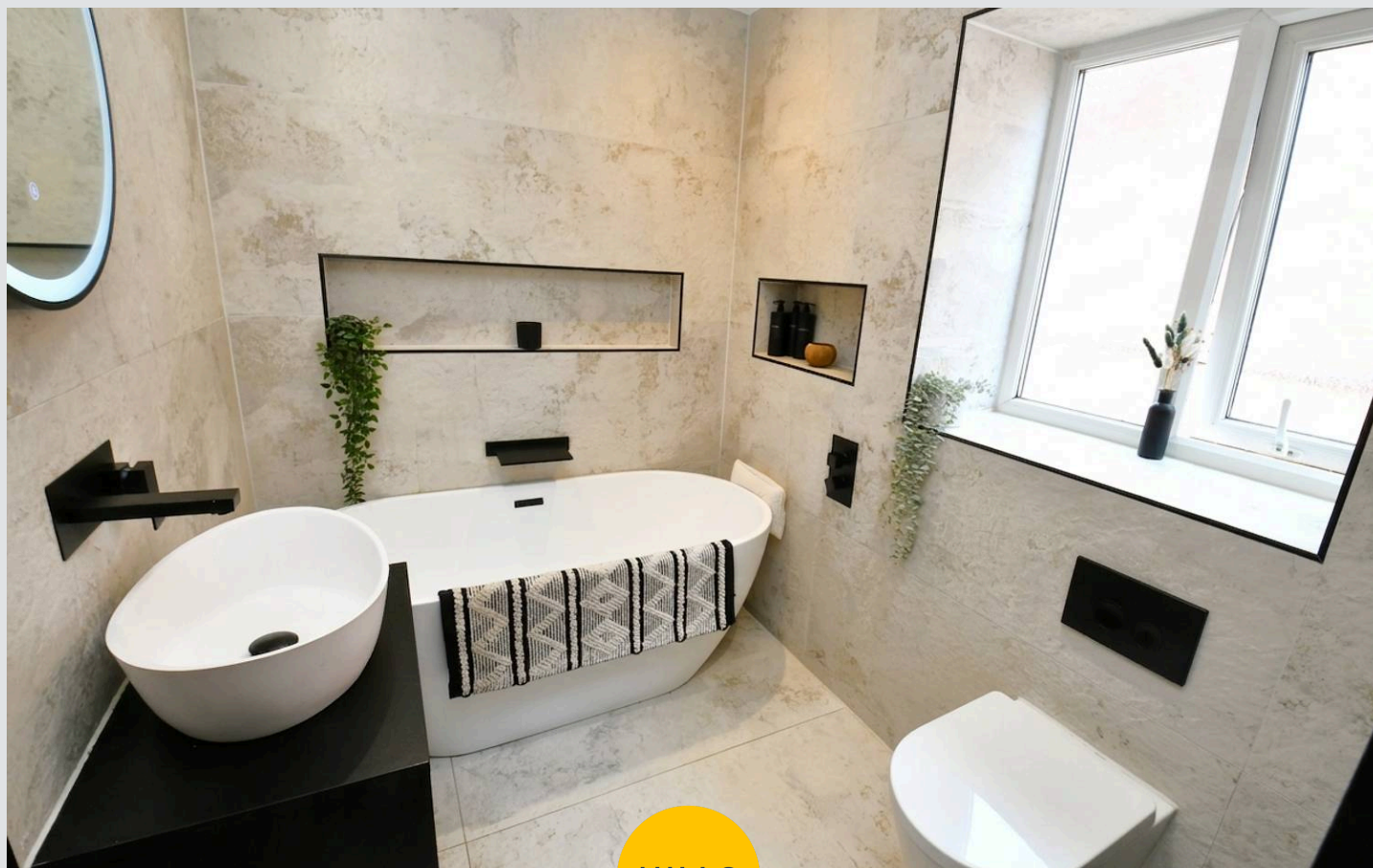
11' 7" x 7' 8" (3.52m x 2.33m)

Bedroom Three

9' 8" x 8' 1" (2.94m x 2.47m)

Bathroom

9' 7" x 5' 6" (2.91m x 1.67m)



Porch

Lounge

15' 7" x 11' 9" (4.74m x 3.59m)

Beauty Room/Office

14' 5" x 5' 5" (4.40m x 1.64m)

Kitchen Diner

21' 6" x 8' 9" (6.56m x 2.66m)

Landing

Bedroom One

15' 7" x 8' 11" (4.74m x 2.73m)

Walk-In Wardrobe

5' 9" x 5' 5" (1.76m x 1.64m)

Bedroom Two

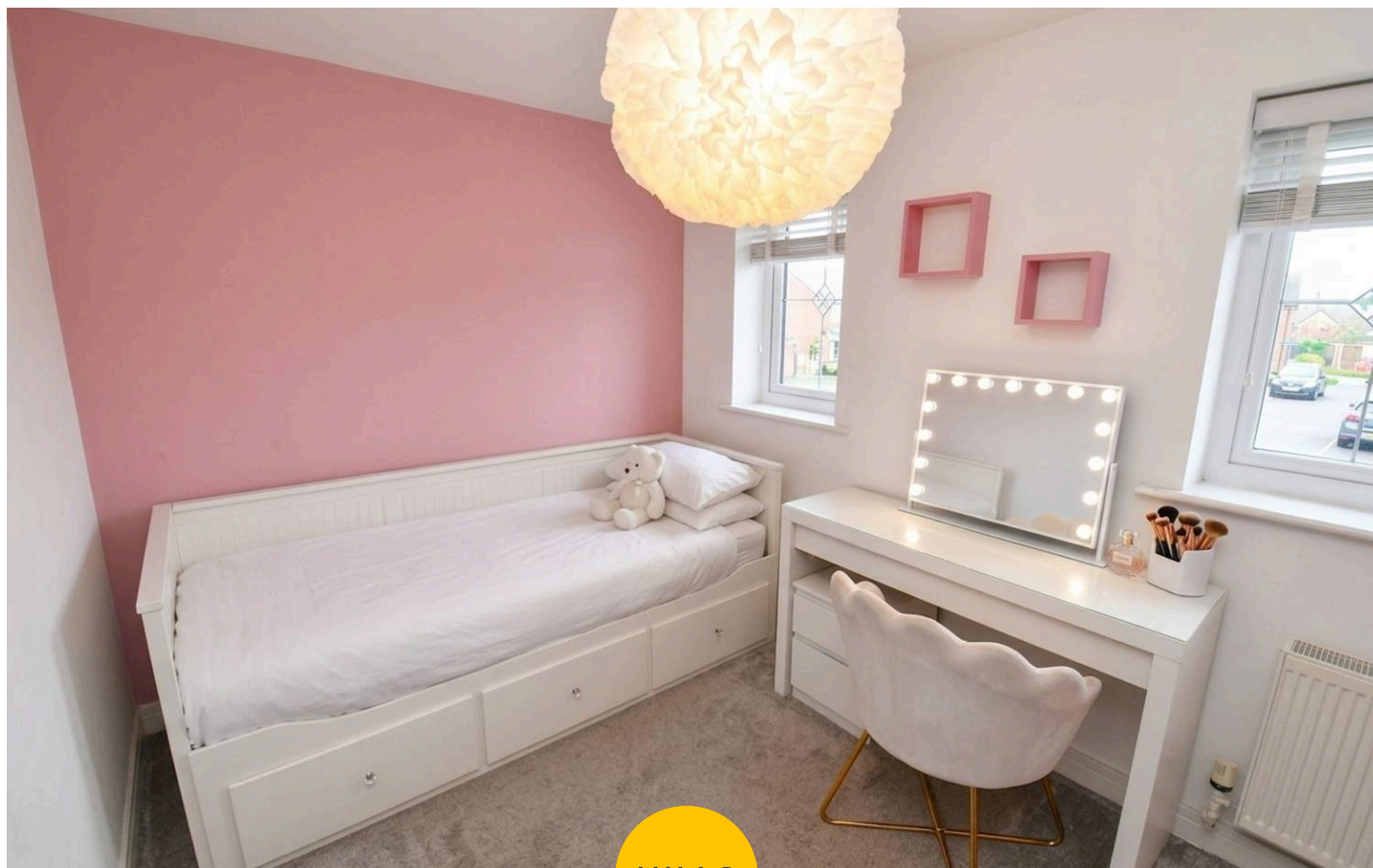
11' 7" x 7' 8" (3.52m x 2.33m)

Bedroom Three

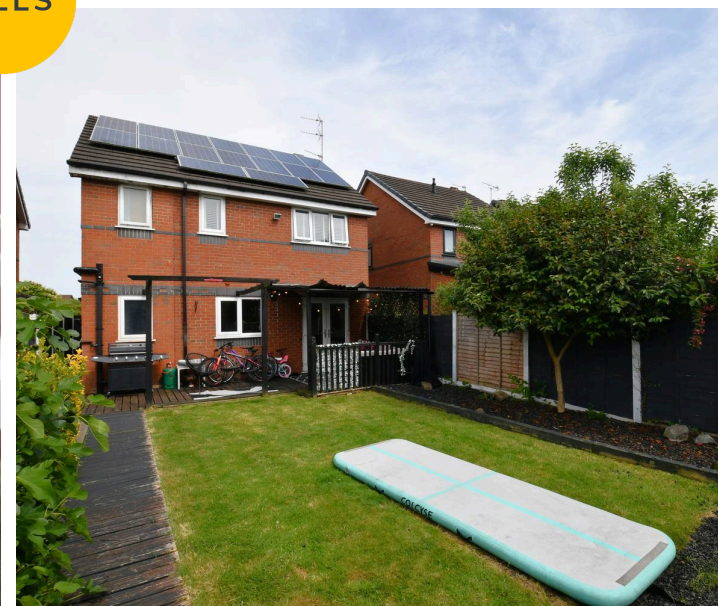
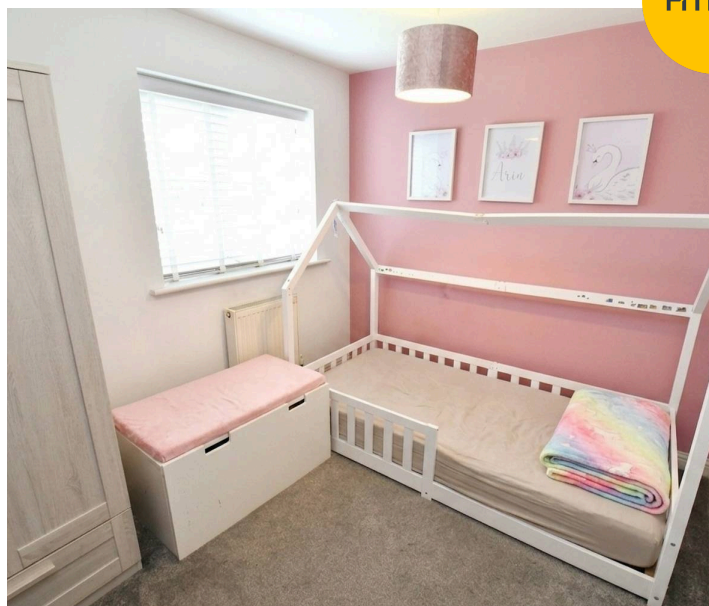
9' 8" x 8' 1" (2.94m x 2.47m)

Bathroom

9' 7" x 5' 6" (2.91m x 1.67m)



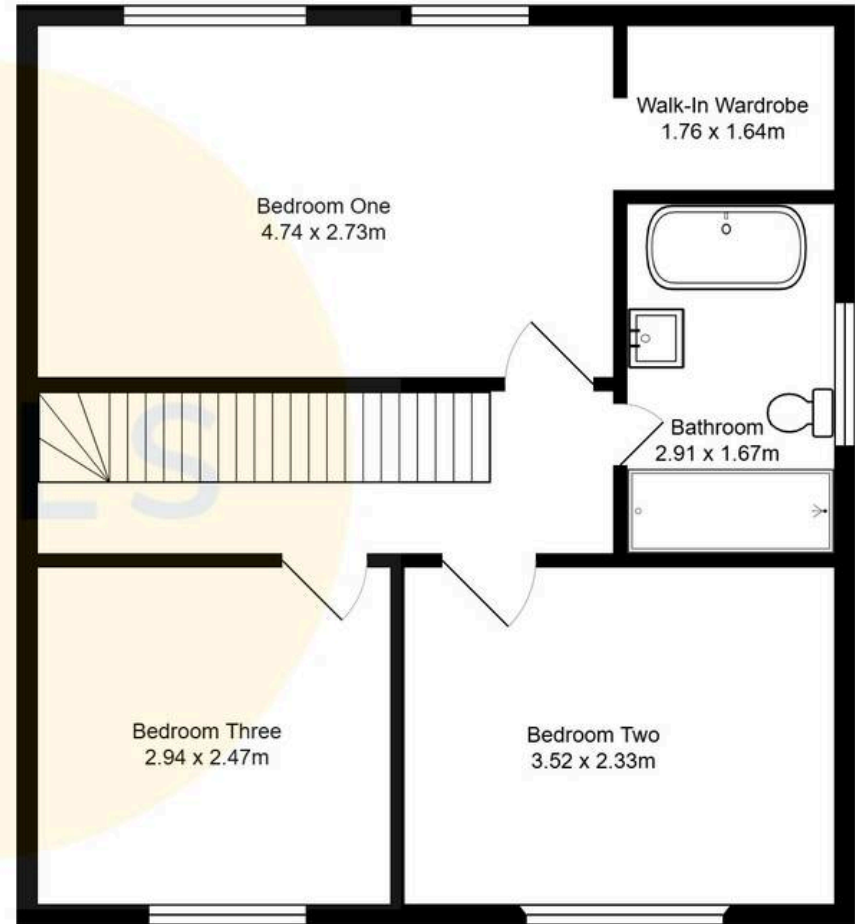
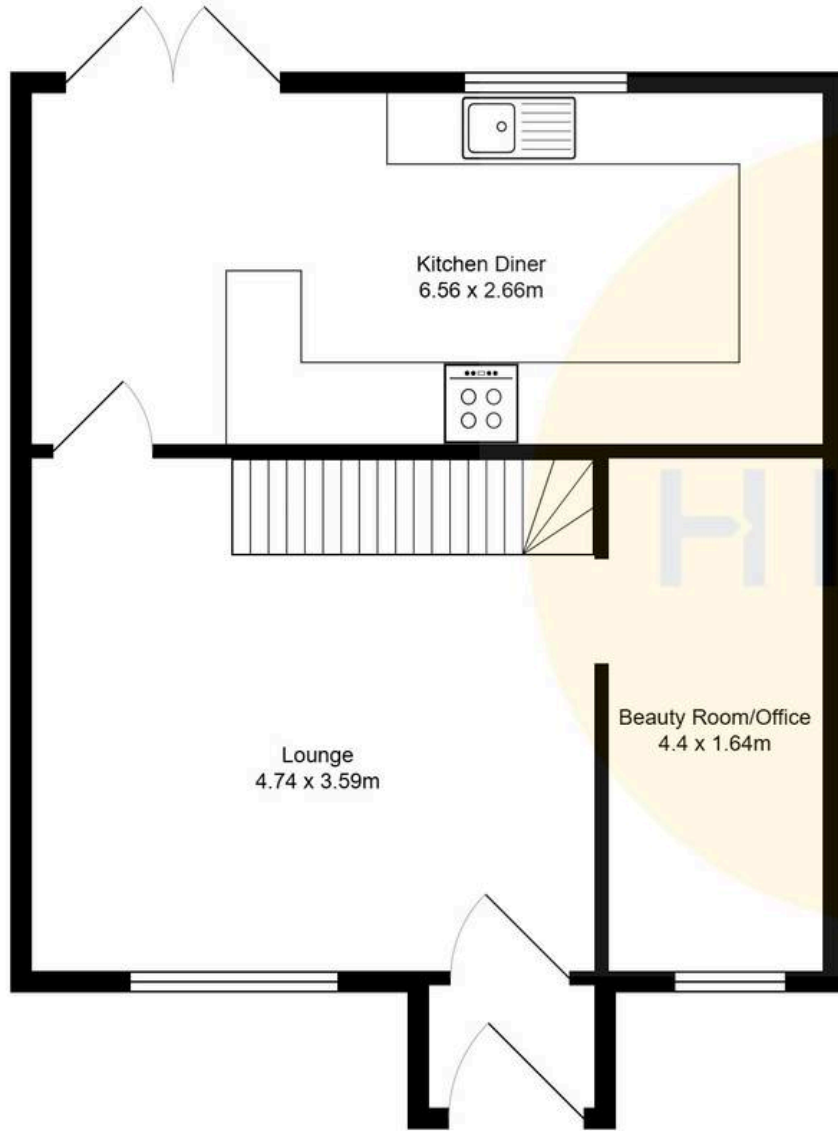
HILLS





HILLS







Hills

39 Johnson Street, Tyldesley – M29 8AB

01942 938600

tyldesley@hills.agency

www.hills.agency/



By law, we are required to conduct anti-money laundering checks on all potential buyers and sellers. In line with HMRC guidelines, our trusted partner, Coadjute, will securely manage these checks on our behalf. A non-refundable fee of £45 + VAT per person will apply, and Coadjute will handle the payment. Once an offer is accepted, Coadjute will send a secure link for you to complete the biometric checks. These checks must be completed before we can send the memorandum of sale to all parties. PLEASE NOTE: The Agent has not tested any equipment, fixtures, fittings or services so cannot verify that they are in working order or fit for the purpose. References to the properties tenure are based on information supplied by the seller. You are advised to check the availability of this property before travelling any distance to view. Every effort has been made to ensure these particulars are correct and not misleading but their accuracy is not guaranteed nor do they form part of any contract.