



1 Oakley Close

Hemlington, Middlesbrough, TS8 9PX

£160,000



Igomove is delighted to present this exceptional four-bedroom end-terrace home on the ever-popular Oakley Close, Hemlington - a property that has been comprehensively upgraded throughout to an outstanding standard, with every detail carefully considered to create a stylish, modern family home ready to move straight into.

Occupying a generous corner position with attractive open green surroundings, this beautifully presented property offers spacious internal accommodation and benefits from a landscaped south-west facing rear garden, complete with new fencing, artificial turf and private entertaining space, ideal for enjoying afternoon and evening sun.



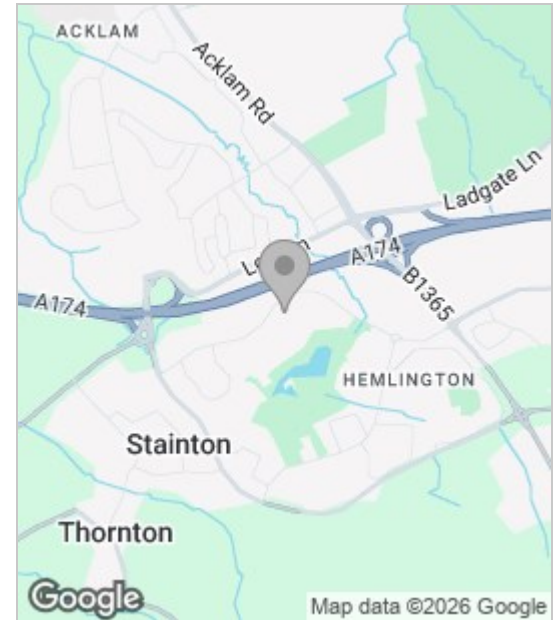
Upon entering via the porch, a welcoming hallway immediately showcases the quality of finish found throughout the home, featuring contemporary panelling, upgraded flooring and modern oak-style internal doors. To the front elevation is a spacious 15'6 lounge, tastefully decorated and centred around a feature media wall and electric fire, creating a warm and inviting family living space.

To the rear of the property is the impressive open-plan kitchen/dining room, measuring over 15 feet, fitted with sleek high-gloss cabinetry, integrated appliances, contemporary work surfaces and ample space for family dining - the true heart of the home. The ground floor also benefits from a conveniently positioned modern cloakroom/WC.

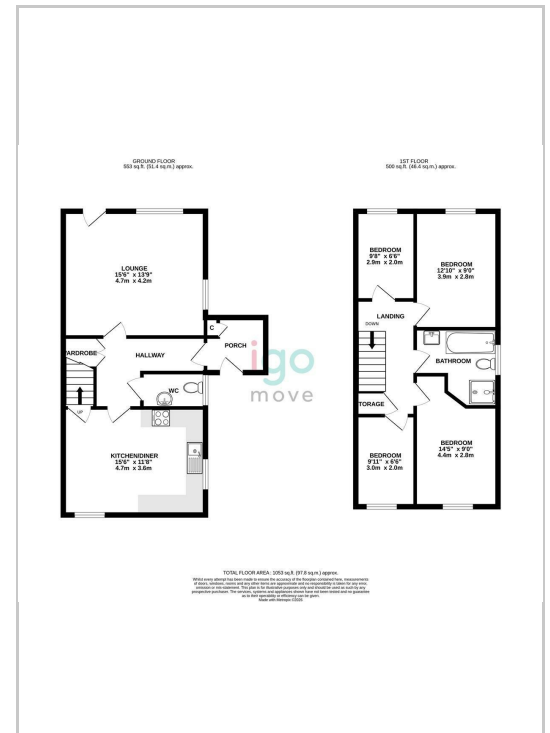
The first floor offers four bedrooms, providing flexible accommodation ideal for growing families, home working or guest space. Completing the upper floor is a luxuriously upgraded family bathroom, fitted with a freestanding bath, separate walk-in shower and high-end contemporary finishes.

Externally, this end-terrace property enjoys a sizeable plot with enclosed landscaped gardens, newly installed fencing providing privacy, and a sought-after south-west facing aspect. Positioned within a popular residential area close to schools, amenities, transport links and green spaces, this property represents a rare opportunity to purchase a fully modernised family home ready to move straight into. Make this home your own and book your viewing today. Igomove are open 7 days a week.

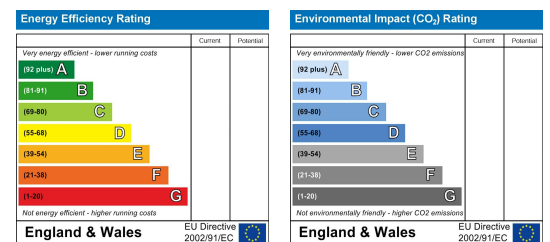
Area Map



Floor Plan



Energy Efficiency Graph



These particulars, whilst believed to be accurate are set out as a general outline only for guidance and do not constitute any part of an offer or contract. Intending purchasers should not rely on them as statements of representation of fact, but must satisfy themselves by inspection or otherwise as to their accuracy. No person in this firm's employment has the authority to make or give any representation or warranty in respect of the property.