

## Delancey Street, NW1

£540,000

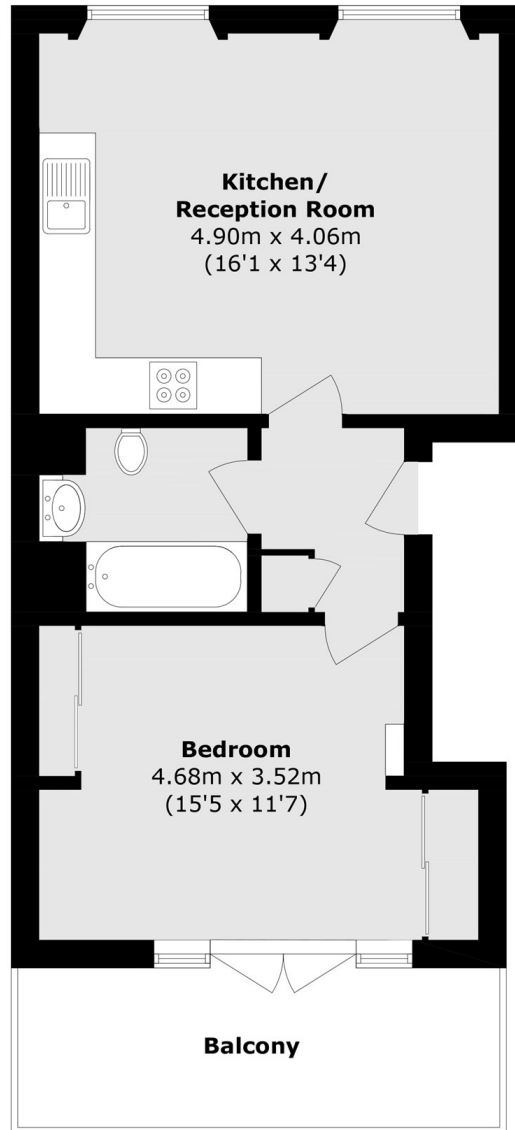
A stunning one double bedroom apartment in a Georgian building. The open plan living room combines the traditional feel of high ceilings and sash windows. Patio doors in the bedroom lead to a south-west facing balcony.

The apartment is two hundred yards from Camden High Street and less than half a mile from Camden Town tube station (Northern line). Regents Park is a short stroll away in the other direction.

### Features

- One Double Bedroom
- Share of Freehold
- Modern Kitchen
- High Ceilings
- Large Windows
- Chain Free

# Delancey Street, London, NW1



Total area (approx.): 43.0 sq. m (462.8 sq. ft)

Balcony (approx.): 9.3 sq. m (100.1 sq. ft)