



ROB LETTS

exp^{UK}

Beckside, Elvington

£375,000

4 1 1



An immaculately presented four-bedroom detached family home located within the highly desirable village of Elvington.

Beautifully maintained throughout, this move-in ready property offers a superb balance of modern open-plan living and cosy family space. The standout kitchen diner features stylish Shaker-style units, integrated Neff appliances, quality worktops, porcelain tiled flooring, and bi-fold doors opening directly onto the landscaped rear garden, creating a perfect entertaining space all year round.

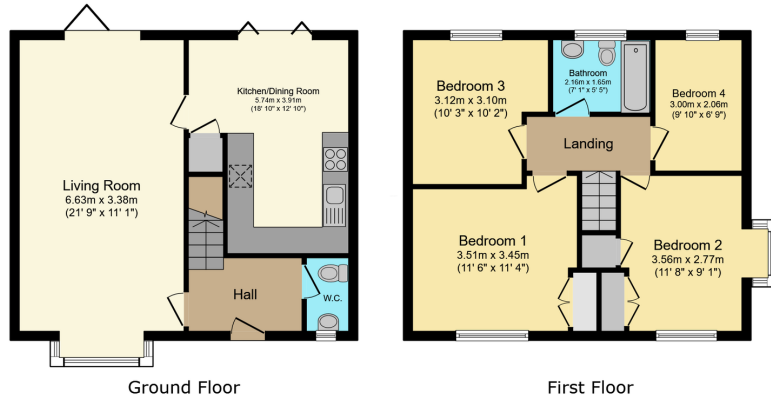
The spacious living room enjoys oak flooring, a feature log-burning stove, and additional bi-fold doors bringing in fantastic natural light.

Upstairs are four well-balanced bedrooms, two benefiting from fitted wardrobes, alongside a stunning contemporary family bathroom.

Externally, the property enjoys beautifully landscaped gardens with an extensive Indian stone patio, lawned areas, raised vegetable beds, and generous off-road parking leading to a garage store with utility space.

Set within one of York's most popular villages, Elvington offers excellent local amenities, countryside walks, highly regarded schooling including Fulford School catchment, and easy access into York city centre.

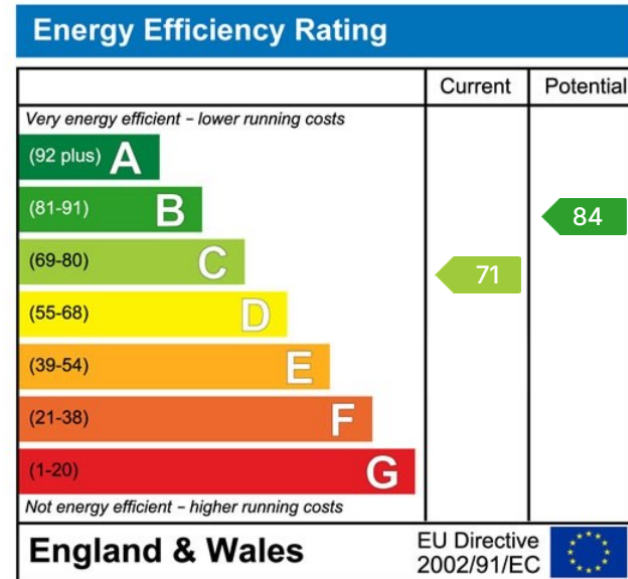




Total floor area: 101.8 sq.m. (1,096 sq.ft.)

This floor plan is for illustrative purposes only. It is not drawn to scale. Any measurements, floor areas (including any total floor area), openings and orientations are approximate. No details are guaranteed, they cannot be relied upon for any purpose and do not form any part of any agreement. No liability is taken for any error, omission or misstatement. A party must rely upon its own inspection(s). Powered by www.Propertybox.io

- Immaculate four-bedroom detached family home
- Stunning open-plan kitchen diner
- Bi-fold doors opening onto landscaped gardens
- Feature log-burning stove in living room
- Oak flooring and porcelain tiled flooring
- Integrated Neff appliances and induction hob
- Four well-balanced bedrooms
- Extensive Indian stone patio and raised beds
- Sought-after Elvington village location within Fulford School catchment
- When enquiring about this property please quote ref: RL0918



ROB LETTS



07538 298 866



robletts.exp.uk.com



rob.letts@exp.uk.com