



Monarch Court

Lyttelton Road, N2

Asking Price £525,000

Offered chain free, a large four bedroom second floor flat comprising over 1,100 square feet of accommodation including a south facing reception room.

The property is situated in Monarch Court, a popular mansion block with the benefit of a communal garden and being located close to Lyttelton Playing Field. Sole agent.

CHESTERTONS



Monarch Court

Lyttelton Road, N2

- Second floor flat
- 1,100 square feet
- South facing reception
- Four bedrooms
- One bathroom
- Communal garden



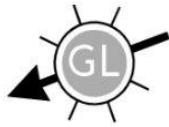
Tenure: Leasehold 949 years remaining
Service Charge: £400 per month
Ground Rent: £0
Local Authority: Barnet
Council Tax Band: E

Score	Energy rating	Current	Potential
92+	A		
81-91	B		
69-80	C		79 C
55-68	D	63 D	
39-54	E		
21-38	F		
1-20	G		

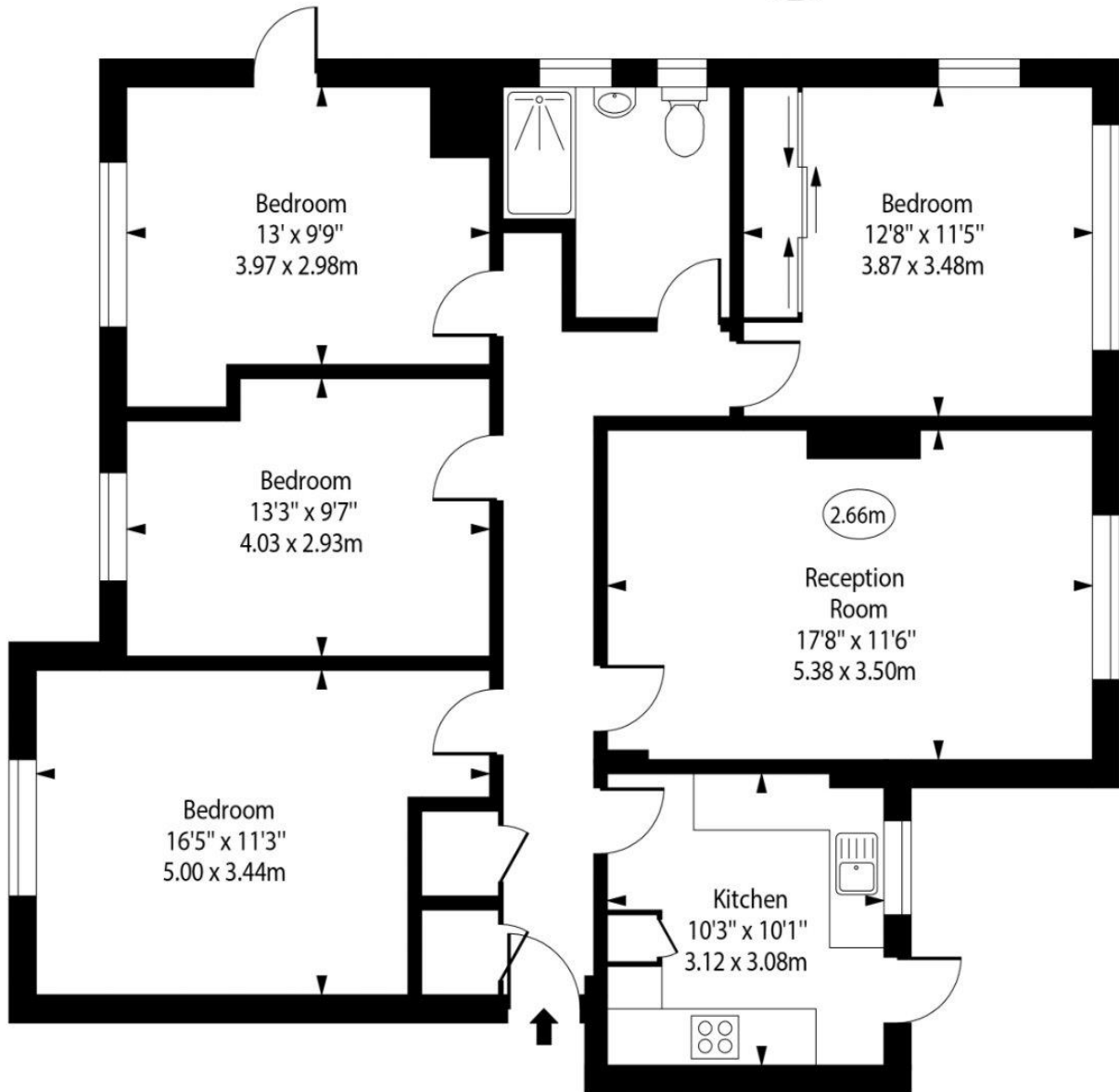
Chestertons Hampstead Sales

55-56 Hampstead High Street
Hampstead
NW3 1QH
hampstead@chestertons.co.uk
020 7794 3311
chestertons.co.uk

Monarch Court,
Lyttelton Road, N2



○ - Ceiling Height



Second Floor

Approx Gross Internal Area 1100 Sq Ft - 102.19 Sq M

Every attempt has been made to ensure the accuracy of the floor plan shown. However, all measurements, fixtures, fittings, and data shown are approximate interpretations and for illustrative purposes only. Measured according to the RICS. Not To Scale.

www.goldlens.co.uk
Prepared for Chestertons
Ref. No. 030342.1WI

