



114

enfields

Enfields Estate  
114 Enfields Estate  
Banbury, Oxfordshire, OX45 8AN  
023 8084 8210  
enfields@enfields.co.uk

Honeysuckle Road, Southampton, SO16 3BW

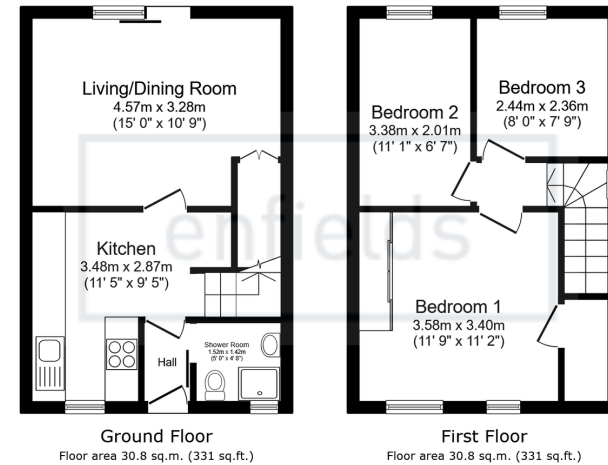
Guide Price £250,000

🛏 3 🚿 1 🚗 1



- No Forward Chain
- Three Bedrooms
- Driveway Parking
- Lounge/Diner
- End Of Terrace
- South Facing Rear Garden
- In Need Of Modernisation
- Kitchen/Breakfast Room





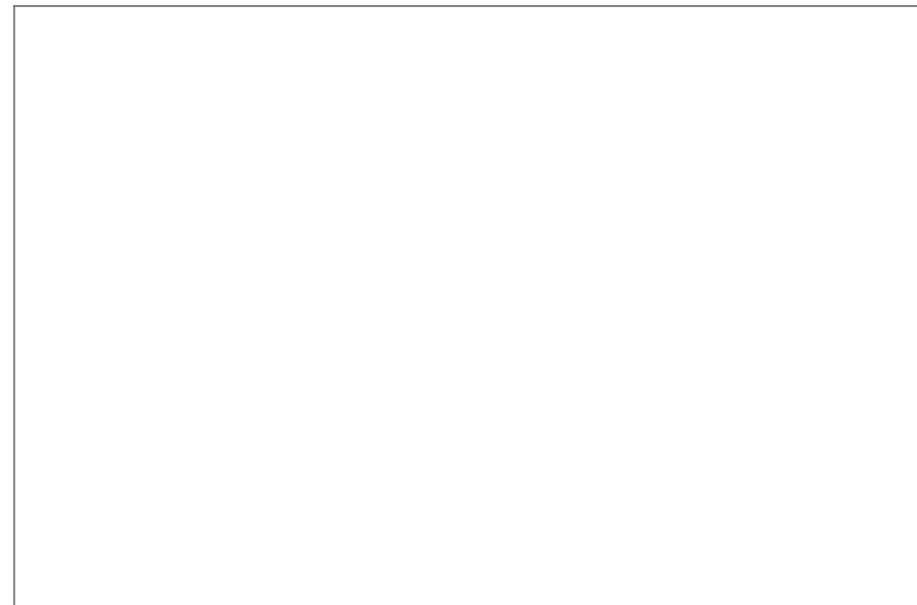
Total floor area: 61.5 sq.m. (662 sq.ft.)

This floor plan is for illustrative purposes only. It is not drawn to scale. Any measurements, floor areas (including any total floor area), openings and orientations are approximate. No details are guaranteed, they cannot be relied upon for any purpose and do not form any part of any agreement. No liability is taken for any error, omission or misstatement. A party must rely upon its own inspection(s). Powered by www.Propertybox.io



**NO FORWARD CHAIN**

Enfields are pleased to offer to the market this three bedroom end terrace house situated in a popular location with south facing rear garden, available for sale with no forward chain and in need of some modernisation.



[www.enfields-southampton.co.uk](http://www.enfields-southampton.co.uk)



It is Enfields policy to respect any sole agency currently in force and we would not be able to commence marketing until this has expired or been terminated. If you fail to terminate any previous agreement you could be liable for two sets of fees. Enfields Hythe is a trading name of YTF LTD Registered office: 345 Shirley Road, Southampton, Hampshire, England, SO15 3JD. Company Registration No: 10459987. VAT Registration No: 281 2975 81.

Enfields Lettings - Embley Management LTD T/A Enfields. Registered Address: 345 Shirley Road, Southampton, Hampshire, England, SO15 3JD. Company Registration No: 14847604. VAT Registration No: 439 8546 45.