



Pleasant Terrace, St Just TR19

£280,000

🛏 2 🍷 1 🚗 1



With an unreasonably beautiful outlook across fields toward the glistening sea on the horizon, this cute cottage has a host of delightful, original features throughout! There is scope to develop or adapt the rear garden to suit the buyer's individual needs!



Key Features

- TWO DOUBLE BEDROOM COTTAGE
- ON THE APTLY NAMED PLEASANT TERRACE
- SEA VIEWS ACROSS OPEN FIELDS
- PLETHORA OF ORIGINAL FEATURES
- UNSPOILT INTERNALLY AND EXTERNALLY
- UPVC DOUBLE GLAZING THROUGHOUT
- NO ONWARD CHAIN / CHAIN FREE
- TRAFFIC FREE LOCATION CLOSE TO TOWN
- EPC - E
- COUNCIL TAX BAND - A

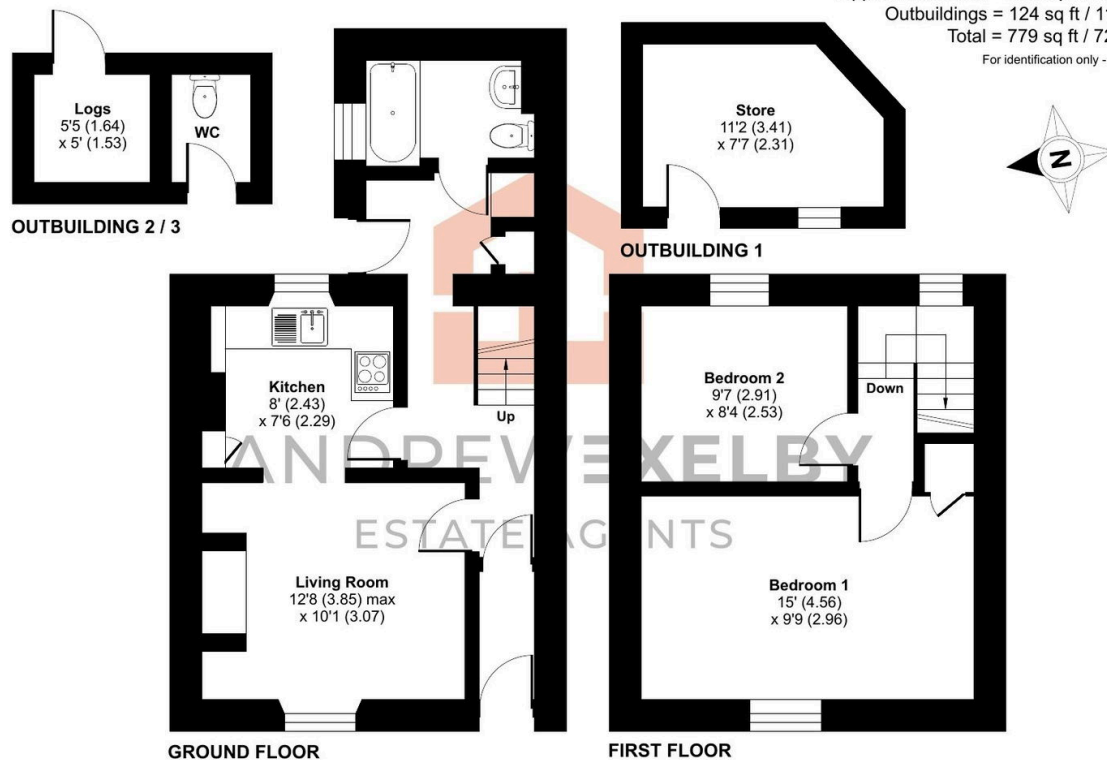
Pleasant Terrace, St. Just, Penzance, TR19

Approximate Area = 655 sq ft / 60.8 sq m

Outbuildings = 124 sq ft / 11.5 sq m

Total = 779 sq ft / 72.3 sq m

For identification only - Not to scale



Floor plan produced in accordance with RICS Property Measurement 2nd Edition, Incorporating International Property Measurement Standards (IPMS2 Residential). © nchecom 2025. Produced for Andrew Exelby Estate Agents. REF: 1309963