



*jordan fishwick*

Riversett Cottages, Hyde Bank Road New



## Riversett Cottages, Hyde Bank Road New Mills High Peak SK22 4BF

£325,000



### The Property

Forming part of a small select development built in recent years, a spacious three bedroom end mews. Ideal position and convenient for all New Mills amenities, this modern, energy - efficient home is also offered for sale with No Chain. Private gardens with Indian Stone paving, tiered borders, off road parking and an integral garage. Comprising: entrance hall, downstairs wc, open plan living room with French doors, fitted kitchen with integrated appliances, first floor master bedroom with en-suite, two further bedrooms and family bathroom. Pvc double glazing and gas central heating. Viewing highly recommended.




- Three Bedrooms
- Master with En-Suite
- Open Plan Living Room
- Fitted Kitchen with Integrated Appliances
- Integral Garage Providing Parking for Two Cars
- Private Garden
- Gas Central Heating
- PVC Double Glazed Windows

**Postcode** SK22 4BF

**EPC Rating** B

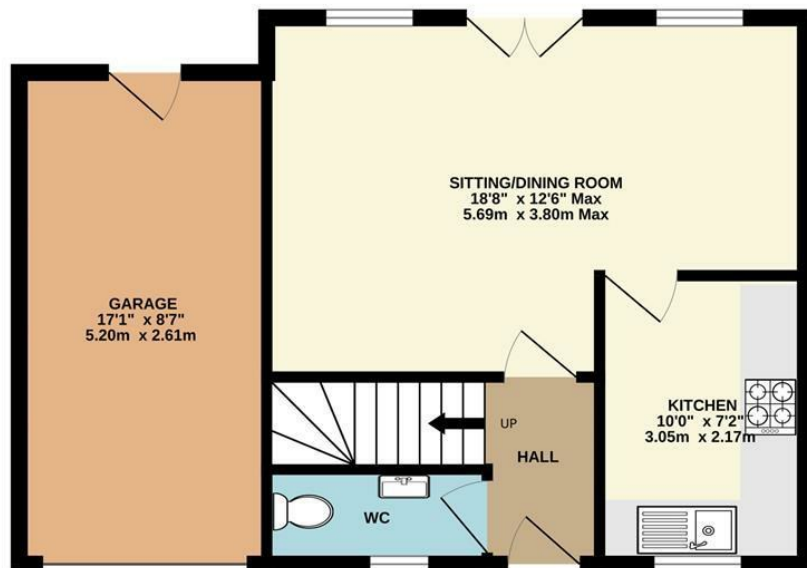
**Local Authority** High Peak

**Council Tax** C

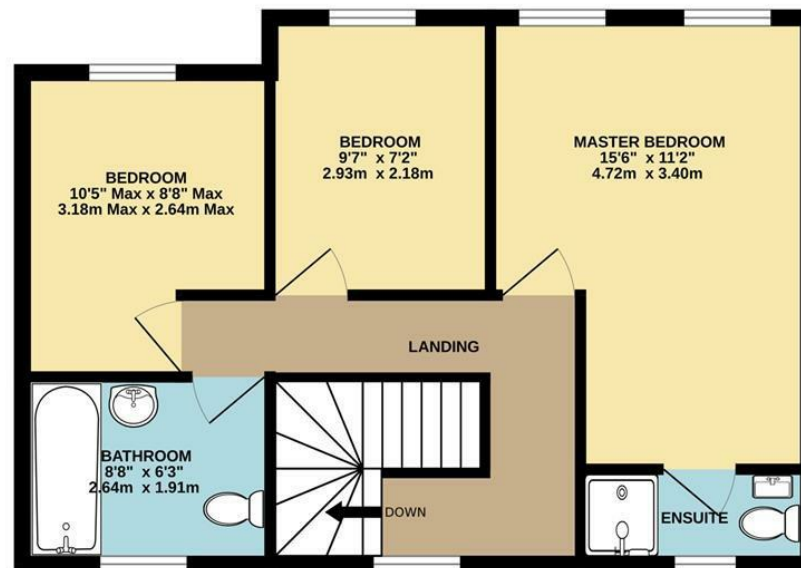
Energy Efficiency Rating		Current	Potential
Very energy efficient - lower running costs			
(92 plus) A			94
(81-91) B		83	
(69-80) C			
(55-68) D			
(39-54) E			
(21-38) F			
(1-20) G			
Not energy efficient - higher running costs			
<b>England &amp; Wales</b>		EU Directive 2002/91/EC 	



GROUND FLOOR



1ST FLOOR



Whilst every attempt has been made to ensure the accuracy of the floorplan contained here, measurements of doors, windows, rooms and any other items are approximate and no responsibility is taken for any error, omission or mis-statement. This plan is for illustrative purposes only and should be used as such by any prospective purchaser. The services, systems and appliances shown have not been tested and no guarantee as to their operability or efficiency can be given.  
Made with Metropix ©2026



These particulars are believed to be accurate but they are not guaranteed and do not form a contract. Neither Jordan Fishwick nor the vendor or lessor accept any responsibility in respect of these particulars, which are not intended to be statements or representations of fact and any intending purchaser or lessee must satisfy himself by inspection or otherwise as to the correctness of each of the statements contained in these particulars. Any floorplans on this brochure are for illustrative purposes only and are not necessarily to scale.

Offices at: Chorlton, Didsbury, Disley, Hale, Glossop, Macclesfield, Manchester Deansgate, Manchester Whitworth Street, New Mills, Sale, Wilmslow and Withington

14 Market St, Disley, Cheshire, Stockport SK12 2AA

01663 767878

disley@jordanfishwick.co.uk  
www.jordanfishwick.co.uk