





47, Coare Street, Cheshire, SK10 1DW

This two-bedroom mid-terrace, situated just a stone's throw from Macclesfield town centre, offers excellent convenience for local amenities, transport links, and shops. The property presents an ideal opportunity for first-time buyers looking to step onto the property ladder, as well as buy-to-let investors seeking a well-located rental asset.

The accommodation briefly comprises a living room, kitchen, and a ground floor bathroom. To the first floor, there are two well-proportioned double bedrooms. Additional features include gas-fired central heating and uPVC double glazing throughout.

To the rear of the property there is a shared courtyard style garden.

Macclesfield is a thriving business centre and market town with excellent local amenities and a choice of modern leisure and sports facilities. The town is situated on the Cheshire Plain, at the edge of the Peak District National Park with its picturesque beauty and extensive walks.

Residents of Macclesfield have access to good transport links including national motorways, major roads and train networks, including the West Coast Line direct to London. Manchester International Airport is only thirteen miles away by road. Greater Manchester is within comfortable daily travelling distance and there are regular bus services to neighbouring towns.

Proceed out of Macclesfield along Beech Lane (A538) towards Tytherington and take the first turning on the left into Coare Street, and the property can be found on the right-hand side.

Viewing: By appointment with Holden and Prescott 01625 422244

Ground Floor

Living Room

11'6 x 10'1

Composite front door with glazing inset. Open fireplace with timber surround and marble hearth. Shelving and meter cupboard to the chimney recess. uPVC double glazed window. Double panelled radiator. Open way through to the kitchen.

Kitchen

11'7 x 8'9

Single drainer stainless steel sink with mixer tap and base unit below. An additional range of base and eye level units with contrasting work surfaces and tiled splashbacks. Electric cooker point with extractor hood over. Plumbing for automatic washing machine. Wall-mounted combination condensing boiler. Understairs storage cupboard with shelving and electricity points. T.V. aerial point. uPVC double glazed window. Double panelled radiator.

Rear Porch/Vestibule

uPVC door with glazing inset opening onto the rear garden.

Bathroom

Panelled bath with mixer tap and Gainsborough electric shower over. Washbasin with mixer tap. Low suite W.C. Partially tiled walls. Extractor fan. uPVC double glazed window. Double panelled radiator.

First Floor

Landing

Handrail to the staircase. Loft access.

Bedroom One

11'7 x 11'1

Shelving to the chimney recess. Ceiling cornice. uPVC double glazed window. Single panelled radiator.

Bedroom Two

11'6 x 8'9

Storage cupboard. uPVC double glazed window. Single panelled radiator.

Outside**Gardens**

To the rear of the property there is a shared courtyard style garden.

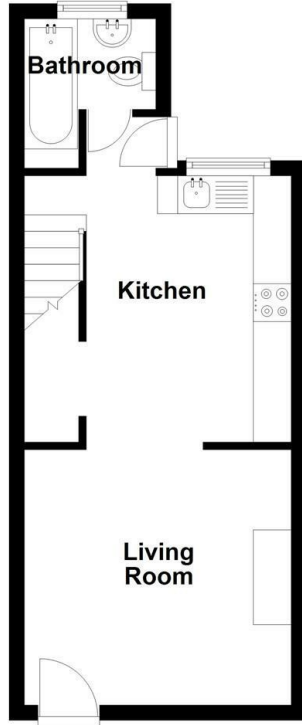
Tenure

Freehold

£147,500

HOLDEN & PRESCOTT

Ground Floor



First Floor

